

For Research Use Only

CLTB Monoclonal antibody

Catalog Number: 66270-1-Ig **1 Publications**



Basic Information

Catalog Number: 66270-1-Ig	GenBank Accession Number: BC006457	Purification Method: Protein G purification
Size: 150ul , Concentration: 1700 ug/ml by Nanodrop and 1320 ug/ml by Bradford method using BSA as the standard;	GeneID (NCBI): 1212	CloneNo.: 1F9C2
Source: Mouse	UNIPROT ID: P09497	Recommended Dilutions: WB 1:500-1:2000 IHC 1:50-1:500 IF/ICC 1:50-1:500
Isotype: IgG1	Full Name: clathrin, light chain (Lcb)	
Immunogen Catalog Number: AG24347	Calculated MW: 23 kDa	
	Observed MW: 32-38 kDa	

Applications

Tested Applications: WB, IHC, IF/ICC, ELISA	Positive Controls:
Cited Applications: WB	WB : pig brain tissue,
Species Specificity: human, pig	IHC : human liver tissue, human kidney tissue
Cited Species: human	IF/ICC : HeLa cells,
Note-IHC: suggested antigen retrieval with TE buffer pH 9.0; (*) Alternatively, antigen retrieval may be performed with citrate buffer pH 6.0	

Background Information

Clathrin is the major protein of the polyhedral coat of coated pits and vesicles which entrap specific macromolecules during receptor-mediated endocytosis. The clathrin molecule has a triskelion shape. Each clathrin triskelion is composed of three identical heavy chains (180 kDa) and three light chains of two types, LCA (CLTA) and LCB (CLTB) (30-40 kDa). The light chain subunits are thought to regulate the formation or disassembly of clathrin coats. (PMID: 2445759; 8374173; 3563513)

Notable Publications

Author	Pubmed ID	Journal	Application
Mengmeng Qin	31938061	Theranostics	WB

Storage

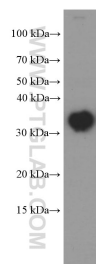
Storage:
Store at -20°C. Stable for one year after shipment.
Storage Buffer:
PBS with 0.02% sodium azide and 50% glycerol pH 7.3.
Aliquoting is unnecessary for -20°C storage

*** 20ul sizes contain 0.1% BSA

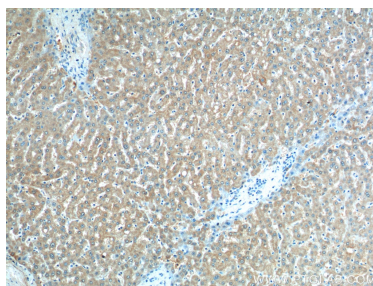
For technical support and original validation data for this product please contact:
T: 1 (888) 4PTGLAB (1-888-478-4522) (toll free in USA), or 1(312) 455-8498 (outside USA)
E: proteintech@ptglab.com
W: ptglab.com

This product is exclusively available under Proteintech Group brand and is not available to purchase from any other manufacturer.

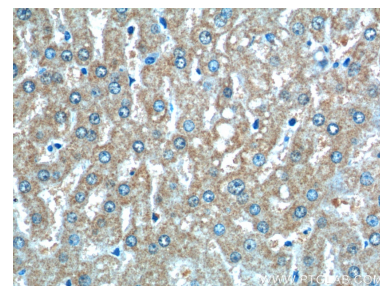
Selected Validation Data



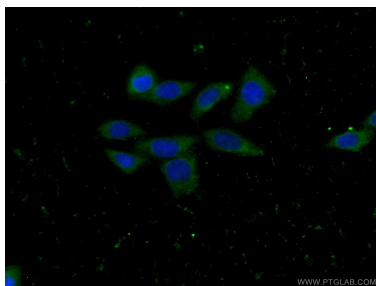
pig brain tissue were subjected to SDS PAGE followed by western blot with 66270-1-Ig (CLTB antibody) at dilution of 1:1000 incubated at room temperature for 1.5 hours.



Immunohistochemical analysis of paraffin-embedded human liver tissue slide using 66270-1-Ig (CLTB Antibody) at dilution of 1:200 (under 10x lens).



Immunohistochemical analysis of paraffin-embedded human liver tissue slide using 66270-1-Ig (CLTB Antibody) at dilution of 1:200 (under 40x lens).



Immunofluorescent analysis of (-20°C Ethanol) fixed HeLa cells using 66270-1-Ig (CLTB antibody) at dilution of 1:100 and Alexa Fluor 488-conjugated Goat Anti-Mouse IgG(H+L).