

For Research Use Only

CLPP Monoclonal antibody

Catalog Number: 66271-1-Ig

Featured Product

4 Publications



Basic Information

Catalog Number:

66271-1-Ig

Size:

150ul, Concentration: 1000 ug/ml by Bradford method using BSA as the standard;

Source:

Mouse

Isotype:

IgG3

Immunogen Catalog Number:

AG8420

GenBank Accession Number:

BC002956

GeneID (NCBI):

8192

UNIPROT ID:

Q16740

Full Name:

ClpP caseinolytic peptidase, ATP-dependent, proteolytic subunit homolog (E. coli)

Calculated MW:

30 kDa

Observed MW:

26 kDa, 30 kDa

Purification Method:

Protein G purification

CloneNo.:

2E1D9

Recommended Dilutions:

WB 1:500-1:2000

IHC 1:100-1:400

Applications

Tested Applications:

WB, IHC, ELISA

Cited Applications:

WB, IF

Species Specificity:

human, pig

Cited Species:

human, mouse

Note-IHC: suggested antigen retrieval with TE buffer pH 9.0; (*) Alternatively, antigen retrieval may be performed with citrate buffer pH 6.0

Positive Controls:

WB : human heart tissue, pig heart tissue

IHC : human heart tissue,

Background Information

CLPP is the putative ATP-dependent Clp protease proteolytic subunit and also named as endopeptidase Clp. It belongs to the peptidase S14 family. Clp cleaves peptides in various proteins in a process that requires ATP hydrolysis. It may be responsible for a fairly general and central housekeeping function rather than for the degradation of specific substrates. This protein has a transit peptide of 56 amino acid.

Notable Publications

| Author | Pubmed ID | Journal | Application |
|---------------------|-----------|---------|-------------|
| Jana Key | 34943861 | Cells | IF |
| GuiJun Wu | 31304066 | PeerJ | WB |
| Vincenzo Sorrentino | 29211722 | Nature | WB |

Storage

Storage:

Store at -20°C. Stable for one year after shipment.

Storage Buffer:

PBS with 0.02% sodium azide and 50% glycerol pH 7.3.

Aliquoting is unnecessary for -20°C storage

*** 20ul sizes contain 0.1% BSA

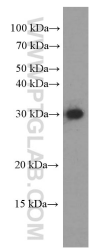
For technical support and original validation data for this product please contact:

T: 1 (888) 4PTGLAB (1-888-478-4522) (toll free in USA), or 1(312) 455-8498 (outside USA)

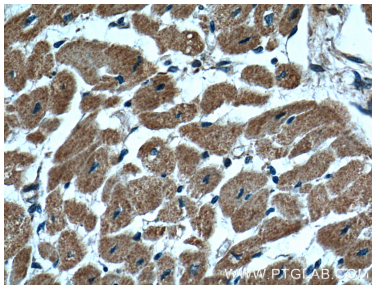
E: proteintech@ptglab.com
W: ptglab.com

This product is exclusively available under Proteintech Group brand and is not available to purchase from any other manufacturer.

Selected Validation Data



human heart tissue were subjected to SDS PAGE followed by western blot with 66271-1-Ig (CLPP Antibody) at dilution of 1:1000 incubated at room temperature for 1.5 hours.



Immunohistochemical analysis of paraffin-embedded human heart tissue slide using 66271-1-Ig (CLPP Antibody) at dilution of 1:200 (under 40x lens).