

For Research Use Only

CLPP Monoclonal antibody, PBS Only



Catalog Number: 66271-1-PBS

Featured Product

Basic Information

Catalog Number:

66271-1-PBS

Size:

100ug, Concentration: 1 mg/ml by Nanodrop;

Source:

Mouse

Isotype:

IgG3

Immunogen Catalog Number:

AG8420

GenBank Accession Number:

BC002956

GeneID (NCBI):

8192

UNIPROT ID:

Q16740

Full Name:

ClpP caseinolytic peptidase, ATP-dependent, proteolytic subunit homolog (E. coli)

Calculated MW:

30 kDa

Observed MW:

26 kDa, 30 kDa

Purification Method:

Protein G purification

CloneNo.:

2E1D9

Applications

Tested Applications:

WB, IHC, Indirect ELISA

Species Specificity:

human, pig

Background Information

CLPP is the putative ATP-dependent Clp protease proteolytic subunit and also named as endopeptidase Clp. It belongs to the peptidase S14 family. Clp cleaves peptides in various proteins in a process that requires ATP hydrolysis. It may be responsible for a fairly general and central housekeeping function rather than for the degradation of specific substrates. This protein has a transit peptide of 56 amino acid.

Storage

Storage:

Store at -80°C.

Storage Buffer:

PBS Only

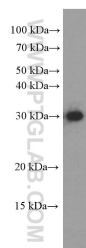
For technical support and original validation data for this product please contact:

T: 1 (888) 4PTGLAB (1-888-478-4522) (toll free in USA), or 1(312) 455-8498 (outside USA)

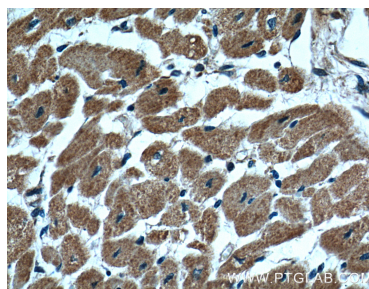
E: proteintech@ptglab.com
W: ptglab.com

This product is exclusively available under Proteintech Group brand and is not available to purchase from any other manufacturer.

Selected Validation Data



human heart tissue were subjected to SDS PAGE followed by western blot with 66271-1-Ig (CLPP Antibody) at dilution of 1:1000 incubated at room temperature for 1.5 hours. This data was developed using the same antibody clone with 66271-1-PBS in a different storage buffer formulation.



Immunohistochemical analysis of paraffin-embedded human heart tissue slide using 66271-1-Ig (CLPP Antibody) at dilution of 1:200 (under 40x lens). This data was developed using the same antibody clone with 66271-1-PBS in a different storage buffer formulation.