

For Research Use Only

ERCC1 Monoclonal antibody

Catalog Number: 66275-1-Ig 1 Publications



Basic Information

Catalog Number: 66275-1-Ig	GenBank Accession Number: BC052813	Purification Method: Protein G purification
Size: 150ul , Concentration: 1000 µg/ml by Bradford method using BSA as the standard;	GeneID (NCBI): 2067	CloneNo.: 1H4D5
Source: Mouse	Full Name: excision repair cross-complementing rodent repair deficiency, complementation group 1 (includes overlapping antisense sequence)	Recommended Dilutions: WB 1:1000-1:4000 IF 1:50-1:500
Isotype: IgG1	Calculated MW: 33 kDa	
Immunogen Catalog Number: AG6417	Observed MW: 38 kDa	

Applications

Tested Applications: IF, WB, ELISA	Positive Controls: WB : A431 cells, IF : A431 cells,
Cited Applications: WB	
Species Specificity: human	
Cited Species: human	

Background Information

Excision Repair Cross Complementing 1 (ERCC1) is a structure-specific endonuclease that is responsible for the 5'-incision during DNA repair. It forms a complex with ERCC11, XPF and ERCC4, which are required in both recombinatorial repair and nucleotide excision repair. It has been found that ERCC1, together with RRM1, are determinants of survival after surgical treatment of early-stage, non-small-cell lung cancer. (Ref: Simon, ER. 2005)

Notable Publications

Author	Pubmed ID	Journal	Application
Bin Zhu	31541631	Biochem Pharmacol	WB

Storage

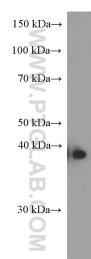
Storage:
Store at -20°C. Stable for one year after shipment.
Storage Buffer:
PBS with 0.02% sodium azide and 50% glycerol pH 7.3.
Aliquoting is unnecessary for -20°C storage

*** 20ul sizes contain 0.1% BSA

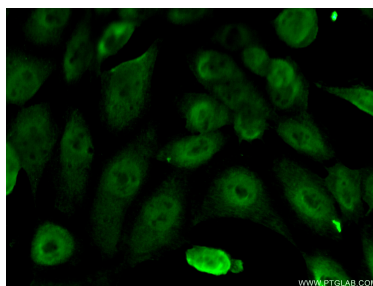
For technical support and original validation data for this product please contact:
T: 1 (888) 4PTGLAB (1-888-478-4522) (toll free in USA), or 1(312) 455-8498 (outside USA)
E: proteintech@ptglab.com
W: ptglab.com

This product is exclusively available under Proteintech Group brand and is not available to purchase from any other manufacturer.

Selected Validation Data



A431 cells were subjected to SDS PAGE followed by western blot with 66275-1-Ig (ERCC1 Antibody) at dilution of 1:2000 incubated at room temperature for 1.5 hours.



Immunofluorescent analysis of (10% Formaldehyde) fixed A431 cells using 66275-1-Ig(ERCC1 antibody) at dilution of 1:50 and Alexa Fluor 488-conjugated AffiniPure Goat Anti-Mouse IgG(H+L).