

For Research Use Only

# ERCC1 Monoclonal antibody, PBS Only



Catalog Number: 66275-1-PBS

## Basic Information

<b>Catalog Number:</b> 66275-1-PBS	<b>GenBank Accession Number:</b> BC052813	<b>Purification Method:</b> Protein G purification
<b>Size:</b> 100ug , Concentration: 1 mg/ml by Nanodrop;	<b>GeneID (NCBI):</b> 2067	<b>CloneNo.:</b> 1H4D5
<b>Source:</b> Mouse	<b>UNIPROT ID:</b> P07992	
<b>Isotype:</b> IgG1	<b>Full Name:</b> excision repair cross-complementing rodent repair deficiency, complementation group 1 (includes overlapping antisense sequence)	
<b>Immunogen Catalog Number:</b> AG6417	<b>Calculated MW:</b> 33 kDa	
	<b>Observed MW:</b> 38 kDa	

## Applications

**Tested Applications:**  
WB, IF, Indirect ELISA

**Species Specificity:**  
human

## Background Information

Excision Repair Cross Complementing 1 (ERCC1) is a structure-specific endonuclease that is responsible for the 5'-incision during DNA repair. It forms a complex with ERCC11, XPF and ERCC4, which are required in both recombinatorial repair and nucleotide excision repair. It has been found that ERCC1, together with RRM1, are determinants of survival after surgical treatment of early-stage, non-small-cell lung cancer. (Ref: Simon, ER. 2005)

## Storage

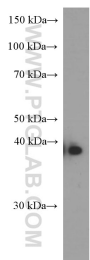
**Storage:**  
Store at -80°C.

**Storage Buffer:**  
PBS Only

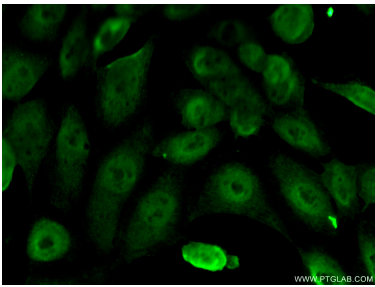
For technical support and original validation data for this product please contact:  
T: 1 (888) 4PTGLAB (1-888-478-4522) (toll free in USA), or 1(312) 455-8498 (outside USA)  
E: [proteintech@ptglab.com](mailto:proteintech@ptglab.com)  
W: [ptglab.com](http://ptglab.com)

This product is exclusively available under Proteintech Group brand and is not available to purchase from any other manufacturer.

## Selected Validation Data



A431 cells were subjected to SDS PAGE followed by western blot with 66275-1-Ig (ERCC1 Antibody) at dilution of 1:2000 incubated at room temperature for 1.5 hours. This data was developed using the same antibody clone with 66275-1-PBS in a different storage buffer formulation.



Immunofluorescent analysis of (10% Formaldehyde ) fixed A431 cells using 66275-1-Ig(ERCC1 antibody) at dilution of 1:50 and Alexa Fluor 488-conjugated AffiniPure Goat Anti-Mouse IgG(H+L). This data was developed using the same antibody clone with 66275-1-PBS in a different storage buffer formulation.