

For Research Use Only

# CAPG Monoclonal antibody

Catalog Number: 66277-1-Ig **Featured Product**



## Basic Information

<b>Catalog Number:</b> 66277-1-Ig	<b>GenBank Accession Number:</b> BC000728	<b>Purification Method:</b> Protein G purification
<b>Size:</b> 150ul , Concentration: 1600 µg/ml by Nanodrop and 1000 µg/ml by Bradford method using BSA as the standard;	<b>GeneID (NCBI):</b> 822	<b>CloneNo.:</b> 3A5B2
<b>Source:</b> Mouse	<b>Full Name:</b> capping protein (actin filament), gelsolin-like	<b>Recommended Dilutions:</b> WB 1:500-1:2000 IHC 1:50-1:500 IF 1:50-1:500
<b>Isotype:</b> IgG1	<b>Calculated MW:</b> 39 kDa	
<b>Immunogen Catalog Number:</b> AG24676	<b>Observed MW:</b> 39-40 kDa	

## Applications

<b>Tested Applications:</b> IF, IHC, WB, ELISA	<b>Positive Controls:</b>
<b>Species Specificity:</b> human	<b>WB :</b> Jurkat cells, HeLa cells, HL-60 cells
<b>Note-IHC: suggested antigen retrieval with TE buffer pH 9.0; (*) Alternatively, antigen retrieval may be performed with citrate buffer pH 6.0</b>	<b>IHC :</b> human lung cancer tissue, <b>IF :</b> HeLa cells,

## Background Information

CapG (gelsolin-like actin-capping protein) is a member of the gelsolin superfamily proteins, which regulates actin filament length by capping or severing filaments. Studies have shown a role for CapG in regulating cell motility. The expression of CapG is upregulated under hypoxia and in turn increases the motility of cells. Recently it has been reported that the overexpression of CapG is associated with the progression of lung adenocarcinoma as well as lymphatic invasion status of cholangiocarcinoma, which may be used for prognosis of these tumors. (21908955,22155129)

## Storage

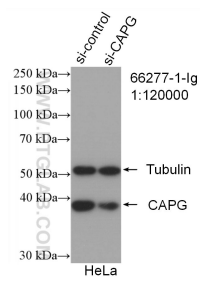
**Storage:**  
Store at -20°C. Stable for one year after shipment.  
**Storage Buffer:**  
PBS with 0.02% sodium azide and 50% glycerol pH 7.3.  
**Aliquoting is unnecessary for -20°C storage**

**\*\*\* 20ul sizes contain 0.1% BSA**

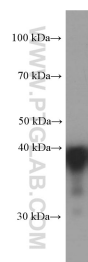
For technical support and original validation data for this product please contact:  
T: 1 (888) 4PTGLAB (1-888-478-4522) (toll free in USA), or 1(312) 455-8498 (outside USA) E: proteintech@ptglab.com W: ptglab.com

**This product is exclusively available under Proteintech Group brand and is not available to purchase from any other manufacturer.**

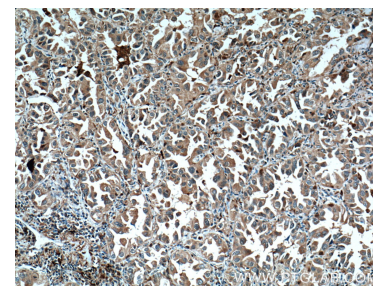
## Selected Validation Data



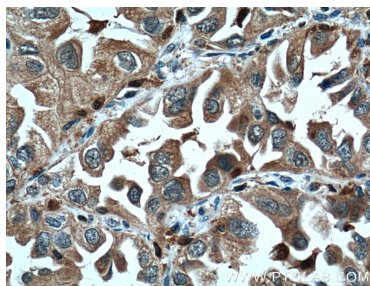
WB result of CAPG antibody (66277-1-Ig; 1:120000); incubated at room temperature for 1.5 hours) with sh-Control and sh-CAPG transfected HeLa cells.



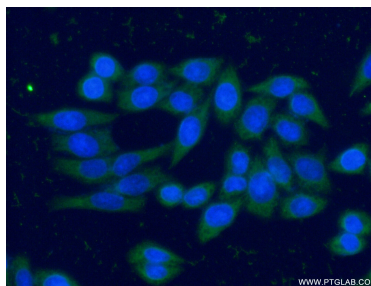
Jurkat cells were subjected to SDS PAGE followed by western blot with 66277-1-Ig (CAPG Antibody) at dilution of 1:1000 incubated at room temperature for 1.5 hours.



Immunohistochemical analysis of paraffin-embedded human lung cancer tissue slide using 66277-1-Ig (CAPG Antibody) at dilution of 1:200 (under 10x lens). Heat mediated antigen retrieval with Tris-EDTA buffer (pH 9.0).



Immunohistochemical analysis of paraffin-embedded human lung cancer tissue slide using 66277-1-Ig (CAPG Antibody) at dilution of 1:200 (under 40x lens). Heat mediated antigen retrieval with Tris-EDTA buffer (pH 9.0).



Immunofluorescent analysis of (-20°C Ethanol ) fixed HeLa cells using 66277-1-Ig(CAPG antibody) at dilution of 1:100 and Alexa Fluor 488-conjugated AffiniPure Goat Anti-Mouse IgG(H+L).