

For Research Use Only

ZEB1 Monoclonal antibody

Catalog Number: 66279-1-Ig 10 Publications



Basic Information

Catalog Number: 66279-1-Ig	GenBank Accession Number: BC112392	Purification Method: Protein A purification
Size: 150ul , Concentration: 1500 ug/ml by Nanodrop and 1000 ug/ml by Bradford method using BSA as the standard;	GeneID (NCBI): 6935	CloneNo.: 1H1F1
Source: Mouse	UNIPROT ID: P37275	Recommended Dilutions: WB 1:1000-1:8000 IHC 1:200-1:800
Isotype: IgG1	Full Name: zinc finger E-box binding homeobox 1	
Immunogen Catalog Number: AG17118	Calculated MW: 1125 aa, 124 kDa	
	Observed MW: 190-210 kDa	

Applications

Tested Applications: WB, IHC, ELISA	Positive Controls:
Cited Applications: WB, IF	WB : HEK-293 cells, HeLa cells, Jurkat cells, SKOV-3 cells, HepG2 cells
Species Specificity: human	IHC : human colon cancer tissue, human lung cancer tissue
Cited Species: human, mouse	
Note-IHC: suggested antigen retrieval with TE buffer pH 9.0; (*) Alternatively, antigen retrieval may be performed with citrate buffer pH 6.0	

Background Information

ZEB1(zinc-finger-enhancer binding protein 1), which is a members of the Zincfinger-Homeobox (ZFH)-family of repressors, acts as a transcriptional repressor that inhibits interleukin-2 (IL-2) gene expression. Depending on the quantity of cDNA and on the cell type, ZEB1 can enhance or repress the promoter activity of the ATP1A1 gene . Represses E-cadherin promoter and induces an epithelial-mesenchymal transition (EMT) by recruiting SMARCA4/BRG1. Represses BCL6 transcription in the presence of the corepressor CTBP1. Positively regulates neuronal differentiation. The calculated molecular weight of ZEB1 is 124 kDa, but the post phosphorylation of protein is about 190-210 kDa.

Notable Publications

Author	Pubmed ID	Journal	Application
Shaling Li	36169092	Cancer Sci	WB
Yingzi Zhang	33569740	Breast Cancer	WB
Teng Wang	32860837	Biochim Biophys Acta Mol Cell Res	WB

Storage

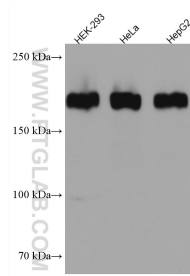
Storage:
Store at -20°C. Stable for one year after shipment.
Storage Buffer:
PBS with 0.02% sodium azide and 50% glycerol, pH7.3
Aliquoting is unnecessary for -20°C storage

*** 20ul sizes contain 0.1% BSA

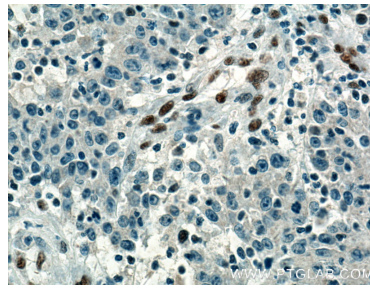
For technical support and original validation data for this product please contact:
T: 1 (888) 4PTGLAB (1-888-478-4522) (toll free in USA), or 1(312) 455-8498 (outside USA)
E: proteintech@ptglab.com
W: ptglab.com

This product is exclusively available under Proteintech Group brand and is not available to purchase from any other manufacturer.

Selected Validation Data



Various lysates were subjected to SDS PAGE followed by western blot with 66279-1-Ig (ZEB1 antibody) at dilution of 1:4000 incubated at room temperature for 1.5 hours.



Immunohistochemical analysis of paraffin-embedded human colon cancer tissue slide using 66279-1-Ig (ZEB1 Antibody) at dilution of 1:400 (under 40x lens). Heat mediated antigen retrieval with Tris-EDTA buffer (pH 9.0).