

For Research Use Only

# ZEB1 Monoclonal antibody, PBS Only

Catalog Number: 66279-1-PBS



## Basic Information

<b>Catalog Number:</b> 66279-1-PBS	<b>GenBank Accession Number:</b> BC112392	<b>Purification Method:</b> Protein A purification
<b>Size:</b> 100ug , Concentration: 1mg/ml by Nanodrop;	<b>GeneID (NCBI):</b> 6935	<b>CloneNo.:</b> 1H1F1
<b>Source:</b> Mouse	<b>UNIPROT ID:</b> P37275	
<b>Isotype:</b> IgG1	<b>Full Name:</b> zinc finger E-box binding homeobox 1	
<b>Immunogen Catalog Number:</b> AG17118	<b>Calculated MW:</b> 1125 aa, 124 kDa	
	<b>Observed MW:</b> 190-210 kDa	

## Applications

**Tested Applications:**  
WB, IHC, ELISA

**Species Specificity:**  
human

## Background Information

ZEB1(zinc-finger-enhancer binding protein 1), which is a member of the Zinc finger-Homeobox (ZFH) family of repressors, acts as a transcriptional repressor that inhibits interleukin-2 (IL-2) gene expression. Depending on the quantity of cDNA and on the cell type, ZEB1 can enhance or repress the promoter activity of the ATP1A1 gene. Represses E-cadherin promoter and induces an epithelial-mesenchymal transition (EMT) by recruiting SMARCA4/BRG1. Represses BCL6 transcription in the presence of the corepressor CTBP1. Positively regulates neuronal differentiation. The calculated molecular weight of ZEB1 is 124 kDa, but the post-phosphorylation of protein is about 190-210 kDa.

## Storage

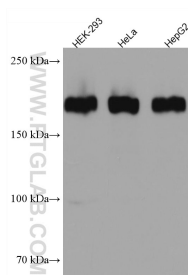
**Storage:**  
Store at -80°C.

**Storage Buffer:**  
PBS only, pH7.3

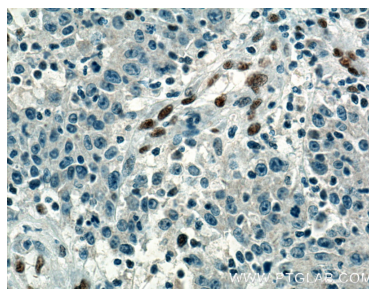
For technical support and original validation data for this product please contact:  
T: 1 (888) 4PTGLAB (1-888-478-4522) (toll free in USA), or 1(312) 455-8498 (outside USA)  
E: [proteintech@ptglab.com](mailto:proteintech@ptglab.com)  
W: [ptglab.com](http://ptglab.com)

This product is exclusively available under Proteintech Group brand and is not available to purchase from any other manufacturer.

## Selected Validation Data



Various lysates were subjected to SDS PAGE followed by western blot with 66279-1-Ig (ZEB1 antibody) at dilution of 1:4000 incubated at room temperature for 1.5 hours. This data was developed using the same antibody clone with 66279-1-PBS in a different storage buffer formulation.



Immunohistochemical analysis of paraffin-embedded human colon cancer tissue slide using 66279-1-Ig (ZEB1 Antibody) at dilution of 1:400 (under 40x lens). Heat mediated antigen retrieval with Tris-EDTA buffer (pH 9.0). This data was developed using the same antibody clone with 66279-1-PBS in a different storage buffer formulation.