

For Research Use Only

# OGDH Monoclonal antibody

Catalog Number: 66285-1-Ig **3 Publications**



## Basic Information

<b>Catalog Number:</b> 66285-1-Ig	<b>GenBank Accession Number:</b> BC004964	<b>Purification Method:</b> Protein A purification
<b>Size:</b> 150ul , Concentration: 1300 ug/ml by Nanodrop and 1000 ug/ml by Bradford method using BSA as the standard;	<b>GeneID (NCBI):</b> 4967	<b>CloneNo.:</b> 1H7A2
<b>Source:</b> Mouse	<b>UNIPROT ID:</b> Q02218	<b>Recommended Dilutions:</b> WB 1:1000-1:5000 IHC 1:50-1:500 IF/ICC 1:200-1:800
<b>Isotype:</b> IgG2b	<b>Full Name:</b> oxoglutarate (alpha-ketoglutarate) dehydrogenase (lipoamide)	
<b>Immunogen Catalog Number:</b> AG7484	<b>Calculated MW:</b> 116 kDa	
	<b>Observed MW:</b> 116 kDa	

## Applications

<b>Tested Applications:</b> WB, IHC, IF/ICC, ELISA	<b>Positive Controls:</b>
<b>Cited Applications:</b> WB, IHC	<b>WB :</b> human heart tissue, ROS1728 cells
<b>Species Specificity:</b> human, rat	<b>IHC :</b> human lung cancer tissue,
<b>Cited Species:</b> human, mouse	<b>IF/ICC :</b> HepG2 cells,
<b>Note-IHC: suggested antigen retrieval with TE buffer pH 9.0; (*) Alternatively, antigen retrieval may be performed with citrate buffer pH 6.0</b>	

## Background Information

OGDH(2-oxoglutarate dehydrogenase, mitochondrial) is also named as OGDC-E1 and belongs to the alpha-ketoglutarate dehydrogenase family. It is one of the three enzymatic components of 2-oxoglutarate dehydrogenase complex, which catalyzes the overall conversion of 2-oxoglutarate to succinyl-CoA and CO<sub>2</sub>. This protein has 3 isoforms produced by alternative splicing.

## Notable Publications

Author	Pubmed ID	Journal	Application
Simone Kumstel	35452495	PLoS One	IHC
Yu Shi	39223390	Nat Cardiovasc Res	WB
João Leandro	32160276	Hum Mol Genet	WB

## Storage

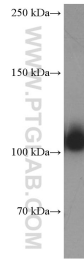
**Storage:**  
Store at -20°C. Stable for one year after shipment.  
**Storage Buffer:**  
PBS with 0.02% sodium azide and 50% glycerol pH 7.3.  
Aliquoting is unnecessary for -20°C storage

\*\*\* 20ul sizes contain 0.1% BSA

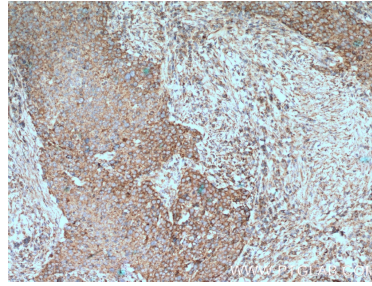
For technical support and original validation data for this product please contact:  
T: 1 (888) 4PTGLAB (1-888-478-4522) (toll free in USA), or 1(312) 455-8498 (outside USA)  
E: [proteintech@ptglab.com](mailto:proteintech@ptglab.com)  
W: [ptglab.com](http://ptglab.com)

This product is exclusively available under Proteintech Group brand and is not available to purchase from any other manufacturer.

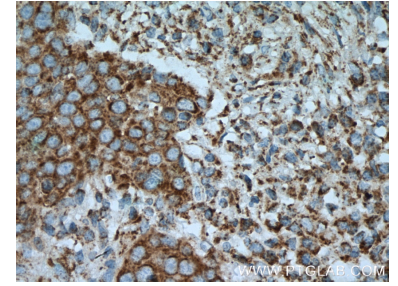
## Selected Validation Data



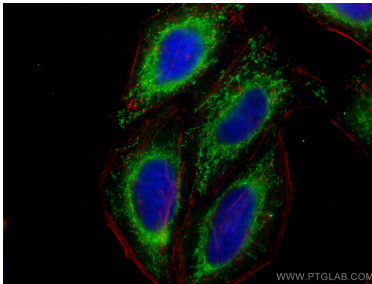
human heart tissue were subjected to SDS PAGE followed by western blot with 66285-1-Ig (OGDH Antibody) at dilution of 1:2500 incubated at room temperature for 1.5 hours.



Immunohistochemical analysis of paraffin-embedded human lung cancer tissue slide using 66285-1-Ig (OGDH Antibody) at dilution of 1:200 (under 10x lens). Heat mediated antigen retrieval with Tris-EDTA buffer (pH 9.0).



Immunohistochemical analysis of paraffin-embedded human lung cancer tissue slide using 66285-1-Ig (OGDH Antibody) at dilution of 1:200 (under 40x lens). Heat mediated antigen retrieval with Tris-EDTA buffer (pH 9.0).



Immunofluorescent analysis of (-20°C Ethanol) fixed HepG2 cells using OGDH antibody (66285-1-Ig, Clone: 1H7A2 ) at dilution of 1:400 and CoraLite®488-Conjugated Goat Anti-Mouse IgG(H+L) (SA00013-1), CL594-phalloidin (red).