

For Research Use Only

# Pan Acetylation Monoclonal antibody

Catalog Number: 66289-1-Ig **49 Publications**



## Basic Information

**Catalog Number:** 66289-1-Ig  
**Size:** 150ul, Concentration: 1700 ug/ml by Nanodrop and 1000 ug/ml by Bradford method using BSA as the standard;  
**Source:** Mouse  
**Isotype:** IgG1

**GenBank Accession Number:**  
**GeneID (NCBI):**  
**Full Name:**  
**Observed MW:** 17 kDa

**Purification Method:** Protein G purification  
**CloneNo.:** 1D5F2  
**Recommended Dilutions:**  
WB: 1:500-1:3000  
IF/ICC: 1:50-1:500

## Applications

**Tested Applications:** WB, IF/ICC, ELISA  
**Cited Applications:** WB, IHC, IF, IP, CoIP, Acetylation assay  
**Species Specificity:** chemical compound  
**Cited Species:** human, mouse, rat, drosophila, rice

**Positive Controls:**  
WB : HeLa cells,  
IF/ICC : HeLa cells, MDCK cells

## Background Information

Acetylation and De-acetylation are the important reaction in epigenetic. Many proteins, especially Histone, are with Acetylated of Lysine. This antibody is used to detect the Acetylation of Lysine. The 17 kDa in our detection is Acetylated Histone.

## Notable Publications

Author	Pubmed ID	Journal	Application
Yan Yan	28966044	Dev Cell	WB
Qin Zhang	34772407	J Transl Med	CoIP
Guanyu Yang	34780751	Eur J Pharmacol	WB

## Storage

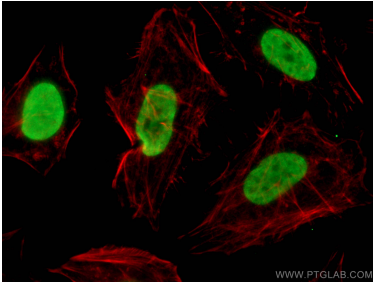
**Storage:** Store at -20°C. Stable for one year after shipment.  
**Storage Buffer:** PBS with 0.02% sodium azide and 50% glycerol, pH7.3  
Aliquoting is unnecessary for -20°C storage

\*\*\* 20ul sizes contain 0.1% BSA

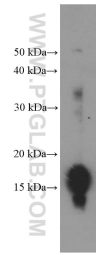
For technical support and original validation data for this product please contact:  
T: 1 (888) 4PTGLAB (1-888-478-4522) (toll free in USA), or 1(312) 455-8498 (outside USA)  
E: proteintech@ptglab.com  
W: ptglab.com

This product is exclusively available under Proteintech Group brand and is not available to purchase from any other manufacturer.

## Selected Validation Data



Immunofluorescent analysis of (4% PFA) fixed HeLa cells using 66289-1-Ig (Pan Acetylation antibody), at dilution of 1:200 and CoraLite®488-Conjugated AffiniPure Goat Anti-Mouse IgG(H+L).



HeLa cells were subjected to SDS PAGE followed by western blot with 66289-1-Ig (Pan Acetylation Antibody) at dilution of 1:1500 incubated at room temperature for 1.5 hours.