

For Research Use Only

Progesterone Receptor Monoclonal antibody

Catalog Number: 66300-1-Ig **2 Publications**



Basic Information

Catalog Number: 66300-1-Ig	GenBank Accession Number: NM_000926	Purification Method: Protein A purification
Size: 150ul , Concentration: 1100 ug/ml by Nanodrop and 1000 ug/ml by Bradford method using BSA as the standard;	GeneID (NCBI): 5241	CloneNo.: 3D1D12
Source: Mouse	UNIPROT ID: P06401	Recommended Dilutions: IHC 1:5000-1:15000
Isotype: IgG1	Full Name: progesterone receptor	
Immunogen Catalog Number: AG22992	Calculated MW: 933 aa, 99 kDa	

Applications

Tested Applications: IHC, ELISA	Positive Controls: IHC : human breast cancer tissue,
Cited Applications: IHC	
Species Specificity: human	
Cited Species: human	
Note-IHC: suggested antigen retrieval with TE buffer pH 9.0; (*) Alternatively, antigen retrieval may be performed with citrate buffer pH 6.0	

Background Information

PGR (Progesterone Receptor), also named as NR3C3 and PR, belongs to the nuclear hormone receptor family and NR3 subfamily. The steroid hormones and their receptors are involved in the regulation of eukaryotic gene expression and affect cellular proliferation and differentiation in target tissues. Progesterone receptor isoform B (PRB) is involved activation of c-SRC/MAPK signaling on hormone stimulation. The ER and PR status has been used as a predictor of breast carcinoma responsiveness to endocrine therapy and as a prognostic indicator for early recurrence.

Notable Publications

Author	Pubmed ID	Journal	Application
Dan Shu	36194178	Ann Med	IHC
Jiaojiao Wang	28765906	Mol Med Rep	IHC

Storage

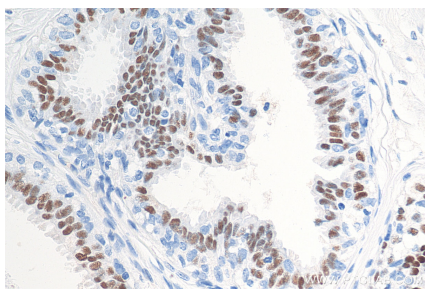
Storage:
Store at -20°C. Stable for one year after shipment.
Storage Buffer:
PBS with 0.02% sodium azide and 50% glycerol pH 7.3.
Aliquoting is unnecessary for -20°C storage

*** 20ul sizes contain 0.1% BSA

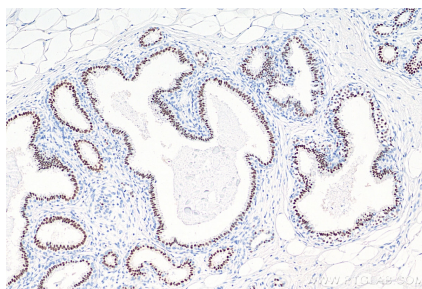
For technical support and original validation data for this product please contact:
T: 1 (888) 4PTGLAB (1-888-478-4522) (toll free in USA), or 1(312) 455-8498 (outside USA)
E: proteintech@ptglab.com
W: ptglab.com

This product is exclusively available under Proteintech Group brand and is not available to purchase from any other manufacturer.

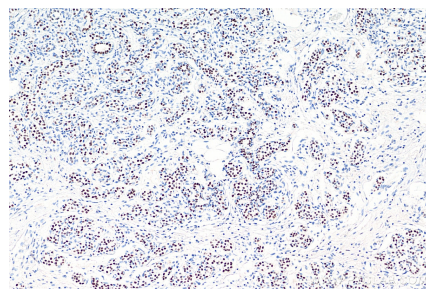
Selected Validation Data



Immunohistochemical analysis of paraffin-embedded human breast cancer tissue slide using 66300-1-Ig (Progesterone Receptor antibody) at dilution of 1:9900 (under 40x lens). Heat mediated antigen retrieval with Tris-EDTA buffer (pH 9.0).



Immunohistochemical analysis of paraffin-embedded human breast cancer tissue slide using 66300-1-Ig (Progesterone Receptor antibody) at dilution of 1:9900 (under 10x lens). Heat mediated antigen retrieval with Tris-EDTA buffer (pH 9.0).



Immunohistochemical analysis of paraffin-embedded human breast cancer tissue slide using 66300-1-Ig (Progesterone Receptor antibody) at dilution of 1:10000 (under 10x lens). Heat mediated antigen retrieval with Tris-EDTA buffer (pH 9.0).