

For Research Use Only

Progesterone Receptor Monoclonal antibody, PBS Only

Catalog Number: 66300-1-PBS



Basic Information

Catalog Number: 66300-1-PBS	GenBank Accession Number: NM_000926	Purification Method: Protein A purification
Size: 100ug , Concentration: 1mg/ml by Nanodrop;	GeneID (NCBI): 5241	CloneNo.: 3D1D12
Source: Mouse	UNIPROT ID: P06401	
Isotype: IgG1	Full Name: progesterone receptor	
Immunogen Catalog Number: AG22992	Calculated MW: 933 aa, 99 kDa	

Applications

Tested Applications:
IHC, ELISA

Species Specificity:
human

Background Information

PGR (Progesterone Receptor), also named as NR3C3 and PR, belongs to the nuclear hormone receptor family and NR3 subfamily. The steroid hormones and their receptors are involved in the regulation of eukaryotic gene expression and affect cellular proliferation and differentiation in target tissues. Progesterone receptor isoform B (PRB) is involved activation of c-SRC/MAPK signaling on hormone stimulation. The ER and PR status has been used as a predictor of breast carcinoma responsiveness to endocrine therapy and as a prognostic indicator for early recurrence.

Storage

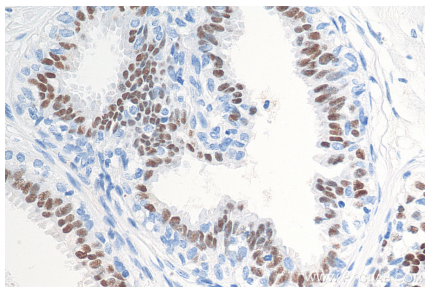
Storage:
Store at -80°C.

Storage Buffer:
PBS Only

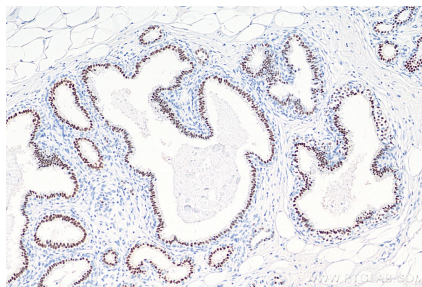
For technical support and original validation data for this product please contact:
T: 1 (888) 4PTGLAB (1-888-478-4522) (toll free in USA), or 1(312) 455-8498 (outside USA)
E: proteintech@ptglab.com
W: ptglab.com

This product is exclusively available under Proteintech Group brand and is not available to purchase from any other manufacturer.

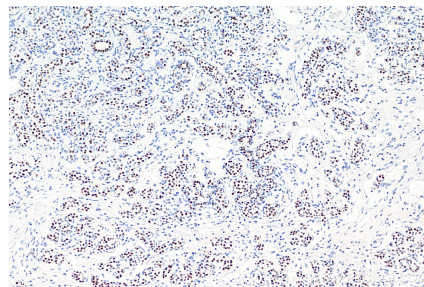
Selected Validation Data



Immunohistochemical analysis of paraffin-embedded human breast cancer tissue slide using 66300-1-Ig (Progesterone Receptor antibody) at dilution of 1:9900 (under 40x lens). Heat mediated antigen retrieval with Tris-EDTA buffer (pH 9.0). This data was developed using the same antibody clone with 66300-1-PBS in a different storage buffer formulation.



Immunohistochemical analysis of paraffin-embedded human breast cancer tissue slide using 66300-1-Ig (Progesterone Receptor antibody) at dilution of 1:9900 (under 10x lens). Heat mediated antigen retrieval with Tris-EDTA buffer (pH 9.0). This data was developed using the same antibody clone with 66300-1-PBS in a different storage buffer formulation.



Immunohistochemical analysis of paraffin-embedded human breast cancer tissue slide using 66300-1-Ig (Progesterone Receptor antibody) at dilution of 1:10000 (under 10x lens). Heat mediated antigen retrieval with Tris-EDTA buffer (pH 9.0). This data was developed using the same antibody clone with 66300-1-PBS in a different storage buffer formulation.