

For Research Use Only

CD107b / LAMP2 Monoclonal antibody

Catalog Number: 66301-1-Ig

Featured Product

116 Publications



Basic Information

Catalog Number:

66301-1-Ig

Size:

150ul, Concentration: 2067 ug/ml by Nanodrop and 2000 ug/ml by Bradford method using BSA as the standard;

Source:

Mouse

Isotype:

IgA

Immunogen Catalog Number:

AG0595

GenBank Accession Number:

BC002965

GeneID (NCBI):

3920

ENSEMBL Gene ID:

ENSG00000005893

UNIPROT ID:

P13473

Full Name:

lysosomal-associated membrane protein 2

Calculated MW:

45 kDa

Observed MW:

120 kDa

Purification Method:

Thiophilic affinity chromatograph

CloneNo.:

2D3B9

Recommended Dilutions:

WB 1:1000-1:4000

IHC 1:500-1:2000

Applications

Tested Applications:

WB, IHC, ELISA

Cited Applications:

WB, IHC, IP, ColP

Species Specificity:

human, mouse, pig

Cited Species:

human, mouse, pig, chicken, bovine

Note-IHC: suggested antigen retrieval with TE buffer pH 9.0; (*) Alternatively, antigen retrieval may be performed with citrate buffer pH 6.0

Positive Controls:

WB: L02 cells, pig liver tissue, mouse liver tissue, HEK-293 cells, HUVEC cells, Jurkat cells, HeLa cells, HepG2 cells

IHC: human liver cancer tissue, mouse liver tissue, human lung cancer tissue, human liver tissue, human kidney tissue

Background Information

Lysosomal-associated membrane protein 2 (LAMP2, synonyms: LAMPB, CD107b) is a member of a family of membrane glycoproteins. This glycoprotein provides selectins with carbohydrate ligands. LAMP2 may play a role in tumor cell metastasis. It may also function in the protection, maintenance, and adhesion of the lysosome. Prior to posttranslational modification, LAMP2 is a ~45 kDa polypeptide. Mature, functional LAMP2 is extensively glycosylated with a variety of different N-linked and O-linked oligosaccharides.

Notable Publications

Author	Pubmed ID	Journal	Application
Xin Xu	36178722	Environ Toxicol	IF
Qi Song	36183948	J Ethnopharmacol	WB
Yang Yang	32962728	J Exp Clin Cancer Res	WB

Storage

Storage:

Store at -20°C. Stable for one year after shipment.

Storage Buffer:

PBS with 0.02% sodium azide and 50% glycerol pH 7.3.

Aliquoting is unnecessary for -20°C storage

*** 20ul sizes contain 0.1% BSA

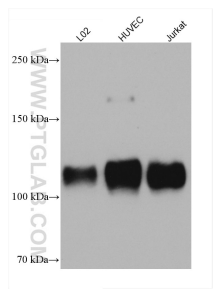
For technical support and original validation data for this product please contact:

T: 1 (888) 4PTGLAB (1-888-478-4522) (toll free in USA), or 1(312) 455-8498 (outside USA)

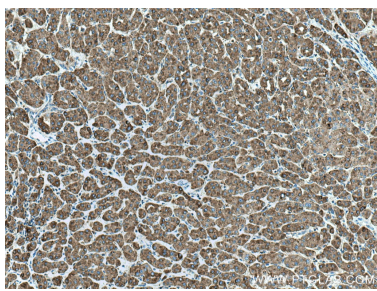
E: proteintech@ptglab.com
W: ptglab.com

This product is exclusively available under Proteintech Group brand and is not available to purchase from any other manufacturer.

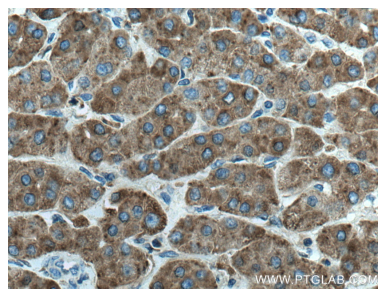
Selected Validation Data



Various lysates were subjected to SDS PAGE followed by western blot with 66301-1-Ig (LAMP2 antibody) at dilution of 1:2000 incubated at room temperature for 1.5 hours.



Immunohistochemical analysis of paraffin-embedded human liver cancer tissue slide using 66301-1-Ig (LAMP2 antibody) at dilution of 1:1000 (under 10x lens). Heat mediated antigen retrieval with Tris-EDTA buffer (pH 9.0).



Immunohistochemical analysis of paraffin-embedded human liver cancer tissue slide using 66301-1-Ig (LAMP2 antibody) at dilution of 1:1000 (under 40x lens). Heat mediated antigen retrieval with Tris-EDTA buffer (pH 9.0).