

For Research Use Only

CHCHD2 Monoclonal antibody

Catalog Number: 66302-1-Ig

Featured Product

10 Publications



Basic Information

Catalog Number:

66302-1-Ig

Size:

150ul, Concentration: 1000 ug/ml by Bradford method using BSA as the standard;

Source:

Mouse

Isotype:

IgG1

Immunogen Catalog Number:

AG24219

GenBank Accession Number:

BC003079

GeneID (NCBI):

51142

UNIPROT ID:

Q9Y6H1

Full Name:

coiled-coil-helix-coiled-coil-helix domain containing 2

Calculated MW:

151 aa, 16 kDa

Observed MW:

17 kDa

Purification Method:

Protein A purification

CloneNo.:

2G1G10

Recommended Dilutions:

WB 1:5000-1:50000

IHC 1:50-1:500

IF/ICC 1:1500-1:6000

Applications

Tested Applications:

WB, IHC, IF/ICC, ELISA

Cited Applications:

WB, IHC, IF

Species Specificity:

human, pig, rat

Cited Species:

human, mouse

Note-IHC: suggested antigen retrieval with TE buffer pH 9.0; (*) Alternatively, antigen retrieval may be performed with citrate buffer pH 6.0

Positive Controls:

WB : HEK-293 cells, rat liver tissue, LNCaP cells, HeLa cells, Jurkat cells, K-562 cells, L02 cells, SMMC-7721 cells, pig liver tissue

IHC : human liver cancer tissue,

IF/ICC : HepG2 cells,

Background Information

CHCHD2 is a widely expressed 16.7-kDa mitochondrion-localized protein. CHCHD2 contains a C-terminal CHCH (coiled-coil helix coiled-coil helix) domain. Mutations in CHCHD2 gene have been reported in autosomal dominant Parkinson's disease (ADPD). CHCHD2 is a bi-organellar mediator of oxidative phosphorylation, playing crucial roles in regulating electron flow in the mitochondrial electron transport chain and acting as a nuclear transcription factor for a cytochrome c oxidase subunit (COX4l2) and itself in response to hypoxic stress. CHCHD2 also regulates cell migration and differentiation, mitochondrial cristae structure, and apoptosis (PMID: 33967741).

Notable Publications

Author	Pubmed ID	Journal	Application
Ryan Houston	34495738	Mol Biol Cell	IHC
Siddhesh Aras	33257573	Proc Natl Acad Sci U S A	WB
Xiaodan Liu	33685516	Acta Neuropathol Commun	IHC,IF,WB

Storage

Storage:

Store at -20°C. Stable for one year after shipment.

Storage Buffer:

PBS with 0.02% sodium azide and 50% glycerol pH 7.3.

Aliquoting is unnecessary for -20°C storage

*** 20ul sizes contain 0.1% BSA

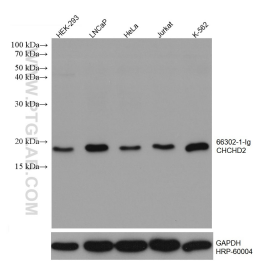
For technical support and original validation data for this product please contact:

T: 1 (888) 4PTGLAB (1-888-478-4522) (toll free in USA), or 1(312) 455-8498 (outside USA)

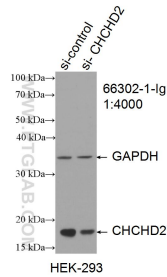
E: proteintech@ptglab.com
W: ptglab.com

This product is exclusively available under Proteintech Group brand and is not available to purchase from any other manufacturer.

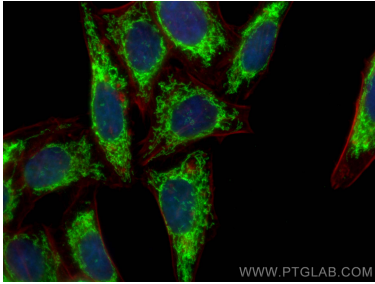
Selected Validation Data



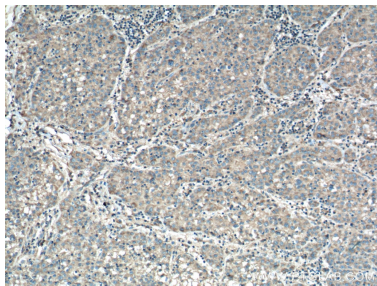
Various lysates were subjected to SDS PAGE followed by western blot with 66302-1-Ig (CHCHD2 antibody) at dilution of 1:10000 incubated at room temperature for 1.5 hours. The membrane was stripped and reblotted with HRP-conjugated GAPDH Monoclonal antibody (HRP-60004) as loading control.



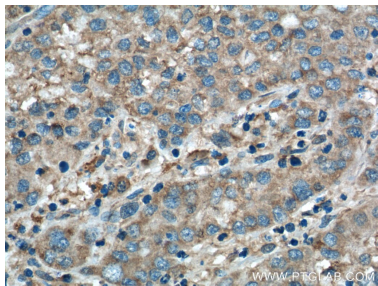
WB result of CHCHD2 antibody (66302-1-Ig; 1:4000; incubated at room temperature for 1.5 hours) with sh-Control and sh-CHCHD2 transfected HEK-293 cells.



Immunofluorescent analysis of (4% PFA) fixed HepG2 cells using CHCHD2 antibody (66302-1-Ig, Clone: 2G1G10) at dilution of 1:3000 and CoraLite®488-Conjugated Goat Anti-Mouse IgG(H+L), CL594-Phalloidin (red).



Immunohistochemical analysis of paraffin-embedded human liver cancer tissue slide using 66302-1-Ig (CHCHD2 Antibody) at dilution of 1:200 (under 10x lens). Heat mediated antigen retrieval with Tris-EDTA buffer (pH 9.0).



Immunohistochemical analysis of paraffin-embedded human liver cancer tissue slide using 66302-1-Ig (CHCHD2 Antibody) at dilution of 1:200 (under 40x lens). Heat mediated antigen retrieval with Tris-EDTA buffer (pH 9.0).