

For Research Use Only

LIPH Monoclonal antibody

Catalog Number: 66303-1-Ig **1 Publications**



Basic Information

Catalog Number: 66303-1-Ig	GenBank Accession Number: BC064941	Purification Method: Protein A purification
Size: 150ul , Concentration: 4900 µg/ml by Nanodrop and 2000 µg/ml by Bradford method using BSA as the standard;	GeneID (NCBI): 200879	CloneNo.: 1F5D10
Source: Mouse	Full Name: Lipase, member H	Recommended Dilutions: WB 1:1000-1:4000 IHC 1:50-1:500 IF 1:50-1:500
Isotype: IgG2a	Calculated MW: 51 kDa	
Immunogen Catalog Number: AG24009	Observed MW: 50-55 kDa	

Applications

Tested Applications: IF, IHC, WB, ELISA	Positive Controls: WB : SW 1990 cells, BxPC-3 cells, COLO 320 cells
Cited Applications: IF	IHC : human pancreas tissue, human colon cancer tissue
Species Specificity: human, pig	IF : BxPC-3 cells,
Cited Species: human	

Note-IHC: suggested antigen retrieval with TE buffer pH 9.0; (*) Alternatively, antigen retrieval may be performed with citrate buffer pH 6.0

Background Information

LIPH(Lipase member H) is also named as LPDLR, MPAPLA1, PLA1B. It is a phosphatidic acid-selective phospholipase A1 (PLA1) that produces 2-acyl lysophosphatidic acid (LPA) and belongs to the AB hydrolase superfamily and Lipase family. LIPH has a 12-residue lid region, which likely covers a catalytic pocket, and 4 potential N-linked glycosylation sites. Defects in LIPH are the cause of hypotrichosis type 7 (HYPT7).

Notable Publications

Author	Pubmed ID	Journal	Application
Liron Malki	32336749	Genet Med	IF

Storage

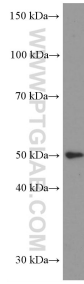
Storage:
Store at -20°C. Stable for one year after shipment.
Storage Buffer:
PBS with 0.02% sodium azide and 50% glycerol pH 7.3.
Aliquoting is unnecessary for -20°C storage

*** 20ul sizes contain 0.1% BSA

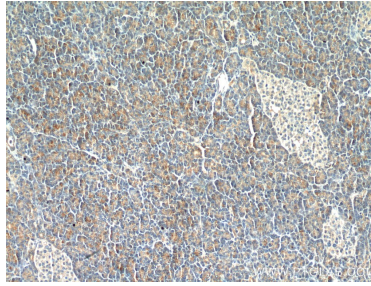
For technical support and original validation data for this product please contact:
T: 1 (888) 4PTGLAB (1-888-478-4522) (toll free in USA), or 1(312) 455-8498 (outside USA)
E: proteintech@ptglab.com
W: ptglab.com

This product is exclusively available under Proteintech Group brand and is not available to purchase from any other manufacturer.

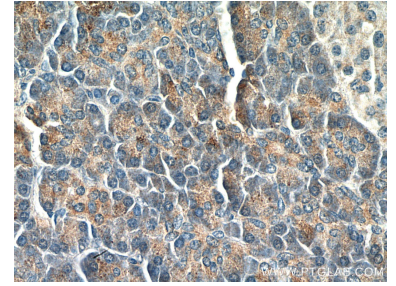
Selected Validation Data



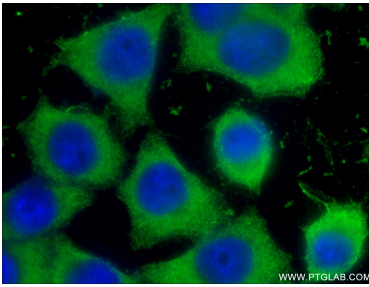
SW 1990 cells were subjected to SDS PAGE followed by western blot with 66303-1-Ig (LIPH Antibody) at dilution of 1:2000 incubated at room temperature for 1.5 hours.



Immunohistochemical analysis of paraffin-embedded human pancreas tissue slide using 66303-1-Ig (LIPH Antibody) at dilution of 1:500 (under 10x lens).



Immunohistochemical analysis of paraffin-embedded human pancreas tissue slide using 66303-1-Ig (LIPH Antibody) at dilution of 1:500 (under 40x lens).



Immunofluorescent analysis of (-20°C Ethanol) fixed BxPC-3 cells using 66303-1-Ig(LIPH antibody) at dilution of 1:50 and Alexa Fluor 488-conjugated AffiniPure Goat Anti-Mouse IgG(H+L).