

LIPH Monoclonal antibody, PBS Only

Catalog Number: 66303-1-PBS

Basic Information

Catalog Number: 66303-1-PBS	GenBank Accession Number: BC064941	Purification Method: Protein A purification
Size: 100ug, Concentration: 1 mg/ml by Nanodrop;	GeneID (NCBI): 200879	CloneNo.: 1F5D10
Source: Mouse	UNIPROT ID: Q8WWY8	
Isotype: IgG2a	Full Name: Lipase, member H	
Immunogen Catalog Number: AG24009	Calculated MW: 51 kDa	
	Observed MW: 50-55 kDa	

Applications

Tested Applications:
WB, IF, IHC, Indirect ELISA

Species Specificity:
human, pig

Background Information

LIPH (Lipase member H) is also named as LPDLR, MPAPLA1, PLA1B. It is a phosphatidic acid-selective phospholipase A1 (PLA1) that produces 2-acyl lysophosphatidic acid (LPA) and belongs to the AB hydrolase superfamily and Lipase family. LIPH has a 12-residue lid region, which likely covers a catalytic pocket, and 4 potential N-linked glycosylation sites. Defects in LIPH are the cause of hypotrichosis type 7 (HYPT7).

Storage

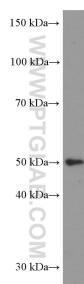
Storage:
Store at -80°C.

Storage Buffer:
PBS Only

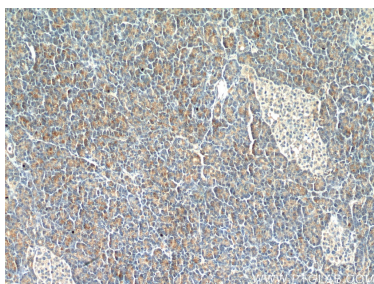
For technical support and original validation data for this product please contact:
T: 1 (888) 4PTGLAB (1-888-478-4522) (toll free in USA), or 1(312) 455-8498 (outside USA)
E: proteintech@ptglab.com
W: ptglab.com

This product is exclusively available under Proteintech Group brand and is not available to purchase from any other manufacturer.

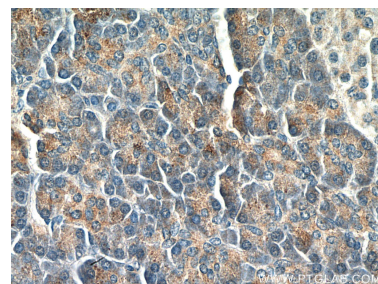
Selected Validation Data



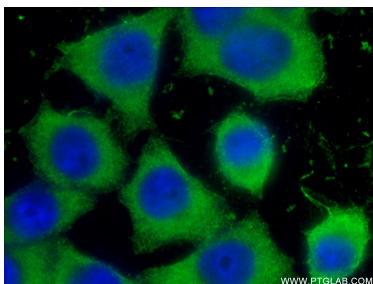
SW 990 cells were subjected to SDS PAGE followed by western blot with 66303-1-Ig (LIPH Antibody) at dilution of 1:2000 incubated at room temperature for 1.5 hours. This data was developed using the same antibody clone with 66303-1-PBS in a different storage buffer formulation.



Immunohistochemical analysis of paraffin-embedded human pancreas tissue slide using 66303-1-Ig (LIPH Antibody) at dilution of 1:500 (under 10x lens). This data was developed using the same antibody clone with 66303-1-PBS in a different storage buffer formulation.



Immunohistochemical analysis of paraffin-embedded human pancreas tissue slide using 66303-1-Ig (LIPH Antibody) at dilution of 1:500 (under 40x lens). This data was developed using the same antibody clone with 66303-1-PBS in a different storage buffer formulation.



Immunofluorescent analysis of (-20°C Ethanol) fixed BxPC-3 cells using 66303-1-Ig(LIPH antibody) at dilution of 1:50 and Alexa Fluor 488-conjugated AffiniPure Goat Anti-Mouse IgG(H+L). This data was developed using the same antibody clone with 66303-1-PBS in a different storage buffer formulation.