

For Research Use Only

TBL2 Monoclonal antibody

Catalog Number: 66307-1-Ig



Basic Information

Catalog Number: 66307-1-Ig	GenBank Accession Number: BC012938	Purification Method: Thiophilic affinity chromatograph
Size: 150ul , Concentration: 500 µg/ml by Bradford method using BSA as the standard;	GeneID (NCBI): 26608	CloneNo.: 1D5C2
Source: Mouse	Full Name: transducin (beta)-like 2	Recommended Dilutions: WB 1:1000-1:4000 IHC 1:50-1:500
Isotype: IgA	Calculated MW: 446 aa, 50 kDa	
Immunogen Catalog Number: AG24225	Observed MW: 50 kDa	

Applications

Tested Applications: IHC, WB, ELISA	Positive Controls: WB : MCF-7 cells, COLO 320 cells, Jurkat cells
Species Specificity: human	IHC : human liver tissue, human colon tissue

Note-IHC: suggested antigen retrieval with TE buffer pH 9.0; (*) Alternatively, antigen retrieval may be performed with citrate buffer pH 6.0

Background Information

TBL2 belongs to a member of the beta-transducin protein family. This gene is commonly deleted in Williams-Beuren syndrome, a developmental disorder with multi-system manifestations caused by haploinsufficiency for contiguous genes deleted in chromosome region 7q11.23. TBL2 encodes a protein with four putative WD40 repeats, which may be involved in some intracellular signaling pathway.

Storage

Storage:
Store at -20°C. Stable for one year after shipment.
Storage Buffer:
PBS with 0.02% sodium azide and 50% glycerol pH 7.3.
Aliquoting is unnecessary for -20°C storage

*** 20ul sizes contain 0.1% BSA

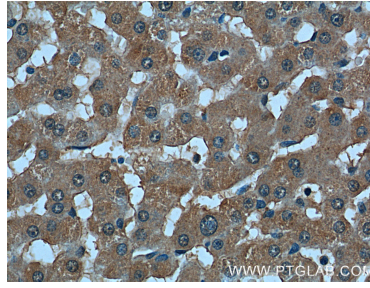
For technical support and original validation data for this product please contact:
T: 1 (888) 4PTGLAB (1-888-478-4522) (toll free in USA), or 1(312) 455-8498 (outside USA)
E: proteintech@ptglab.com
W: ptglab.com

This product is exclusively available under Proteintech Group brand and is not available to purchase from any other manufacturer.

Selected Validation Data



MCF-7 cells were subjected to SDS PAGE followed by western blot with 66307-1-Ig (TBL2 Antibody) at dilution of 1:2000 incubated at room temperature for 1.5 hours.



Immunohistochemical analysis of paraffin-embedded human liver tissue slide using 66307-1-Ig (TBL2 Antibody) at dilution of 1:200 (under 40x lens).