

Integrin Beta 1 Monoclonal antibody

Catalog Number: 66315-1-Ig

1 Publications

Basic Information

Catalog Number: 66315-1-Ig	GenBank Accession Number: BC020057	Purification Method: Protein G purification
Size: 150ul , Concentration: 2300 µg/ml by Nanodrop and 1000 µg/ml by Bradford method using BSA as the standard;	GeneID (NCBI): 3688	CloneNo.: 1A7C9
Source: Mouse	Full Name: integrin, beta 1 (fibronectin receptor, beta polypeptide, antigen CD29 includes MDF2, MSK12)	Recommended Dilutions: WB 1:2000-1:16000
Isotype: IgG1	Calculated MW: 88 kDa	
Immunogen Catalog Number: AG24476	Observed MW: 130 kDa	

Applications

Tested Applications: FC, WB, ELISA	Positive Controls: WB : HT-1080 cells, HUVEC cells
Cited Applications: WB	
Species Specificity: human	
Cited Species: human	

Background Information

Integrin beta-1 (ITGB1), also named as CD29, is a 130 kDa single chain type I glycoprotein that is expressed in a heterodimeric complex with one of six distinct α subunits, comprising the very late activation antigen (VLA) subfamily of adhesion receptors. It is one of the essential surface molecules expressed on human MSC from bone marrow and other sources. The β 1 subunit is also broadly expressed on lymphocytes and monocytes, weakly expressed on granulocytes, and not expressed on erythrocytes. These receptors are involved in a variety of cell-cell and cell-matrix interactions.

Notable Publications

Author	Pubmed ID	Journal	Application
Eun-Ah Cho	33275877	Structure	WB

Storage

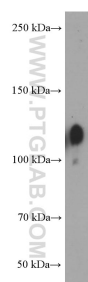
Storage:
Store at -20°C. Stable for one year after shipment.
Storage Buffer:
PBS with 0.02% sodium azide and 50% glycerol pH 7.3.
Aliquoting is unnecessary for -20°C storage

*** 20ul sizes contain 0.1% BSA

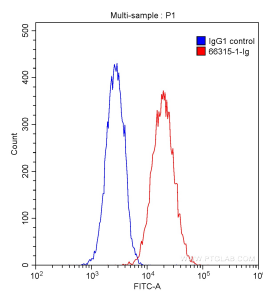
For technical support and original validation data for this product please contact:
T: 1 (888) 4PTGLAB (1-888-478-4522) (toll free in USA), or 1(312) 455-8498 (outside USA)
E: proteintech@ptglab.com
W: ptglab.com

This product is exclusively available under Proteintech Group brand and is not available to purchase from any other manufacturer.

Selected Validation Data



HT-1080 cells were subjected to SDS PAGE followed by western blot with 66315-1-Ig (Integrin beta-1 Antibody) at dilution of 1:8000 incubated at room temperature for 1.5 hours.



1×10^6 HUVEC cells were stained with 0.20 ug Anti-Human Integrin beta-1 (66315-1-Ig, Clone:1A7C9) (red) or 0.20 ug Mouse IgG1 Isotype Control (66360-1-Ig, Clone:T1F8D3F10) (blue) and CoraLite®488-Conjugated AffiniPure Goat Anti-Mouse IgG(H+L) with dilution of 1:1000. Cells were fixed with 90% MeOH.