

For Research Use Only

# Peripherin Monoclonal antibody, PBS Only (Detector)

Catalog Number: 66317-1-PBS



## Basic Information

<b>Catalog Number:</b> 66317-1-PBS	<b>GenBank Accession Number:</b> BC032703	<b>Purification Method:</b> Protein A purification
<b>Size:</b> 100ug , Concentration: 1 mg/ml by Nanodrop;	<b>GeneID (NCBI):</b> 5630	<b>CloneNo.:</b> 1H10B3
<b>Source:</b> Mouse	<b>UNIPROT ID:</b> P41219	
<b>Isotype:</b> IgG2b	<b>Full Name:</b> peripherin	
<b>Immunogen Catalog Number:</b> AG11116	<b>Calculated MW:</b> 470 aa, 54 kDa	
	<b>Observed MW:</b> 50-54 kDa	

## Applications

**Tested Applications:**  
WB, IHC, FC (Intra), Cytometric bead array, Indirect ELISA

**Species Specificity:**  
human, rat, pig

## Product Information

66317-1-PBS targets Peripherin as part of a matched antibody pair:

MP51128-2: 66317-4-PBS capture and 66317-1-PBS detection (validated in Cytometric bead array)

Unconjugated mouse monoclonal antibody pair in PBS only (BSA and azide free) storage buffer at a concentration of 1 mg/mL, ready for conjugation.

This conjugation ready format makes antibodies ideal for use in many applications including: ELISAs, multiplex assays requiring matched pairs, mass cytometry, and multiplex imaging applications. Antibody use should be optimized by the end user for each application and assay.

## Storage

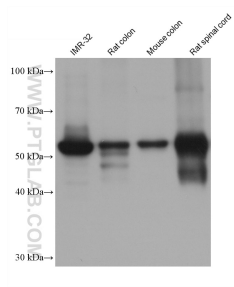
**Storage:**  
Store at -80°C.

**Storage Buffer:**  
PBS Only

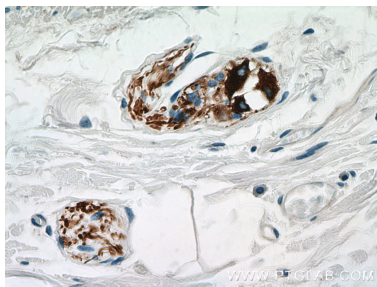
For technical support and original validation data for this product please contact:  
T: 1 (888) 4PTGLAB (1-888-478-4522) (toll free in USA), or 1(312) 455-8498 (outside USA)  
E: [proteintech@ptglab.com](mailto:proteintech@ptglab.com)  
W: [ptglab.com](http://ptglab.com)

This product is exclusively available under Proteintech Group brand and is not available to purchase from any other manufacturer.

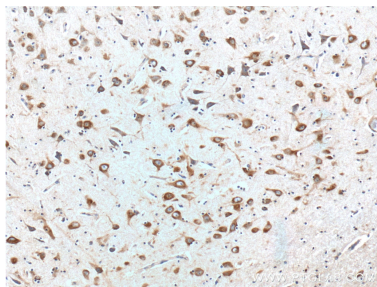
Selected Validation Data



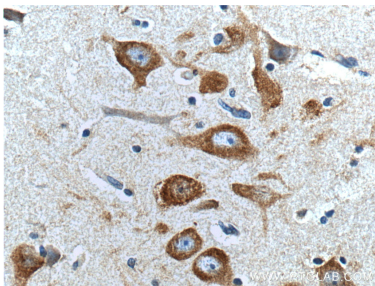
Various lysates were subjected to SDS PAGE followed by western blot with 66317-1-Ig (Peripherin antibody) at dilution of 1:20000 incubated at room temperature for 1.5 hours. This data was developed using the same antibody clone with 66317-1-PBS in a different storage buffer formulation.



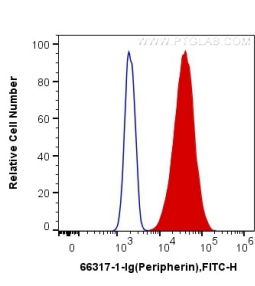
Immunohistochemical analysis of paraffin-embedded human colon tissue slide using 66317-1-Ig (Peripherin Antibody) at dilution of 1:1000 (under 40x lens). This data was developed using the same antibody clone with 66317-1-PBS in a different storage buffer formulation.



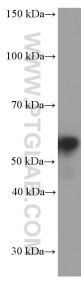
Immunohistochemical analysis of paraffin-embedded human brain tissue slide using 66317-1-Ig (Peripherin antibody) at dilution of 1:100 (under 10x lens). This data was developed using the same antibody clone with 66317-1-PBS in a different storage buffer formulation.



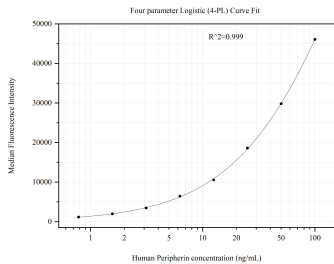
Immunohistochemical analysis of paraffin-embedded human brain tissue slide using 66317-1-Ig (Peripherin antibody) at dilution of 1:100 (under 40x lens). This data was developed using the same antibody clone with 66317-1-PBS in a different storage buffer formulation.



1X10<sup>6</sup> PC-12 cells were intracellularly stained with 0.4 ug Anti-Human Peripherin (66317-1-Ig, Clone:1H10B3) and CoraLite®488-Conjugated AffiniPure Goat Anti-Mouse IgG(H+L) at dilution 1:1000 (red), or 0.4 ug Control Antibody. Cells were fixed with 4% PFA and permeabilized with Flow Cytometry Perm Buffer (PF00011-C). This data was developed using the same antibody clone with 66317-1-PBS in a different storage buffer formulation.



rat brain tissue were subjected to SDS PAGE followed by western blot with 66317-1-Ig (Peripherin Antibody) at dilution of 1:3000 incubated at room temperature for 1.5 hours. This data was developed using the same antibody clone with 66317-1-PBS in a different storage buffer formulation.



Cytometric bead array standard curve of MP51128-2, Peripherin Monoclonal Matched Antibody Pair, PBS Only. Capture antibody: 66317-4-PBS. Detection antibody: 66317-1-PBS. Standard:Ag11116. Range: 0.781-100 ng/mL