

For Research Use Only

Glutamine Synthetase Monoclonal antibody

Catalog Number: 66323-2-Ig

Featured Product

2 Publications



Basic Information

Catalog Number:

66323-2-Ig

Size:

150ul, Concentration: 1300 ug/ml by 2752
Nanodrop and 1000 ug/ml by Bradford
method using BSA as the standard;

Source:

Mouse

Isotype:

IgG1

Immunogen Catalog Number:

AG6309

GenBank Accession Number:

BC011700

GeneID (NCBI):

2752

UNIPROT ID:

P15104

Full Name:

glutamate-ammonia ligase
(glutamine synthetase)

Calculated MW:

374 aa, 42 kDa

Observed MW:

42 kDa

Purification Method:

Protein A purification

CloneNo.:

1B6G4

Recommended Dilutions:

WB 1:500-1:2000

IHC 1:2500-1:10000

IF-P 1:200-1:800

IF-Fro 1:200-1:800

Applications

Tested Applications:

WB, IHC, IF-P, IF-Fro, FC (Intra), ELISA

Cited Applications:

IF

Species Specificity:

human, mouse, rat

Cited Species:

rat, canine

**Note-IHC: suggested antigen retrieval with
TE buffer pH 9.0; (*) Alternatively, antigen
retrieval may be performed with citrate
buffer pH 6.0**

Positive Controls:

WB: Jurkat cells,

IHC: human liver cancer tissue, human liver tissue,
mouse liver tissue, rat liver tissue

IF-P: mouse liver tissue, mouse brain tissue

IF-Fro: mouse liver tissue,

Notable Publications

Author	Pubmed ID	Journal	Application
Yuxue Mu	39254570	Neural Regen Res	IF
Yu Huan	36204864	Neural Regen Res	IF

Storage

Storage:

Store at -20°C. Stable for one year after shipment.

Storage Buffer:

PBS with 0.02% sodium azide and 50% glycerol, pH7.3

Aliquoting is unnecessary for -20°C storage

*** 20ul sizes contain 0.1% BSA

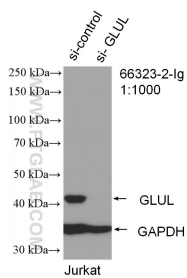
For technical support and original validation data for this product please contact:

T: 1 (888) 4PTGLAB (1-888-478-4522) (toll free
in USA), or 1(312) 455-8498 (outside USA)

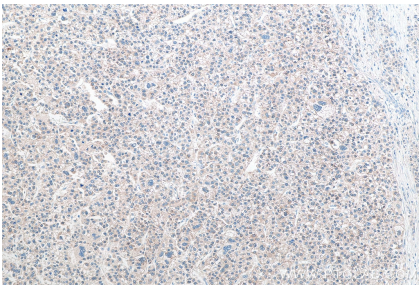
E: proteintech@ptglab.com
W: ptglab.com

This product is exclusively available under Proteintech
Group brand and is not available to purchase from any
other manufacturer.

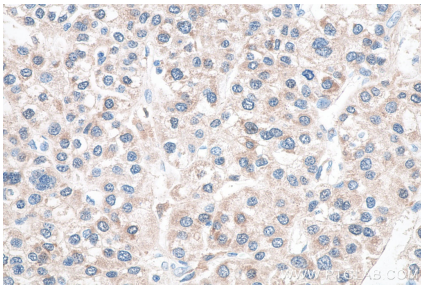
Selected Validation Data



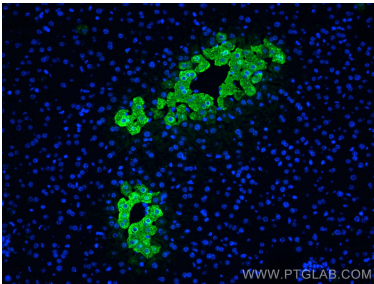
WB result of Glutamine synthetase antibody (66323-2-Ig; 1:1000; incubated at room temperature for 1.5 hours) with sh-Control and sh-Glutamine synthetase transfected Jurkat cells.



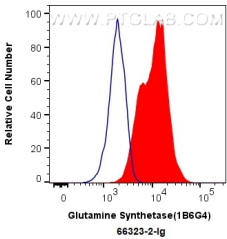
Immunohistochemical analysis of paraffin-embedded human liver cancer tissue slide using 66323-2-Ig (Glutamine Synthetase antibody) at dilution of 1:5000 (under 10x lens). Heat mediated antigen retrieval with Tris-EDTA buffer (pH 9.0).



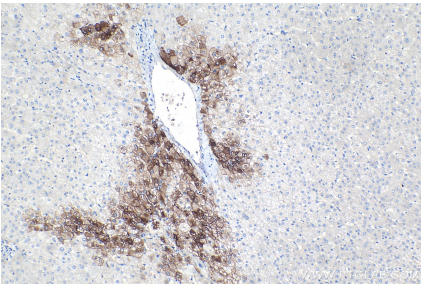
Immunohistochemical analysis of paraffin-embedded human liver cancer tissue slide using 66323-2-Ig (Glutamine Synthetase antibody) at dilution of 1:5000 (under 40x lens). Heat mediated antigen retrieval with Tris-EDTA buffer (pH 9.0).



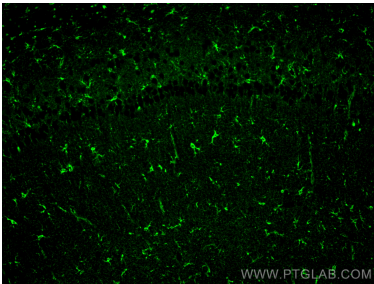
Immunofluorescent analysis of (4% PFA) fixed mouse liver tissue using Glutamine Synthetase antibody (66323-2-Ig, Clone: 1B6G4) at dilution of 1:400 and CoraLite®488-Conjugated AffiniPure Goat Anti-Mouse IgG(H+L).



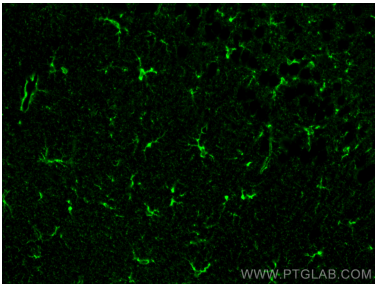
1X10⁶ HepG2 cells were intracellularly stained with 0.4 ug Anti-Human Glutamine Synthetase (66323-2-Ig, Clone:1B6G4) and CoraLite®488-Conjugated AffiniPure Goat Anti-Mouse IgG(H+L) at dilution 1:1000 (red), or 0.4 ug Mouse IgG1 Isotype Control (MOPC-21) (65124-1-Ig, Clone: MOPC-21) (blue). Cells were fixed with 4% PFA and permeabilized with Flow Cytometry Perm Buffer (PF00011-C).



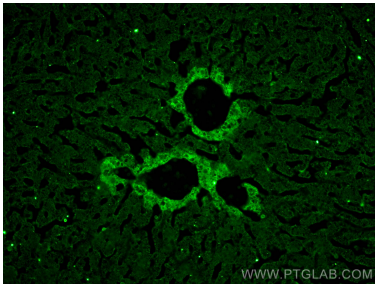
Immunohistochemical analysis of paraffin-embedded human liver tissue slide using 66323-2-Ig (Glutamine Synthetase antibody) at dilution of 1:4000 (under 10x lens). Heat mediated antigen retrieval with Tris-EDTA buffer (pH 9.0).



Immunofluorescent analysis of (4% PFA) fixed paraffin-embedded mouse brain tissue using Glutamine Synthetase antibody (66323-2-Ig, Clone: 1B6G4) at dilution of 1:800 and Multi-rAb CoraLite® Plus 488-Goat Anti-Mouse Recombinant Secondary Antibody (H+L) (RGAM002). Heat mediated antigen retrieval with Tris-EDTA buffer (pH 9.0).



Immunofluorescent analysis of (4% PFA) fixed paraffin-embedded mouse brain tissue using Glutamine Synthetase antibody (66323-2-Ig, Clone: 1B6G4) at dilution of 1:800 and Multi-rAb CoraLite® Plus 488-Goat Anti-Mouse Recombinant Secondary Antibody (H+L) (RGAM002). Heat mediated antigen retrieval with Tris-EDTA buffer (pH 9.0).



Immunofluorescent analysis of (4% PFA) fixed frozen OCT-embedded mouse liver tissue using 66323-2-Ig (Glutamine Synthetase antibody) at dilution of 1:400 and CoraLite®488-Conjugated AffiniPure Goat Anti-Mouse IgG(H+L).