

For Research Use Only

# Glutamine Synthetase Monoclonal antibody, PBS Only (Capture)

Catalog Number: 66323-2-PBS

Featured Product



## Basic Information

### Catalog Number:

66323-2-PBS

### Size:

100ug, Concentration: 1mg/ml by Nanodrop;

### Source:

Mouse

### Isotype:

IgG1

### Immunogen Catalog Number:

AG6309

### GenBank Accession Number:

BC011700

### GeneID (NCBI):

2752

### UNIPROT ID:

P15104

### Full Name:

glutamate-ammonia ligase (glutamine synthetase)

### Calculated MW:

374 aa, 42 kDa

### Observed MW:

42 kDa

### Purification Method:

Protein A purification

### CloneNo.:

1B6G4

## Applications

### Tested Applications:

WB, IHC, IF-P, IF-Fro, FC (Intra), Cytometric bead array, Indirect ELISA

### Species Specificity:

human, mouse, rat

## Product Information

66323-2-PBS targets Glutamine Synthetase as part of a matched antibody pair:

MP50483-1: 66323-2-PBS capture and 66323-1-PBS detection (validated in Cytometric bead array)

Unconjugated mouse monoclonal antibody pair in PBS only (BSA and azide free) storage buffer at a concentration of 1 mg/mL, ready for conjugation.

This conjugation ready format makes antibodies ideal for use in many applications including: ELISAs, multiplex assays requiring matched pairs, mass cytometry, and multiplex imaging applications. Antibody use should be optimized by the end user for each application and assay.

## Storage

### Storage:

Store at -80°C.

### Storage Buffer:

PBS only, pH7.3

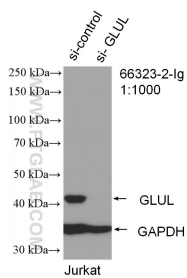
For technical support and original validation data for this product please contact:

T: 1 (888) 4PTGLAB (1-888-478-4522) (toll free in USA), or 1(312) 455-8498 (outside USA)

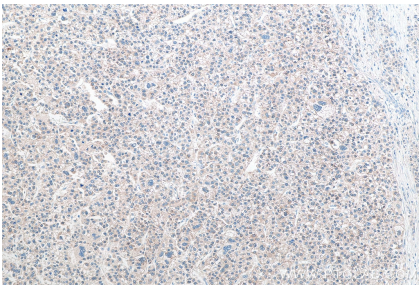
E: [proteintech@ptglab.com](mailto:proteintech@ptglab.com)  
W: [ptglab.com](http://ptglab.com)

This product is exclusively available under Proteintech Group brand and is not available to purchase from any other manufacturer.

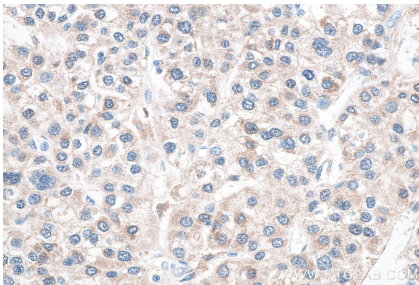
Selected Validation Data



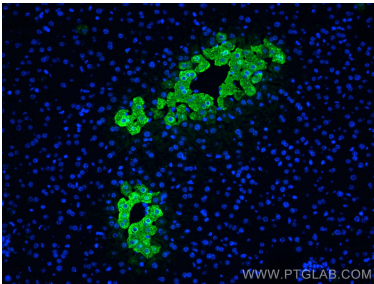
WB result of Glutamine synthetase antibody (66323-2-Ig; 1:1000; incubated at room temperature for 1.5 hours) with sh-Control and sh-Glutamine synthetase transfected Jurkat cells. This data was developed using the same antibody clone with 66323-2-PBS in a different storage buffer formulation.



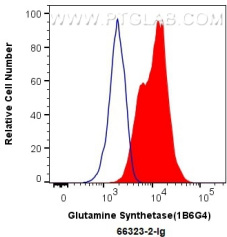
Immunohistochemical analysis of paraffin-embedded human liver cancer tissue slide using 66323-2-Ig (Glutamine Synthetase antibody) at dilution of 1:5000 (under 10x lens). Heat mediated antigen retrieval with Tris-EDTA buffer (pH 9.0). This data was developed using the same antibody clone with 66323-2-PBS in a different storage buffer formulation.



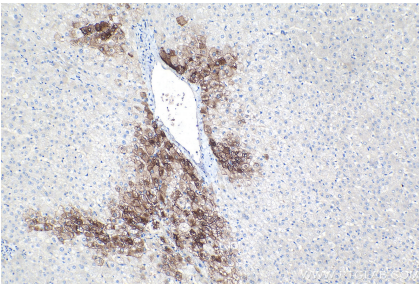
Immunohistochemical analysis of paraffin-embedded human liver cancer tissue slide using 66323-2-Ig (Glutamine Synthetase antibody) at dilution of 1:5000 (under 40x lens). Heat mediated antigen retrieval with Tris-EDTA buffer (pH 9.0). This data was developed using the same antibody clone with 66323-2-PBS in a different storage buffer formulation.



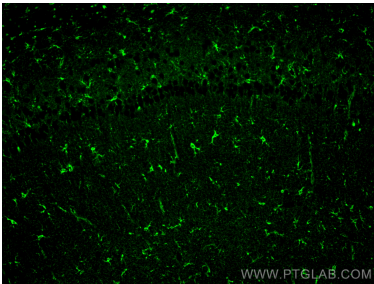
Immunofluorescent analysis of (4% PFA) fixed mouse liver tissue using Glutamine Synthetase antibody (66323-2-Ig, Clone: 1B6G4) at dilution of 1:400 and CoraLite®488-Conjugated AffiniPure Goat Anti-Mouse IgG(H+L). This data was developed using the same antibody clone with 66323-2-PBS in a different storage buffer formulation.



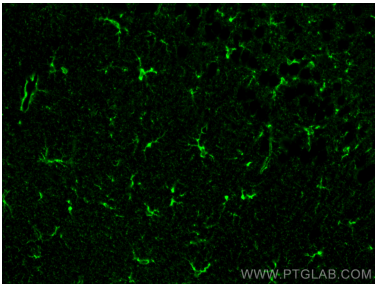
1X10<sup>6</sup> HepG2 cells were intracellularly stained with 0.4 ug Anti-Human Glutamine Synthetase (66323-2-Ig, Clone:1B6G4) and CoraLite®488-Conjugated AffiniPure Goat Anti-Mouse IgG(H+L) at dilution 1:1000 (red), or 0.4 ug Mouse IgG1 Isotype Control (MOPC-21) (65124-1-Ig, Clone: MOPC-21) (blue). Cells were fixed with 4% PFA and permeabilized with Flow Cytometry Perm Buffer (PF00011-C). This data was developed using the same antibody clone with 66323-2-



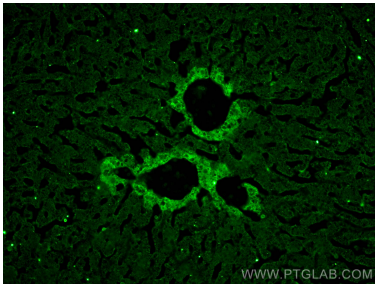
Immunohistochemical analysis of paraffin-embedded human liver tissue slide using 66323-2-Ig (Glutamine Synthetase antibody) at dilution of 1:4000 (under 10x lens). Heat mediated antigen retrieval with Tris-EDTA buffer (pH 9.0). This data was developed using the same antibody clone with 66323-2-PBS in a different storage buffer formulation.



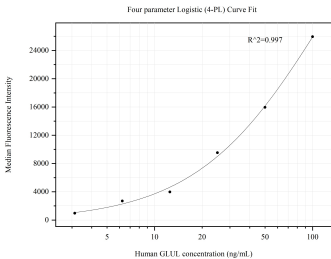
Immunofluorescent analysis of (4% PFA) fixed paraffin-embedded mouse brain tissue using Glutamine Synthetase antibody (66323-2-Ig, Clone: 1B6G4) at dilution of 1:800 and Multi-rAb CoraLite® Plus 488-Goat Anti-Mouse Recombinant Secondary Antibody (H+L) (RGAM002). Heat mediated antigen retrieval with Tris-EDTA buffer (pH 9.0). This data was developed using the same antibody clone with 66323-2-PBS in a different storage buffer formulation.



Immunofluorescent analysis of (4% PFA) fixed paraffin-embedded mouse brain tissue using Glutamine Synthetase antibody (66323-2-Ig, Clone: 1B6G4) at dilution of 1:800 and Multi-rAb CoraLite® Plus 488-Goat Anti-Mouse Recombinant Secondary Antibody (H+L) (RGAM002). Heat mediated antigen retrieval with Tris-EDTA buffer (pH 9.0). This data was developed using the same antibody clone with 66323-2-PBS in a different storage buffer formulation.



Immunofluorescent analysis of (4% PFA) fixed frozen OCT-embedded mouse liver tissue using 66323-2-Ig (Glutamine Synthetase antibody) at dilution of 1:400 and CoraLite®488-Conjugated AffiniPure Goat Anti-Mouse IgG(H+L). This data was developed using the same antibody clone with 66323-2-PBS in a different storage buffer formulation.



Cytometric bead array standard curve of MP50483-1, Glutamine synthetase Monoclonal Matched Antibody Pair, PBS Only. Capture antibody: 66323-2-PBS. Detection antibody: 66323-1-PBS. Standard:Ag6309. Range: 3.125-100 ng/mL