

For Research Use Only

VPS37A Monoclonal antibody, PBS Only



Catalog Number: 66327-1-PBS

Basic Information

Catalog Number: 66327-1-PBS	GenBank Accession Number: BC022363	Purification Method: Protein G purification
Size: 100ug , Concentration: 1 mg/ml by Nanodrop;	GeneID (NCBI): 137492	CloneNo.: 1F9A4
Source: Mouse	UNIPROT ID: Q8NEZ2	
Isotype: IgG1	Full Name: vacuolar protein sorting 37 homolog A (S. cerevisiae)	
Immunogen Catalog Number: AG19108	Calculated MW: 44 kDa	
	Observed MW: 44 kDa	

Applications

Tested Applications:
WB, IF, IHC, Indirect ELISA

Species Specificity:
human

Background Information

VPS37A, also named as HCRP1, belongs to the VPS37 family. It is a regulator of vesicular trafficking process. VPS37A is a member of the endosomal sorting complex required for transport (ESCRT) system, in upper motor neuron disease. ESCRT has been shown to play a central role in intracellular trafficking, in the maturation of multivesicular bodies and the sorting of ubiquitinated membrane proteins into internal luminal vesicles.

Storage

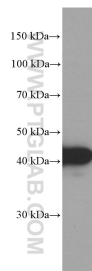
Storage:
Store at -80°C.

Storage Buffer:
PBS Only

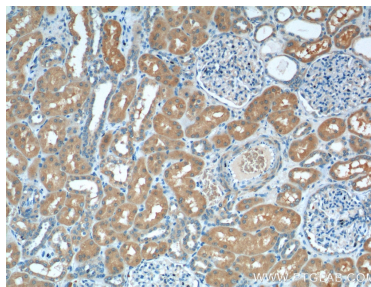
For technical support and original validation data for this product please contact:
T: 1 (888) 4PTGLAB (1-888-478-4522) (toll free in USA), or 1(312) 455-8498 (outside USA)
E: proteintech@ptglab.com
W: ptglab.com

This product is exclusively available under Proteintech Group brand and is not available to purchase from any other manufacturer.

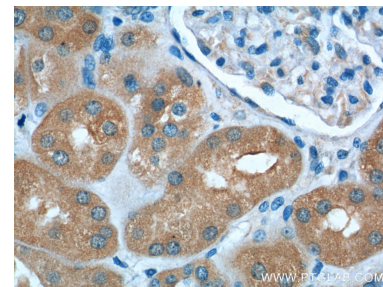
Selected Validation Data



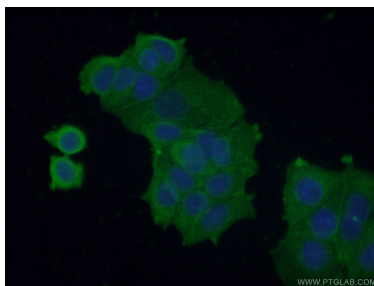
SW 990 cells were subjected to SDS PAGE followed by western blot with 66327-1-Ig (VPS37A Antibody) at dilution of 1:2000 incubated at room temperature for 1.5 hours. This data was developed using the same antibody clone with 66327-1-PBS in a different storage buffer formulation.



Immunohistochemical analysis of paraffin-embedded human kidney tissue slide using 66327-1-Ig (VPS37A Antibody) at dilution of 1:200 (under 10x lens). This data was developed using the same antibody clone with 66327-1-PBS in a different storage buffer formulation.



Immunohistochemical analysis of paraffin-embedded human kidney tissue slide using 66327-1-Ig (VPS37A Antibody) at dilution of 1:200 (under 40x lens). This data was developed using the same antibody clone with 66327-1-PBS in a different storage buffer formulation.



Immunofluorescent analysis of (-20°C Ethanol) fixed MCF-7 cells using 66327-1-Ig (VPS37A antibody) at dilution of 1:100 and Alexa Fluor 488-conjugated AffiniPure Goat Anti-Mouse IgG(H+L). This data was developed using the same antibody clone with 66327-1-PBS in a different storage buffer formulation.