

For Research Use Only

# SFRP2 Monoclonal antibody

Catalog Number: 66328-1-Ig **1 Publications**



## Basic Information

<b>Catalog Number:</b> 66328-1-Ig	<b>GenBank Accession Number:</b> BC008666	<b>Purification Method:</b> Protein A purification
<b>Size:</b> 150ul , Concentration: 1000 ug/ml by Nanodrop;	<b>GeneID (NCBI):</b> 6423	<b>CloneNo.:</b> 1F3A1
<b>Source:</b> Mouse	<b>UNIPROT ID:</b> Q96HF1	<b>Recommended Dilutions:</b> WB 1:1000-1:6000 IHC 1:50-1:500 IF/ICC 1:750-1:3000
<b>Isotype:</b> IgG1	<b>Full Name:</b> secreted frizzled-related protein 2	
<b>Immunogen Catalog Number:</b> AG18840	<b>Calculated MW:</b> 295 aa, 34 kDa	
	<b>Observed MW:</b> 38 kDa	

## Applications

<b>Tested Applications:</b> WB, IHC, IF/ICC, ELISA	<b>Positive Controls:</b> WB : pig brain tissue, Y79 cells, COLO 320 cells, rat brain tissue, rabbit brain tissue, mouse brain tissue IHC : human malignant melanoma tissue, IF/ICC : A549 cells,
<b>Cited Applications:</b> WB	
<b>Species Specificity:</b> human, rat, pig, rabbit, mouse	
<b>Cited Species:</b> human	
<b>Note-IHC: suggested antigen retrieval with TE buffer pH 9.0; (*) Alternatively, antigen retrieval may be performed with citrate buffer pH 6.0</b>	

## Background Information

Secreted frizzled-related protein 2 (Sfrp2) is a secreted glycoprotein molecule containing an N terminal cysteine-rich domain, which is typically 30-50% identical to the putative Wnt-binding site of the frizzled receptor, and a C terminal heparin-binding domain with weak homology to netrins. It has been implicated in diverse cellular processes, including embryogenesis, regulation of cell apoptosis, and cell differentiation. Methylation of this gene is a potential marker for the presence of colorectal cancer.

## Notable Publications

Author	Pubmed ID	Journal	Application
Xin Tao	30954576	Exp Cell Res	WB

## Storage

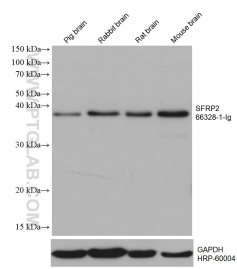
**Storage:**  
Store at -20°C. Stable for one year after shipment.  
**Storage Buffer:**  
PBS with 0.02% sodium azide and 50% glycerol pH 7.3.  
Aliquoting is unnecessary for -20°C storage

\*\*\* 20ul sizes contain 0.1% BSA

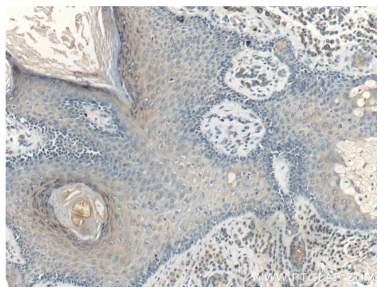
For technical support and original validation data for this product please contact:  
T: 1 (888) 4PTGLAB (1-888-478-4522) (toll free in USA), or 1(312) 455-8498 (outside USA)  
E: [proteintech@ptglab.com](mailto:proteintech@ptglab.com)  
W: [ptglab.com](http://ptglab.com)

This product is exclusively available under Proteintech Group brand and is not available to purchase from any other manufacturer.

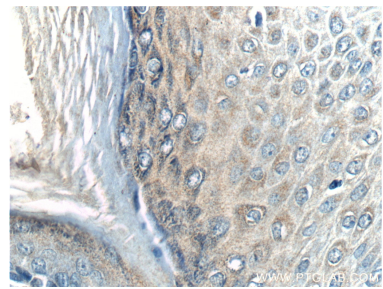
Selected Validation Data



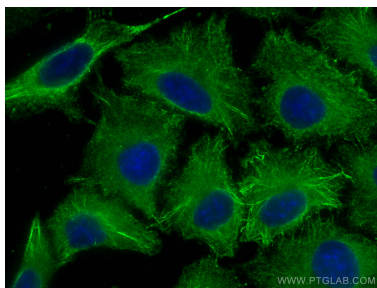
Various lysates were subjected to SDS PAGE followed by western blot with 66328-1-Ig (SFRP2 antibody) at dilution of 1:3000 incubated at room temperature for 1.5 hours. The membrane was stripped and reblotted with HRP-conjugated GAPDH Monoclonal antibody (HRP-60004) as loading control.



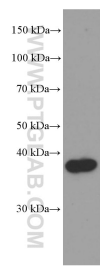
Immunohistochemical analysis of paraffin-embedded human malignant melanoma tissue slide using 66328-1-Ig (SFRP2 Antibody) at dilution of 1:200 (under 10x lens).



Immunohistochemical analysis of paraffin-embedded human malignant melanoma tissue slide using 66328-1-Ig (SFRP2 Antibody) at dilution of 1:200 (under 40x lens).



Immunofluorescent analysis of (-20°C Methanol) fixed A549 cells using SFRP2 antibody (66328-1-Ig, Clone: 1F3A1 ) at dilution of 1:1500 and CoraLite®488-Conjugated Goat Anti-Mouse IgG(H+L).



rat brain tissue were subjected to SDS PAGE followed by western blot with 66328-1-Ig (SFRP2 Antibody) at dilution of 1:2000 incubated at room temperature for 1.5 hours.