

# IGSF2/CD101 Monoclonal antibody

Catalog Number: 66333-1-Ig

## Basic Information

**Catalog Number:**

66333-1-Ig

**Size:**

150ul, Concentration: 1300 ug/ml by Nanodrop and 1000 ug/ml by Bradford method using BSA as the standard;

**Source:**

Mouse

**Isotype:**

IgG1

**Immunogen Catalog Number:**

AG23297

**GenBank Accession Number:**

BC136484

**GeneID (NCBI):**

9398

**UNIPROT ID:**

Q93033

**Full Name:**

immunoglobulin superfamily, member 2

**Observed MW:**

120 kDa

**Purification Method:**

Protein A purification

**CloneNo.:**

1E6A7

**Recommended Dilutions:**

WB 1:5000-1:50000

IHC 1:50-1:500

## Applications

**Tested Applications:**

WB, IHC, ELISA

**Species Specificity:**

human, mouse

**Note-IHC: suggested antigen retrieval with TE buffer pH 9.0; (\*) Alternatively, antigen retrieval may be performed with citrate buffer pH 6.0**

**Positive Controls:**

WB : RAW 264.7 cells, NR8383 cells

IHC : human lung cancer tissue,

## Background Information

IGSF2, also known as CD101, is a low abundance protein. Expression of CD101 is found on monocytes, granulocytes and dendritic cells. In addition expression on T lymphocytes is important for cell activation. It plays a role as inhibitor of T-cells proliferation induced by CD3 and inhibits expression of IL2RA on activated T-cells and secretion of IL2.

## Storage

**Storage:**

Store at -20°C. Stable for one year after shipment.

**Storage Buffer:**

PBS with 0.02% sodium azide and 50% glycerol pH 7.3.

Aliquoting is unnecessary for -20°C storage

\*\*\* 20ul sizes contain 0.1% BSA

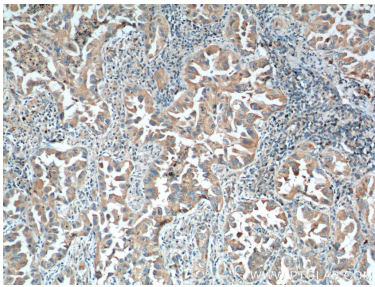
For technical support and original validation data for this product please contact:

T: 1 (888) 4PTGLAB (1-888-478-4522) (toll free in USA), or 1(312) 455-8498 (outside USA)

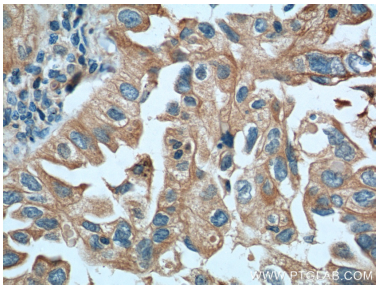
E: proteintech@ptglab.com  
W: ptglab.com

This product is exclusively available under Proteintech Group brand and is not available to purchase from any other manufacturer.

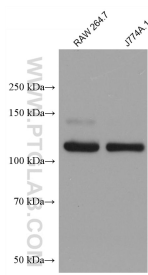
Selected Validation Data



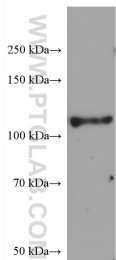
Immunohistochemical analysis of paraffin-embedded human lung cancer tissue slide using 66333-1-Ig (IGSF2 Antibody) at dilution of 1:200 (under 10x lens). Heat mediated antigen retrieval with Tris-EDTA buffer (pH 9.0).



Immunohistochemical analysis of paraffin-embedded human lung cancer tissue slide using 66333-1-Ig (IGSF2 Antibody) at dilution of 1:200 (under 40x lens). Heat mediated antigen retrieval with Tris-EDTA buffer (pH 9.0).



Various lysates were subjected to SDS PAGE followed by western blot with 66333-1-Ig (IGSF2 antibody) at dilution of 1:10000 incubated at room temperature for 1.5 hours.



NR8383 cells were subjected to SDS PAGE followed by western blot with 66333-1-Ig (IGSF2 antibody) at dilution of 1:10000 incubated at room temperature for 1.5 hours.