

For Research Use Only

RAB5A Monoclonal antibody

Catalog Number: 66339-1-Ig **7 Publications**



Basic Information

| | | |
|--|--|---|
| Catalog Number: 66339-1-Ig | GenBank Accession Number: BC001267 | Purification Method: Protein A purification |
| Size: 150ul , Concentration: 2000 ug/ml by Nanodrop and 1000 ug/ml by Bradford method using BSA as the standard; | GeneID (NCBI): 5868 | CloneNo.: 1B6A5 |
| Source: Mouse | UNIPROT ID: P20339 | Recommended Dilutions: WB 1:1000-1:8000 IHC 1:50-1:500 IF/ICC 1:200-1:800 |
| Isotype: IgG2b | Full Name: RAB5A, member RAS oncogene family | |
| Immunogen Catalog Number: AG16781 | Calculated MW: 215 aa, 24 kDa | |
| | Observed MW: 24 kDa | |

Applications

| | |
|--|--|
| Tested Applications: WB, IHC, IF/ICC, ELISA | Positive Controls: WB : HEK-293 cells, fetal human brain tissue, pig brain tissue IHC : human liver cancer tissue, human pancreas tissue IF/ICC : HeLa cells, HepG2 cells |
| Cited Applications: WB, IHC, IF | |
| Species Specificity: human, pig | |
| Cited Species: human, mouse, monkey | |
| Note-IHC: suggested antigen retrieval with TE buffer pH 9.0; (*) Alternatively, antigen retrieval may be performed with citrate buffer pH 6.0 | |

Background Information

Rab5a belongs to the Rab GTPases family proteins, which play roles in endocytosis, exocytosis, and vesicular transportation. Rab family proteins were recently reported to play important roles in human cancer progression. Rab5a was reported to be overexpressed in breast and ovarian cancers and associated with proliferation and invasion.

Notable Publications

| Author | Pubmed ID | Journal | Application |
|----------------|-----------|--------------|-------------|
| Kun Meng | 32504010 | Commun Biol | |
| Jin Wang | 35386458 | Bioact Mater | IF |
| Yoel Benarroch | 33541739 | Clin Ther | IF |

Storage

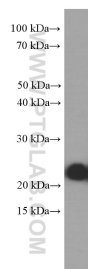
Storage:
Store at -20°C. Stable for one year after shipment.
Storage Buffer:
PBS with 0.02% sodium azide and 50% glycerol, pH7.3
Aliquoting is unnecessary for -20°C storage

*** 20ul sizes contain 0.1% BSA

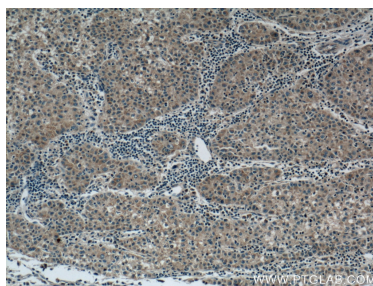
For technical support and original validation data for this product please contact:
T: 1 (888) 4PTGLAB (1-888-478-4522) (toll free in USA), or 1(312) 455-8498 (outside USA)
E: proteintech@ptglab.com
W: ptglab.com

This product is exclusively available under Proteintech Group brand and is not available to purchase from any other manufacturer.

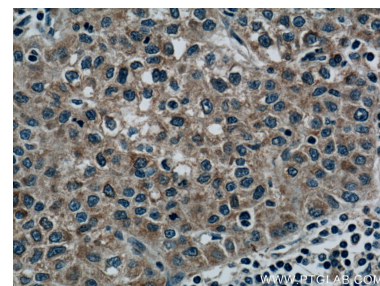
Selected Validation Data



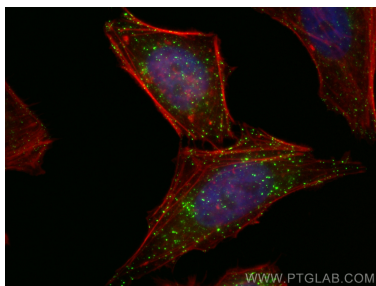
HEK-293 cells were subjected to SDS PAGE followed by western blot with 66339-1-Ig (RAB5A Antibody) at dilution of 1:4000 incubated at room temperature for 1.5 hours.



Immunohistochemical analysis of paraffin-embedded human liver cancer tissue slide using 66339-1-Ig (RAB5A Antibody) at dilution of 1:200 (under 10x lens). Heat mediated antigen retrieval with Tris-EDTA buffer (pH 9.0).



Immunohistochemical analysis of paraffin-embedded human liver cancer tissue slide using 66339-1-Ig (RAB5A Antibody) at dilution of 1:200 (under 40x lens). Heat mediated antigen retrieval with Tris-EDTA buffer (pH 9.0).



Immunofluorescent analysis of (4% PFA) fixed HeLa cells using RAB5A antibody (66339-1-Ig, Clone: 1B6A5) at dilution of 1:400 and CoraLite®488-Conjugated Goat Anti-Mouse IgG(H+L) (SA00013-1), CL594-phalloidin (red).