

For Research Use Only

# BCL6 Monoclonal antibody

Catalog Number: 66340-1-Ig **5 Publications**



## Basic Information

<b>Catalog Number:</b> 66340-1-Ig	<b>GenBank Accession Number:</b> BC150184	<b>Purification Method:</b> Protein G purification
<b>Size:</b> 150ul, Concentration: 1000 µg/ml by Bradford method using BSA as the standard;	<b>GeneID (NCBI):</b> 604	<b>CloneNo.:</b> 1E6B1
<b>Source:</b> Mouse	<b>Full Name:</b> B-cell CLL/Lymphoma 6	<b>Recommended Dilutions:</b> WB 1:1000-1:8000 IHC 1:1000-1:2000
<b>Isotype:</b> IgG1	<b>Calculated MW:</b> 706 aa, 79 kDa	
<b>Immunogen Catalog Number:</b> AG15519	<b>Observed MW:</b> 85 kDa	

## Applications

<b>Tested Applications:</b> FC, IHC, WB, ELISA	<b>Positive Controls:</b> WB : Ramos cells, Raji cells
<b>Cited Applications:</b> IF, IHC	<b>IHC :</b> human tonsillitis tissue,
<b>Species Specificity:</b> human	
<b>Cited Species:</b> human, mouse	

**Note-IHC: suggested antigen retrieval with TE buffer pH 9.0; (\*) Alternatively, antigen retrieval may be performed with citrate buffer pH 6.0**

## Background Information

BCL6, a zinc finger transcription factor, contains a N-terminal BTB/POZ domain and C-terminal zinc finger DNA-binding motifs and represses transcription of a wide range of target proteins and microRNAs. BCL6 protein has been reported as a master regulator of B lymphocyte development and growth, and altered BCL6 protein expression was implicated in pathogenesis of diverse human hematologic malignancies, especially in the diffuse large B cell lymphoma (DLBCL). BCL6 is required for the development of T follicular helper T cells (TFH), a helper T cell subset required for the formation of mature and productive GCs. BCL6 has also been shown to play important regulatory roles in macrophages. This antibody only recognize human species.

## Notable Publications

Author	Pubmed ID	Journal	Application
Johannes Griss	31519915	Nat Commun	IF
Franziska Werner	34248957	Front Immunol	IHC IF
Zhou Qi	35875161	Front Oncol	IHC

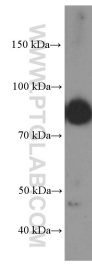
## Storage

**Storage:**  
Store at -20°C. Stable for one year after shipment.  
**Storage Buffer:**  
PBS with 0.02% sodium azide and 50% glycerol pH 7.3.  
Aliquoting is unnecessary for -20°C storage

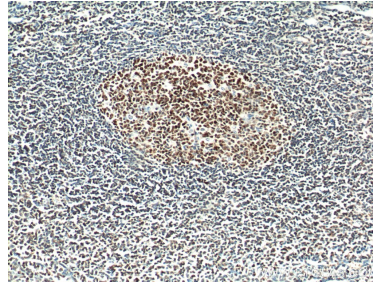
For technical support and original validation data for this product please contact:  
T: 1 (888) 4PTGLAB (1-888-478-4522) (toll free in USA), or 1(312) 455-8498 (outside USA)  
E: proteintech@ptglab.com  
W: ptglab.com

**This product is exclusively available under Proteintech Group brand and is not available to purchase from any other manufacturer.**

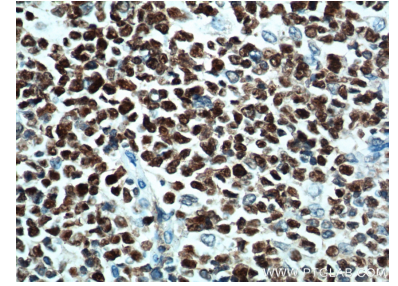
## Selected Validation Data



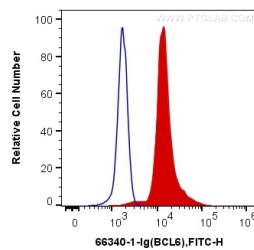
Ramos cells were subjected to SDS PAGE followed by western blot with 66340-1-Ig (BCL6 Antibody) at dilution of 1:4000 incubated at room temperature for 1.5 hours.



Immunohistochemical analysis of paraffin-embedded human tonsillitis tissue slide using 66340-1-Ig (BCL6 Antibody) at dilution of 1:1000 (under 10x lens). Heat mediated antigen retrieved with Tris-EDTA buffer (pH9). The signal was enhanced by soaking the slide in 1% CuSO<sub>4</sub> for 10 minutes after DAB development.



Immunohistochemical analysis of paraffin-embedded human tonsillitis tissue slide using 66340-1-Ig (BCL6 Antibody) at dilution of 1:1000 (under 40x lens). Heat mediated antigen retrieved with Tris-EDTA buffer (pH9). The signal was enhanced by soaking the slide in 1% CuSO<sub>4</sub> for 10 minutes after DAB development.



1X10<sup>6</sup> Jurkat cells were intracellularly stained with 0.2 ug Anti-Human BCL6 (66340-1-Ig, Clone:1E6B1) and CoraLite®488-Conjugated AffiniPure Goat Anti-Mouse IgG(H+L) at dilution 1:1000 (red), or 0.2 ug Mouse IgG1 Isotype Control (66360-1-Ig, Clone: T1F8D3F10) (blue). Cells were fixed and permeabilized with Transcription Factor Staining Buffer Kit (PF00011).