

For Research Use Only

CLIC4 Monoclonal antibody

Catalog Number: 66343-1-Ig

Featured Product

1 Publications



Basic Information

Catalog Number: 66343-1-Ig	GenBank Accession Number: BC012444	Purification Method: Protein G purification
Size: 150ul , Concentration: 2000 µg/ml by Nanodrop and 1000 µg/ml by Bradford method using BSA as the standard;	GeneID (NCBI): 25932	CloneNo.: 1B7F9
Source: Mouse	Full Name: chloride intracellular channel 4	Recommended Dilutions: WB 1:1000-1:4000 IHC 1:50-1:500
Isotype: IgG1	Calculated MW: 253 aa, 29 kDa	
Immunogen Catalog Number: AG2942	Observed MW: 29 kDa	

Applications

Tested Applications:

IHC, WB, ELISA

Cited Applications:

IF, WB

Species Specificity:

human, pig, rat

Cited Species:

rat

Note-IHC: suggested antigen retrieval with TE buffer pH 9.0; (*) Alternatively, antigen retrieval may be performed with citrate buffer pH 6.0

Positive Controls:

WB : human heart tissue, HeLa cells, pig kidney tissue, rat kidney tissue, pig heart tissue

IHC : human heart tissue, human kidney tissue

Background Information

Chloride channels are a diverse group of proteins that regulate fundamental cellular processes including stabilization of cell membrane potential, transepithelial transport, maintenance of intracellular pH, and regulation of cell volume. CLIC4 is a p53- and tumor necrosis factor alpha-regulated cytoplasmic and mitochondrial protein that belongs to the CLIC family of intracellular chloride channels. CLICs have actions distinct from traditional cell membrane chloride channels, including formation of ion channels in intracellular organelles and roles in membrane trafficking, apoptosis, and cell differentiation.

Notable Publications

Author	Pubmed ID	Journal	Application
Songhan Li	35498125	Oxid Med Cell Longev	WB,IF

Storage

Storage:

Store at -20°C. Stable for one year after shipment.

Storage Buffer:

PBS with 0.02% sodium azide and 50% glycerol pH 7.3.

Aliquoting is unnecessary for -20°C storage

*** 20ul sizes contain 0.1% BSA

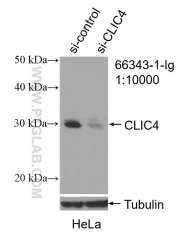
For technical support and original validation data for this product please contact:

T: 1 (888) 4PTGLAB (1-888-478-4522) (toll free in USA), or 1(312) 455-8498 (outside USA)

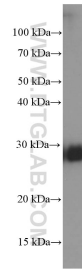
E: proteintech@ptglab.com
W: ptglab.com

This product is exclusively available under Proteintech Group brand and is not available to purchase from any other manufacturer.

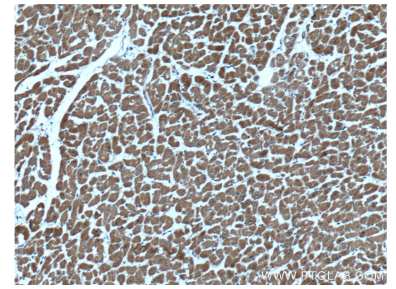
Selected Validation Data



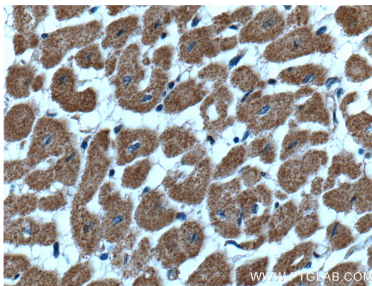
WB result of CLIC4 antibody (66343-1-Ig; 1:10000); incubated at room temperature for 1.5 hours) with sh-Control and sh-CLIC4 transfected HeLa cells.



human heart tissue were subjected to SDS PAGE followed by western blot with 66343-1-Ig (CLIC4 Antibody) at dilution of 1:2000 incubated at room temperature for 1.5 hours.



Immunohistochemical analysis of paraffin-embedded human heart tissue slide using 66343-1-Ig (CLIC4 Antibody) at dilution of 1:200 (under 10x lens).



Immunohistochemical analysis of paraffin-embedded human heart tissue slide using 66343-1-Ig (CLIC4 Antibody) at dilution of 1:200 (under 40x lens).