

For Research Use Only

# ASNA1 Monoclonal antibody

Catalog Number: 66346-1-Ig



## Basic Information

<b>Catalog Number:</b> 66346-1-Ig	<b>GenBank Accession Number:</b> BC002651	<b>Purification Method:</b> Protein A purification
<b>Size:</b> 150ul , Concentration: 1300 µg/ml by Nanodrop and 1000 µg/ml by Bradford method using BSA as the standard;	<b>GeneID (NCBI):</b> 439	<b>CloneNo.:</b> 1B7C11
<b>Source:</b> Mouse	<b>Full Name:</b> arsA arsenite transporter, ATP- binding, homolog 1 (bacterial)	<b>Recommended Dilutions:</b> WB 1:5000-1:50000 IHC 1:50-1:500 IF 1:200-1:800
<b>Isotype:</b> IgG1	<b>Calculated MW:</b> 38.7 kDa	
<b>Immunogen Catalog Number:</b> AG7936	<b>Observed MW:</b> 37-41 kDa	

## Applications

### Tested Applications:

IF, IHC, WB, ELISA

### Species Specificity:

human, rat, pig, mouse

**Note-IHC: suggested antigen retrieval with TE buffer pH 9.0; (\*) Alternatively, antigen retrieval may be performed with citrate buffer pH 6.0**

### Positive Controls:

WB : Neuro-2a cells, HeLa cells, rat brain tissue, fetal human brain tissue, pig brain tissue, HEK-293 cells, rabbit brain tissue, mouse brain tissue

IHC : human lung cancer tissue,

IF : HEK-293 cells,

## Background Information

ASNA1 (also known as TRC40) is a highly conserved ATPase involved in efflux of arsenite and antimonite. Reduced ASNA1 expression is associated with significant inhibition of cell growth, increased apoptosis and increased sensitivity to arsenite. Thus ASNA1 is proposed to be a target to overcome resistance to cancer chemotherapy. In addition, ASNA1 has been identified as an ER targeting factor for tail-anchored proteins in the posttranslational membrane insertion pathway.

## Storage

### Storage:

Store at -20°C. Stable for one year after shipment.

### Storage Buffer:

PBS with 0.02% sodium azide and 50% glycerol pH 7.3.

Aliquoting is unnecessary for -20°C storage

\*\*\* 20ul sizes contain 0.1% BSA

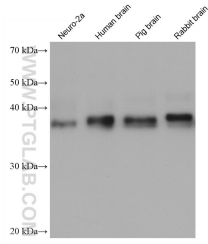
For technical support and original validation data for this product please contact:

T: 1 (888) 4PTGLAB (1-888-478-4522) (toll free in USA), or 1(312) 455-8498 (outside USA)

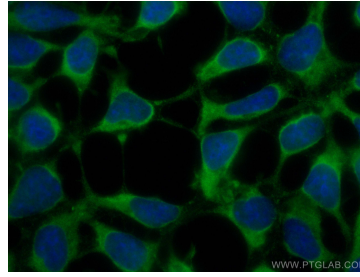
E: proteintech@ptglab.com  
W: ptglab.com

This product is exclusively available under Proteintech Group brand and is not available to purchase from any other manufacturer.

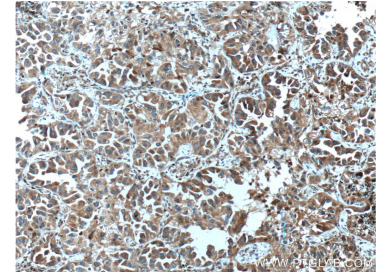
## Selected Validation Data



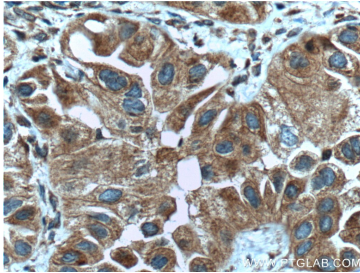
Various lysates were subjected to SDS PAGE followed by western blot with 66346-1-Ig (ASNA1 antibody) at dilution of 1:10000 incubated at room temperature for 1.5 hours.



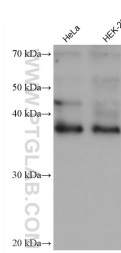
Immunofluorescent analysis of (-20°C Ethanol) fixed HEK-293 cells using ASNA1 antibody (66346-1-Ig, Clone: 1B7C11) at dilution of 1:400 and CoraLite®488-Conjugated AffiniPure Goat Anti-Mouse IgG(H+L).



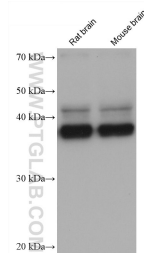
Immunohistochemical analysis of paraffin-embedded human lung cancer tissue slide using 66346-1-Ig (ASNA1 Antibody) at dilution of 1:200 (under 10x lens). Heat mediated antigen retrieval with Tris-EDTA buffer (pH 9.0).



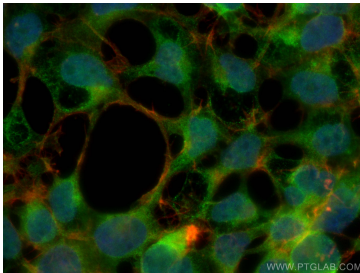
Immunohistochemical analysis of paraffin-embedded human lung cancer tissue slide using 66346-1-Ig (ASNA1 Antibody) at dilution of 1:200 (under 40x lens). Heat mediated antigen retrieval with Tris-EDTA buffer (pH 9.0).



Various lysates were subjected to SDS PAGE followed by western blot with 66346-1-Ig (ASNA1 antibody) at dilution of 1:10000 incubated at room temperature for 1.5 hours.



Various lysates were subjected to SDS PAGE followed by western blot with 66346-1-Ig (ASNA1 antibody) at dilution of 1:10000 incubated at room temperature for 1.5 hours.



Immunofluorescent analysis of (4% PFA) fixed HEK-293 cells using ASNA1 antibody (66346-1-Ig, Clone: 1B7C11) at dilution of 1:400 and CoraLite®488-Conjugated AffiniPure Goat Anti-Mouse IgG(H+L), CL594-Phalloidin (red).