

For Research Use Only

ASNA1 Monoclonal antibody, PBS Only (Capture)

Catalog Number: 66346-1-PBS



Basic Information

Catalog Number: 66346-1-PBS	GenBank Accession Number: BC002651	Purification Method: Protein A purification
Size: 100ug , Concentration: 1mg/ml by Nanodrop;	GeneID (NCBI): 439	CloneNo.: 1B7C11
Source: Mouse	UNIPROT ID: O43681	
Isotype: IgG1	Full Name: arsA arsenite transporter, ATP-binding, homolog 1 (bacterial)	
Immunogen Catalog Number: AG7936	Calculated MW: 38.7 kDa	
	Observed MW: 37-41 kDa	

Applications

Tested Applications:
WB, IHC, IF/ICC, Cytometric bead array, Indirect ELISA

Species Specificity:
human, mouse, rat, pig, chicken

Product Information

66346-1-PBS targets ASNA1 as part of a matched antibody pair.

MP50801-1: 66346-1-PBS capture and 66346-2-PBS detection (validated in Cytometric bead array)

Unconjugated mouse monoclonal antibody pair in PBS only (BSA and azide free) storage buffer at a concentration of 1 mg/mL, ready for conjugation.

This conjugation ready format makes antibodies ideal for use in many applications including: ELISAs, multiplex assays requiring matched pairs, mass cytometry, and multiplex imaging applications. Antibody use should be optimized by the end user for each application and assay.

Background Information

ASNA1 (also known as TRC40) is a highly conserved ATPase involved in efflux of arsenite and antimonite. Reduced ASNA1 expression is associated with significant inhibition of cell growth, increased apoptosis and increased sensitivity to arsenite. Thus ASNA1 is proposed to be a target to overcome resistance to cancer chemotherapy. In addition, ASNA1 has been identified as an ER targeting factor for tail-anchored proteins in the posttranslational membrane insertion pathway.

Storage

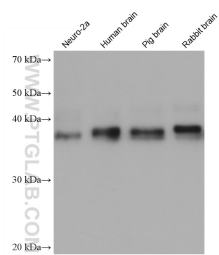
Storage:
Store at -80°C.

Storage Buffer:
PBS Only

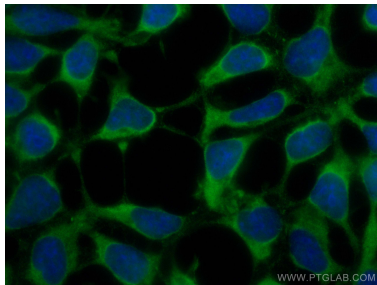
For technical support and original validation data for this product please contact:
T: 1 (888) 4PTGLAB (1-888-478-4522) (toll free in USA), or 1(312) 455-8498 (outside USA)
E: proteintech@ptglab.com
W: ptglab.com

This product is exclusively available under Proteintech Group brand and is not available to purchase from any other manufacturer.

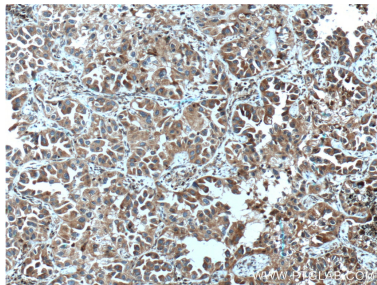
Selected Validation Data



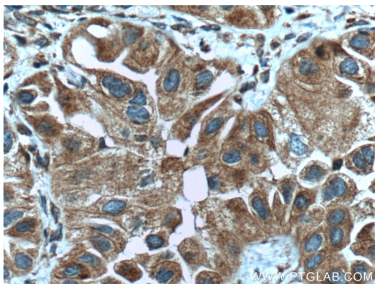
Various lysates were subjected to SDS PAGE followed by western blot with 66346-1-Ig (ASNA1 antibody) at dilution of 1:10000 incubated at room temperature for 1.5 hours. This data was developed using the same antibody clone with 66346-1-PBS in a different storage buffer formulation.



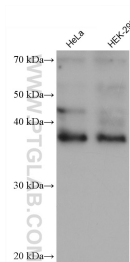
Immunofluorescent analysis of (-20°C Ethanol) fixed HEK-293 cells using ASNA1 antibody (66346-1-Ig, Clone: 1B7C11) at dilution of 1:400 and CoraLite®488-Conjugated AffiniPure Goat Anti-Mouse IgG(H+L). This data was developed using the same antibody clone with 66346-1-PBS in a different storage buffer formulation.



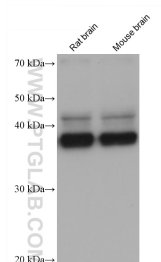
Immunohistochemical analysis of paraffin-embedded human lung cancer tissue slide using 66346-1-Ig (ASNA1 Antibody) at dilution of 1:200 (under 10x lens). Heat mediated antigen retrieval with Tris-EDTA buffer (pH 9.0). This data was developed using the same antibody clone with 66346-1-PBS in a different storage buffer formulation.



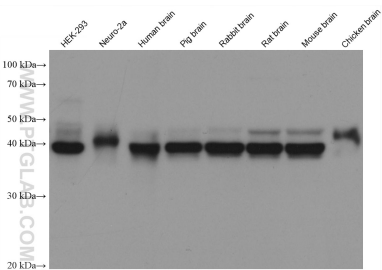
Immunohistochemical analysis of paraffin-embedded human lung cancer tissue slide using 66346-1-Ig (ASNA1 Antibody) at dilution of 1:200 (under 40x lens). Heat mediated antigen retrieval with Tris-EDTA buffer (pH 9.0). This data was developed using the same antibody clone with 66346-1-PBS in a different storage buffer formulation.



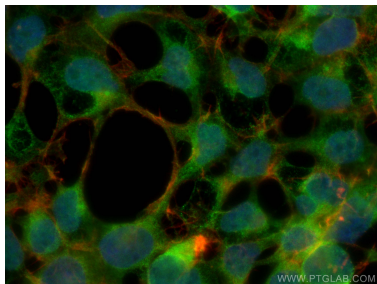
Various lysates were subjected to SDS PAGE followed by western blot with 66346-1-Ig (ASNA1 antibody) at dilution of 1:10000 incubated at room temperature for 1.5 hours. This data was developed using the same antibody clone with 66346-1-PBS in a different storage buffer formulation.



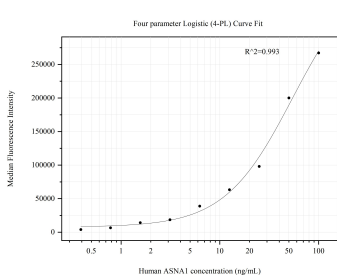
Various lysates were subjected to SDS PAGE followed by western blot with 66346-1-Ig (ASNA1 antibody) at dilution of 1:10000 incubated at room temperature for 1.5 hours. This data was developed using the same antibody clone with 66346-1-PBS in a different storage buffer formulation.



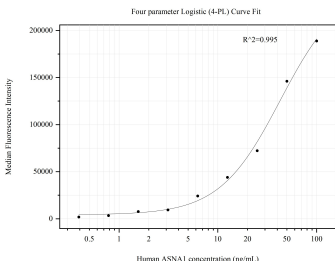
Various lysates were subjected to SDS PAGE followed by western blot with 66346-1-Ig (ASNA1 antibody) at dilution of 1:10000 incubated at room temperature for 1.5 hours. This data was developed using the same antibody clone with 66346-1-PBS in a different storage buffer formulation.



Immunofluorescent analysis of (4% PFA) fixed HEK-293 cells using ASNA1 antibody (66346-1-Ig, Clone: 1B7C11) at dilution of 1:400 and CoraLite®488-Conjugated AffiniPure Goat Anti-Mouse IgG(H+L), CL594-Phalloidin (red). This data was developed using the same antibody clone with 66346-1-PBS in a different storage buffer formulation.



Cytometric bead array standard curve of MP50801-1, ASNA1 Monoclonal Matched Antibody Pair, PBS Only. Capture antibody: 66346-1-PBS. Detection antibody: 66346-2-PBS. Standard:Ag7936. Range: 0.391-100 ng/mL



Cytometric bead array standard curve of MP50801-2, ASNA1 Monoclonal Matched Antibody Pair, PBS Only. Capture antibody: 66346-1-PBS. Detection antibody: 66346-3-PBS. Standard:null. Range: null.