

For Research Use Only

SIX2 Monoclonal antibody, PBS Only

Catalog Number: 66347-1-PBS



Basic Information

Catalog Number: 66347-1-PBS	GenBank Accession Number: BC024033	Purification Method: Protein A purification
Size: 100ug , Concentration: 1 mg/ml by Nanodrop;	GeneID (NCBI): 10736	CloneNo.: 1F9G11
Source: Mouse	UNIPROT ID: Q9NPC8	
Isotype: IgG2b	Full Name: SIX homeobox 2	
Immunogen Catalog Number: AG2124	Calculated MW: 291 aa, 32 kDa	
	Observed MW: 37 kDa	

Applications

Tested Applications:
WB, IHC, Indirect ELISA

Species Specificity:
human, rat, Canine, mouse, pig

Background Information

The SIX proteins (sine oculis) are a family of homeodomain transcription factors that share a conserved DNA binding domain. Six members (Six1-Six6) of the Six gene family have been identified in mice and humans. SIX2, containing one homeobox DNA-binding domain, is highly expressed in fetal tissues but expression is limited in adult tissues. SIX2 may be involved in limb tendon and ligament development[PMID:21420949]. It has been previously shown that SIX2 is expressed in developing mesenchymal tissue including head and urogenital system at the time of overt midfacial and renal differentiation[PMID: 22282599].

Storage

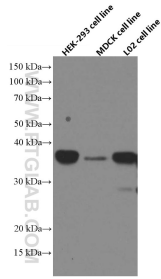
Storage:
Store at -80°C.

Storage Buffer:
PBS Only

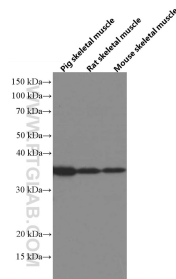
For technical support and original validation data for this product please contact:
T: 1 (888) 4PTGLAB (1-888-478-4522) (toll free in USA), or 1(312) 455-8498 (outside USA) E: proteintech@ptglab.com
W: ptglab.com

This product is exclusively available under Proteintech Group brand and is not available to purchase from any other manufacturer.

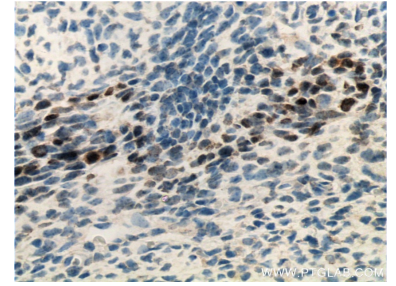
Selected Validation Data



Various cells were subjected to SDS PAGE followed by western blot with 66347-1-Ig (SIX2 antibody) at dilution of 1:3000 incubated at room temperature for 1.5 hours. This data was developed using the same antibody clone with 66347-1-PBS in a different storage buffer formulation.



Various tissues were subjected to SDS PAGE followed by western blot with 66347-1-Ig (SIX2 antibody) at dilution of 1:3000 incubated at room temperature for 1.5 hours. This data was developed using the same antibody clone with 66347-1-PBS in a different storage buffer formulation.



Immunohistochemical analysis of paraffin-embedded mouse embryo tissue slide using 66347-1-Ig (SIX2 antibody) at dilution of 1:200 (under 40x lens). Heat mediated antigen retrieval with Tris-EDTA buffer (pH 9.0). This data was developed using the same antibody clone with 66347-1-PBS in a different storage buffer formulation.