

For Research Use Only

# CBLB Monoclonal antibody

Catalog Number: 66353-1-Ig 1 Publications



## Basic Information

Catalog Number:	GenBank Accession Number:	Purification Method:
66353-1-Ig	BC032851	Protein A purification
Size:	GeneID (NCBI):	CloneNo.:
150ul , Concentration: 1500 µg/ml by 868		2D3A2
Nanodrop and 1000 µg/ml by Bradford	Full Name:	Recommended Dilutions:
method using BSA as the standard;	Cas-Br-M (murine) ecotropic retroviral	WB 1:500-1:2000
Source:	transforming sequence b	IHC 1:100-1:400
Mouse	Calculated MW:	IF 1:50-1:500
Isotype:	982 aa, 109 kDa	
IgG3	Observed MW:	
Immunogen Catalog Number:	110 kDa	
AG18757		

## Applications

Tested Applications:	Positive Controls:
IF, IHC, WB, ELISA	WB : RAW 264.7 cells, rat heart tissue
Cited Applications:	IHC : human heart tissue, human testis tissue
IF, IHC, WB	IF : RAW 264.7 cells,
Species Specificity:	
human, mouse, pig, rat	
Cited Species:	
human, mouse	
<b>Note-IHC: suggested antigen retrieval with TE buffer pH 9.0; (*) Alternatively, antigen retrieval may be performed with citrate buffer pH 6.0</b>	

## Background Information

CBLB(E3 ubiquitin-protein ligase CBL-B) is also known as RNF56 and plays a necessary role to prevent the inappropriate activation of NF- $\kappa$ B in response to lipopolysaccharide and to polymicrobial sepsis. CBLB can be phosphorylated on tyrosine and serine residues upon TCR or BCR activation, and upon various types of cell stimulation. It also has a crucial role in the prevention of chronic inflammation and autoimmunity. This protein has 3 isoforms produced by alternative splicing.

## Notable Publications

Author	Pubmed ID	Journal	Application
Haijun Bao	38105184	J Exp Clin Cancer Res	WB, IHC, IF

## Storage

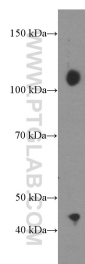
**Storage:**  
Store at -20°C. Stable for one year after shipment.  
**Storage Buffer:**  
PBS with 0.02% sodium azide and 50% glycerol pH 7.3.  
Aliquoting is unnecessary for -20°C storage

\*\*\* 20ul sizes contain 0.1% BSA

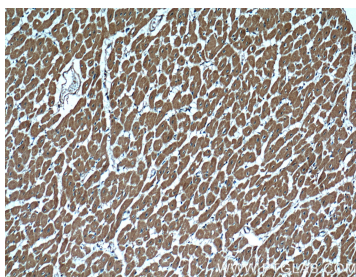
For technical support and original validation data for this product please contact:  
T: 1 (888) 4PTGLAB (1-888-478-4522) (toll free in USA), or 1(312) 455-8498 (outside USA)  
E: proteintech@ptglab.com  
W: ptglab.com

This product is exclusively available under Proteintech Group brand and is not available to purchase from any other manufacturer.

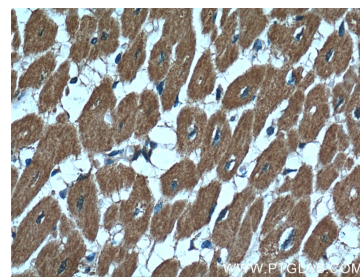
## Selected Validation Data



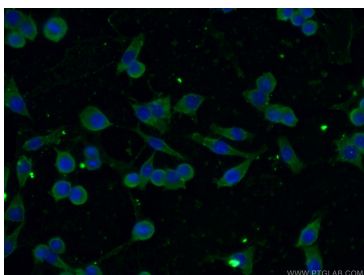
RAW 264.7 cells were subjected to SDS PAGE followed by western blot with 66353-1-Ig (CBLB Antibody) at dilution of 1:1000 incubated at room temperature for 1.5 hours.



Immunohistochemical analysis of paraffin-embedded human heart tissue slide using 66353-1-Ig (CBLB Antibody) at dilution of 1:200 (under 10x lens).



Immunohistochemical analysis of paraffin-embedded human heart tissue slide using 66353-1-Ig (CBLB Antibody) at dilution of 1:200 (under 40x lens).



Immunofluorescent analysis of (-20°C Ethanol ) fixed RAW 264.7 cells using 66353-1-Ig(CBLB antibody) at dilution of 1:100 and Alexa Fluor 488-conjugated AffiniPure Goat Anti-Mouse IgG(H+L).