

For Research Use Only

BRE Monoclonal antibody, PBS Only

Catalog Number: 66356-1-PBS



Basic Information

Catalog Number:

66356-1-PBS

Size:

100ug , Concentration: 1 mg/ml by Nanodrop;

Source:

Mouse

Isotype:

IgG2a

Immunogen Catalog Number:

AG2256

GenBank Accession Number:

BC001251

GeneID (NCBI):

9577

UNIPROT ID:

Q9NXR7

Full Name:

brain and reproductive organ-expressed (TNFRSF1A modulator)

Calculated MW:

383 aa, 44 kDa

Observed MW:

42-47 kDa

Purification Method:

Protein A purification

CloneNo.:

2E5A5

Applications

Tested Applications:

WB, IF, IHC, Indirect ELISA

Species Specificity:

human, rat, mouse

Background Information

BRE, also named as BRCC45, is a death receptor-associated antiapoptotic protein, which is also involved in DNA-damage repair, and K63-specific deubiquitination. BRE and its XIAP-sustaining mechanism could represent novel targets for anti-cancer therapy. BRE may regulate TNF- α signaling through its interactions with TNFRSF1A. It plays a role in homeostasis or cellular differentiation in cells of neural, epithelial and germline origins. BRE gene has four isoforms with MW 42-47 kDa.

Storage

Storage:

Store at -80°C.

Storage Buffer:

PBS Only

For technical support and original validation data for this product please contact:

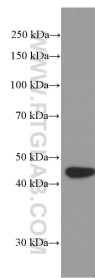
T: 1 (888) 4PTGLAB (1-888-478-4522) (toll free in USA), or 1(312) 455-8498 (outside USA)

E: proteintech@ptglab.com

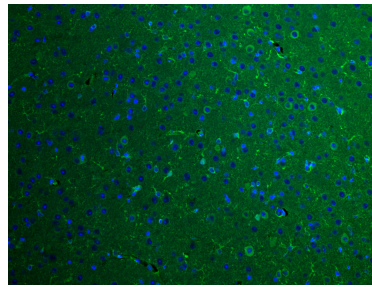
W: ptglab.com

This product is exclusively available under Proteintech Group brand and is not available to purchase from any other manufacturer.

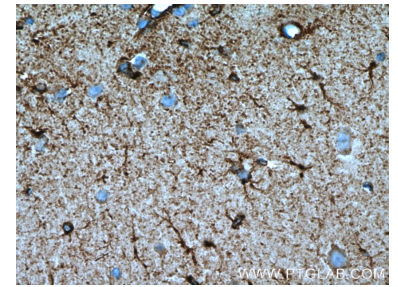
Selected Validation Data



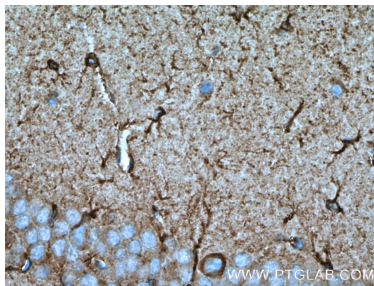
fetal human brain tissue were subjected to SDS PAGE followed by western blot with 66356-1-Ig (BRE Antibody) at dilution of 1:1000 incubated at room temperature for 1.5 hours. This data was developed using the same antibody clone with 66356-1-PBS in a different storage buffer formulation.



Immunofluorescent analysis of (4% PFA) fixed mouse brain tissue using BRE antibody (66356-1-Ig, Clone: 2E5A5) at dilution of 1:200 and CoraLite®488-Conjugated AffiniPure Goat Anti-Mouse IgG(H+L). This data was developed using the same antibody clone with 66356-1-PBS in a different storage buffer formulation.



Immunohistochemical analysis of paraffin-embedded mouse brain tissue slide using 66356-1-Ig (BRE Antibody) at dilution of 1:200 (under 10x lens). Heat mediated antigen retrieval with Tris-EDTA buffer (pH 9.0). This data was developed using the same antibody clone with 66356-1-PBS in a different storage buffer formulation.



Immunohistochemical analysis of paraffin-embedded mouse brain tissue slide using 66356-1-Ig (BRE Antibody) at dilution of 1:200 (under 40x lens). Heat mediated antigen retrieval with Tris-EDTA buffer (pH 9.0). This data was developed using the same antibody clone with 66356-1-PBS in a different storage buffer formulation.