

For Research Use Only

# Tubulin Beta Class V Monoclonal antibody

Catalog Number: 66362-1-Ig **6 Publications**



## Basic Information

Catalog Number: 66362-1-Ig	GenBank Accession Number: NM_032525	Purification Method: Protein G purification
Size: 150ul , Concentration: 1000 ug/ml by Nanodrop;	GeneID (NCBI): 84617	CloneNo.: 1D7B9
Source: Mouse	Full Name: tubulin, beta 6	Recommended Dilutions: WB 1:500-1:2000 IHC 1:50-1:500 IF/ICC 1:50-1:500
Isotype: IgG1	Calculated MW: 50 kDa Observed MW: 50 kDa	

## Applications

Tested Applications: WB, IHC, IF/ICC, ELISA	Positive Controls:
Cited Applications: WB, IHC	WB : HeLa cells, human testis tissue, NCCIT cell, NIH/3T3 cells
Species Specificity: human, mouse, Canine	IHC : human lung cancer tissue, human breast cancer tissue
Cited Species: human, mouse, rat	IF/ICC : MDCK cells,
<b>Note-IHC: suggested antigen retrieval with TE buffer pH 9.0; (*) Alternatively, antigen retrieval may be performed with citrate buffer pH 6.0</b>	

## Background Information

Tubulin beta class V, encoded by TUBB6, is an isotype of beta tubulin, the major component of microtubule. It is widely expressed in many tissues. In normal tissues, tubulin beta class V is focally expressed in ciliary structure, while in cancer tissues it exhibited a diffuse staining pattern. The alterations of its expression in tumors suggest tubulin beta class V may be used as a biomarker for some solid tumors.

## Notable Publications

Author	Pubmed ID	Journal	Application
Fu Chen	32976883	Life Sci	WB
Ling You	36186576	Mediators Inflamm	WB
Torben J Hausrat	32293117	Dev Neurobiol	WB

## Storage

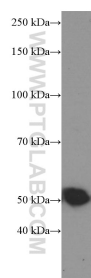
Storage:  
Store at -20°C. Stable for one year after shipment.  
Storage Buffer:  
PBS with 0.02% sodium azide and 50% glycerol  
Aliquoting is unnecessary for -20°C storage

\*\*\* 20ul sizes contain 0.1% BSA

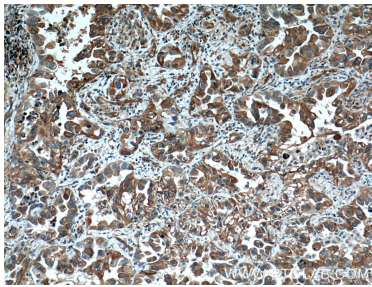
For technical support and original validation data for this product please contact:  
T: 1 (888) 4PTGLAB (1-888-478-4522) (toll free in USA), or 1(312) 455-8498 (outside USA)  
E: [proteintech@ptglab.com](mailto:proteintech@ptglab.com)  
W: [ptglab.com](http://ptglab.com)

This product is exclusively available under Proteintech Group brand and is not available to purchase from any other manufacturer.

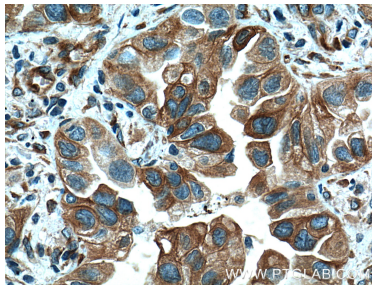
## Selected Validation Data



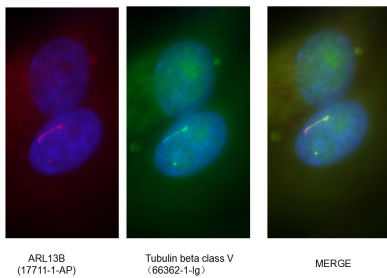
HeLa cells were subjected to SDS PAGE followed by western blot with 66362-1-Ig (Tubulin beta class V Antibody) at dilution of 1:1000 incubated at room temperature for 1.5 hours.



Immunohistochemical analysis of paraffin-embedded human lung cancer tissue slide using 66362-1-Ig (Tubulin beta class V Antibody) at dilution of 1:200 (under 10x lens). Heat mediated antigen retrieval with Tris-EDTA buffer (pH 9.0).



Immunohistochemical analysis of paraffin-embedded human lung cancer tissue slide using 66362-1-Ig (Tubulin beta class V Antibody) at dilution of 1:200 (under 40x lens). Heat mediated antigen retrieval with Tris-EDTA buffer (pH 9.0).



Immunofluorescent analysis of (4% PFA ) fixed MDCK cells using 66362-1-Ig(Tubulin beta class V antibody) at dilution of 1:100 and Alexa Fluor 488-conjugated Goat Anti-Mouse IgG(H+L).