

For Research Use Only

D2HGDH Monoclonal antibody, PBS Only



Catalog Number: 66364-1-PBS

Basic Information

Catalog Number: 66364-1-PBS	GenBank Accession Number: BC036604	Purification Method: Protein G purification
Size: 100ug, Concentration: 1mg/ml by Nanodrop;	GeneID (NCBI): 728294	CloneNo.: 1E9B3
Source: Mouse	UNIPROT ID: Q8N465	
Isotype: IgG1	Full Name: D-2-hydroxyglutarate dehydrogenase	
Immunogen Catalog Number: AG5036	Calculated MW: 521 aa, 56 kDa	
	Observed MW: 56 kDa	

Applications

Tested Applications:
Indirect ELISA, IF/ICC, IHC, WB

Species Specificity:
rat, mouse, human

Background Information

D2HGDH(D-2-hydroxyglutarate dehydrogenase, mitochondrial) is also named as D2HGD and belongs to the FAD-binding oxidoreductase/transferase type 4 family. It catalyzes the oxidation of D-2-hydroxyglutarate to alpha-ketoglutarate. Defects in D2HGDH are the cause of D-2-hydroxyglutaric aciduria type 1 (D2HGA1).

Storage

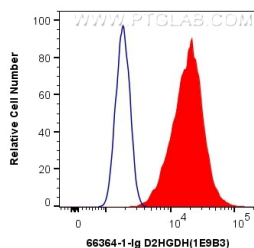
Storage:
Store at -80°C.

Storage Buffer:
PBS Only

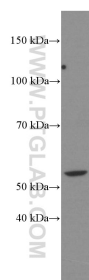
For technical support and original validation data for this product please contact:
T: 1 (888) 4PTGLAB (1-888-478-4522) (toll free in USA), or 1(312) 455-8498 (outside USA)
E: proteintech@ptglab.com
W: ptglab.com

This product is exclusively available under Proteintech Group brand and is not available to purchase from any other manufacturer.

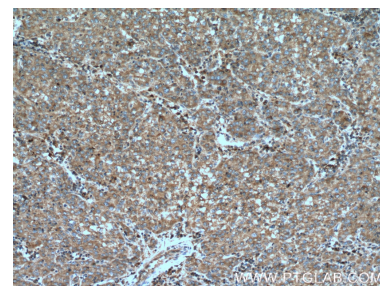
Selected Validation Data



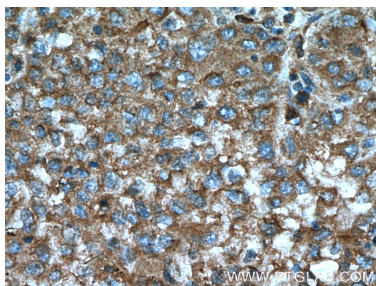
1X10⁶ HepG2 cells were intracellularly stained with 0.4 ug Anti-Human D2HGDH (66364-1-Ig, Clone:1E9B3) and CoraLite®488-Conjugated AffiniPure Goat Anti-Mouse IgG(H+L) at dilution 1:1000 (red), or 0.4 ug Control Antibody. Cells were fixed with 4% PFA and permeabilized with Flow Cytometry Perm Buffer (PF00011-C). This data was developed using the same antibody clone with 66364-1-PBS in a different storage buffer formulation.



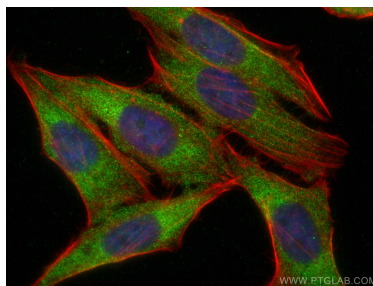
NIH/3T3 cells were subjected to SDS PAGE followed by western blot with 66364-1-Ig (D2HGDH Antibody) at dilution of 1:4000 incubated at room temperature for 1.5 hours. This data was developed using the same antibody clone with 66364-1-PBS in a different storage buffer formulation.



Immunohistochemical analysis of paraffin-embedded human liver cancer tissue slide using 66364-1-Ig (D2HGDH Antibody) at dilution of 1:200 (under 10x lens). Heat mediated antigen retrieval with Tris-EDTA buffer (pH 9.0). This data was developed using the same antibody clone with 66364-1-PBS in a different storage buffer formulation.



Immunohistochemical analysis of paraffin-embedded human liver cancer tissue slide using 66364-1-Ig (D2HGDH Antibody) at dilution of 1:200 (under 40x lens). Heat mediated antigen retrieval with Tris-EDTA buffer (pH 9.0). This data was developed using the same antibody clone with 66364-1-PBS in a different storage buffer formulation.



Immunofluorescent analysis of (4% PFA) fixed HepG2 cells using D2HGDH antibody (66364-1-Ig, Clone: 1E9B3) at dilution of 1:800 and CoraLite®488-Conjugated AffiniPure Goat Anti-Mouse IgG(H+L), CL594-phalloidin (red). This data was developed using the same antibody clone with 66364-1-PBS in a different storage buffer formulation.