

For Research Use Only

# ERp72 Monoclonal antibody

Catalog Number: 66365-1-Ig **6 Publications**



## Basic Information

<b>Catalog Number:</b> 66365-1-Ig	<b>GenBank Accession Number:</b> BC000425	<b>Purification Method:</b> Protein G purification
<b>Size:</b> 150ul , Concentration: 1000 ug/ml by Nanodrop;	<b>GeneID (NCBI):</b> 9601	<b>CloneNo.:</b> 1D5F3
<b>Source:</b> Mouse	<b>UNIPROT ID:</b> P13667	<b>Recommended Dilutions:</b> WB 1:2000-1:10000 IHC 1:250-1:1000
<b>Isotype:</b> IgG1	<b>Full Name:</b> protein disulfide isomerase family A, member 4	
<b>Immunogen Catalog Number:</b> AG6873	<b>Calculated MW:</b> 73 kDa	
	<b>Observed MW:</b> 72 kDa	

## Applications

<b>Tested Applications:</b> WB, IHC, ELISA	<b>Positive Controls:</b>
<b>Cited Applications:</b> WB, IF	<b>WB :</b> A431 cells, JAR cells, HEK-293 cells
<b>Species Specificity:</b> human	<b>IHC :</b> human liver cancer tissue,
<b>Cited Species:</b> human, mouse, rat	

**Note-IHC: suggested antigen retrieval with TE buffer pH 9.0; (\*) Alternatively, antigen retrieval may be performed with citrate buffer pH 6.0**

## Background Information

PDIA4 (Protein disulfide-isomerase A4) is also named ERP70, ERP72, and belongs to the protein disulfide isomerase family. It catalyzes the rearrangement of -S-S- bonds in proteins. ERp72 is a soluble protein localized in the ER lumen and contains the COOH-terminal retention signal, KEEL. There are 6 cysteine residues in the amino acid sequences of mouse and human ERp72. All of the cysteine residues occur in the internal thioredoxin motif, CGHC(PMID:15475357). The full-length protein has a signal peptide with 20 amino acids.

## Notable Publications

Author	Pubmed ID	Journal	Application
Wenjie Hu	34109212	Front Mol Biosci	IF
Jia Song	30606233	J Exp Clin Cancer Res	IF
Jing Liao	33813851	Hypertension	IF

## Storage

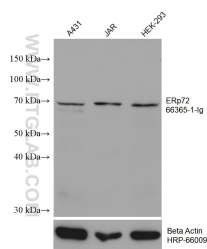
**Storage:**  
Store at -20°C. Stable for one year after shipment.  
**Storage Buffer:**  
PBS with 0.02% sodium azide and 50% glycerol pH 7.3.  
**Aliquoting is unnecessary for -20°C storage**

\*\*\* 20ul sizes contain 0.1% BSA

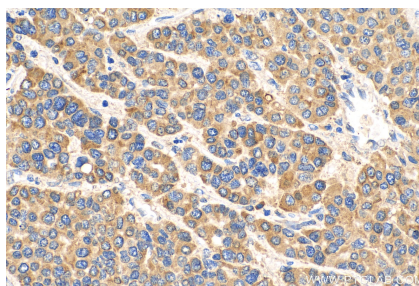
For technical support and original validation data for this product please contact:  
T: 1 (888) 4PTGLAB (1-888-478-4522) (toll free in USA), or 1(312) 455-8498 (outside USA)  
E: proteintech@ptglab.com  
W: ptglab.com

This product is exclusively available under Proteintech Group brand and is not available to purchase from any other manufacturer.

## Selected Validation Data



Various lysates were subjected to SDS PAGE followed by western blot with 66365-1-Ig (ERp72 antibody) at dilution of 1:4900 incubated at room temperature for 1.5 hours. The membrane was stripped and reblotted with HRP-conjugated Beta Actin Monoclonal antibody (HRP-66009) as loading control.



Immunohistochemical analysis of paraffin-embedded human liver cancer tissue slide using 66365-1-Ig (ERp72 antibody) at dilution of 1:500 (under 40x lens). Heat mediated antigen retrieval with Tris-EDTA buffer (pH 9.0).