

For Research Use Only

# ERp72 Monoclonal antibody, PBS Only



Catalog Number: 66365-1-PBS

## Basic Information

<b>Catalog Number:</b> 66365-1-PBS	<b>GenBank Accession Number:</b> BC000425	<b>Purification Method:</b> Protein G purification
<b>Size:</b> 100ug , Concentration: 1 mg/ml by Nanodrop;	<b>GeneID (NCBI):</b> 9601	<b>CloneNo.:</b> 1D5F3
<b>Source:</b> Mouse	<b>UNIPROT ID:</b> P13667	
<b>Isotype:</b> IgG1	<b>Full Name:</b> protein disulfide isomerase family A, member 4	
<b>Immunogen Catalog Number:</b> AG6873	<b>Calculated MW:</b> 73 kDa	
	<b>Observed MW:</b> 72 kDa	

## Applications

**Tested Applications:**  
WB, IHC, Indirect ELISA

**Species Specificity:**  
human

## Background Information

PDIA4 (Protein disulfide-isomerase A4) is also named ERP70, ERP72, and belongs to the protein disulfide isomerase family. It catalyzes the rearrangement of -S-S- bonds in proteins. ERp72 is a soluble protein localized in the ER lumen and contains the COOH-terminal retention signal, KEEL. There are 6 cysteine residues in the amino acid sequences of mouse and human ERp72. All of the cysteine residues occur in the internal thioredoxin motif, CGHC (PMID:15475357). The full-length protein has a signal peptide with 20 amino acids.

## Storage

**Storage:**  
Store at -80°C.

**Storage Buffer:**  
PBS Only

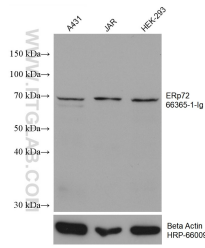
For technical support and original validation data for this product please contact:

T: 1 (888) 4PTGLAB (1-888-478-4522) (toll free in USA), or 1(312) 455-8498 (outside USA)

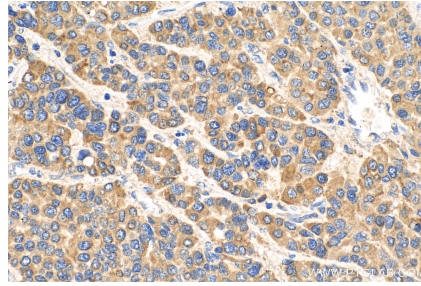
E: [proteintech@ptglab.com](mailto:proteintech@ptglab.com)  
W: [ptglab.com](http://ptglab.com)

**This product is exclusively available under Proteintech Group brand and is not available to purchase from any other manufacturer.**

## Selected Validation Data



Various lysates were subjected to SDS PAGE followed by western blot with 66365-1-Ig (ERp72 antibody) at dilution of 1:4900 incubated at room temperature for 1.5 hours. The membrane was stripped and reblotted with HRP-conjugated Beta Actin Monoclonal antibody (HRP-66009) as loading control. This data was developed using the same antibody clone with 66365-1-PBS in a different storage buffer formulation.



Immunohistochemical analysis of paraffin-embedded human liver cancer tissue slide using 66365-1-Ig (ERp72 antibody) at dilution of 1:500 (under 40x lens). Heat mediated antigen retrieval with Tris-EDTA buffer (pH 9.0). This data was developed using the same antibody clone with 66365-1-PBS in a different storage buffer formulation.