

For Research Use Only

MMP2 Monoclonal antibody

Catalog Number: 66366-1-Ig

Featured Product

41 Publications



Basic Information

Catalog Number: 66366-1-Ig	GenBank Accession Number: BC002576	Purification Method: Protein A purification
Size: 150ul , Concentration: 1100 µg/ml by Nanodrop and 1000 µg/ml by Bradford method using BSA as the standard;	GeneID (NCBI): 4313	CloneNo.: 2B10D1
Source: Mouse	Full Name: matrix metalloproteinase 2 (gelatinase A, 72kDa gelatinase, 72kDa type IV collagenase)	Recommended Dilutions: WB 1:1000-1:6000 IHC 1:150-1:600
Isotype: IgG1	Calculated MW: 72 kDa	
Immunogen Catalog Number: AG25039	Observed MW: 55-74 kDa	

Applications

Tested Applications:

IHC, WB, ELISA

Cited Applications:

IF, IHC, WB

Species Specificity:

human, rat, mouse, pig

Cited Species:

human, mouse, rat

Note-IHC: suggested antigen retrieval with TE buffer pH 9.0; (*) Alternatively, antigen retrieval may be performed with citrate buffer pH 6.0

Positive Controls:

WB : HepG2 cells, human placenta tissue, pig heart tissue, rat heart tissue, human heart tissue, MCF-7 cells

IHC : human breast cancer tissue,

Background Information

MMP2, also named as CLG4A, Gelatinase Am, TBE-1 and PEX, belongs to the peptidase M10A family. It is ubiquitous metalloproteinase that is involved in diverse functions such as remodeling of the vasculature, angiogenesis, tissue repair, tumor invasion, inflammation, and atherosclerotic plaque rupture. MMP2 contributes to myocardial oxidative stress by regulating the activity of GSK3beta. It cleaves GSK3beta in vitro. MMP2 can be cleaved into PEX chain (~60kd). Western blot analysis showed that the 72 kDa and 62 kDa proteinase activities were pro-MMP2 and the active enzyme, respectively (PMID:11112697).

Notable Publications

Author	Pubmed ID	Journal	Application
Wenjing Guo	33117682	Front Oncol	WB
Wei Zhou	34646828	Front Cell Dev Biol	WB
Yu-Feng Liu	34603071	Front Physiol	WB, IHC

Storage

Storage:

Store at -20°C. Stable for one year after shipment.

Storage Buffer:

PBS with 0.02% sodium azide and 50% glycerol pH 7.3.

Aliquoting is unnecessary for -20°C storage

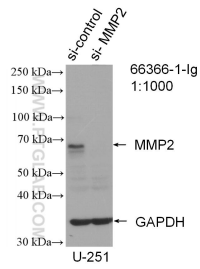
For technical support and original validation data for this product please contact:

T: 1 (888) 4PTGLAB (1-888-478-4522) (toll free in USA), or 1(312) 455-8498 (outside USA)

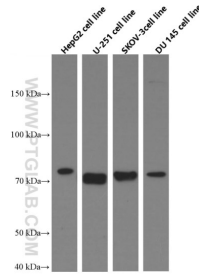
E: proteintech@ptglab.com
W: ptglab.com

This product is exclusively available under Proteintech Group brand and is not available to purchase from any other manufacturer.

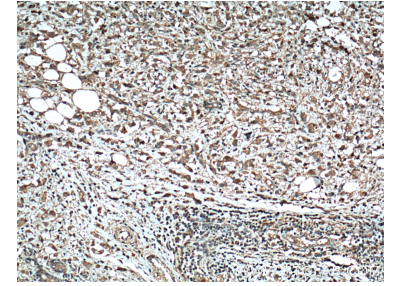
Selected Validation Data



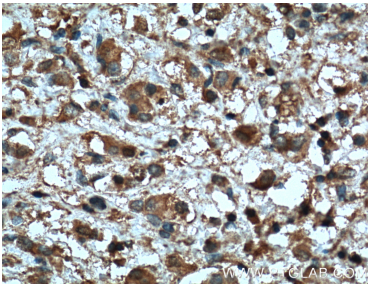
WB result of MMP2 antibody (66366-1-Ig; 1:1000; incubated at room temperature for 1.5 hours) with sh-Control and sh-MMP2 transfected U-251 cells.



Western blot analysis of MMP2 in various cell lines using Proteintech antibody 66366-1-Ig (MMP2 Antibody) at dilution of 1:3000 incubated at room temperature for 1.5 hours.



Immunohistochemical analysis of paraffin-embedded human breast cancer tissue slide using 66366-1-Ig (MMP2 antibody) at dilution of 1:300 (under 10x lens. Heat mediated antigen retrieval with Tris-EDTA buffer (pH 9.0).



Immunohistochemical analysis of paraffin-embedded human breast cancer tissue slide using 66366-1-Ig (MMP2 antibody) at dilution of 1:300 (under 40x lens. Heat mediated antigen retrieval with Tris-EDTA buffer (pH 9.0).