

For Research Use Only

# SKAP2 Monoclonal antibody

Catalog Number: 66367-1-Ig



## Basic Information

<b>Catalog Number:</b> 66367-1-Ig	<b>GenBank Accession Number:</b> BC036044	<b>Purification Method:</b> Protein G purification
<b>Size:</b> 150ul, Concentration: 1000 ug/ml by Nanodrop and 1000 ug/ml by Bradford method using BSA as the standard;	<b>GeneID (NCBI):</b> 8935	<b>CloneNo.:</b> 2G3G9
<b>Source:</b> Mouse	<b>UNIPROT ID:</b> O75563	<b>Recommended Dilutions:</b> WB 1:500-1:2000 IHC 1:50-1:500 IF/ICC 1:400-1:1600
<b>Isotype:</b> IgG1	<b>Full Name:</b> src kinase associated phosphoprotein 2	
<b>Immunogen Catalog Number:</b> AG3615	<b>Calculated MW:</b> 41 kDa	
	<b>Observed MW:</b> 55 kDa	

## Applications

**Tested Applications:**  
WB, IHC, IF/ICC, ELISA

**Species Specificity:**  
human, pig, rat, mouse

**Note-IHC: suggested antigen retrieval with TE buffer pH 9.0; (\*) Alternatively, antigen retrieval may be performed with citrate buffer pH 6.0**

**Positive Controls:**

**WB :** RAW 264.7 cells, human spleen tissue, pig liver tissue

**IHC :** human colon cancer tissue,

**IF/ICC :** NIH/3T3 cells,

## Background Information

SKAP2 (src kinase associated phosphoprotein 2), also named PRAP, contains PH domain and SH3 domain. It is localized in cytoplasm and was expressed in ubiquitously in various tissues including lung, skeletal muscle, and spleen, but not detectable in thymus and T cell lymphoma cells. SKAP2 may negatively regulate alpha-synuclein phosphorylation following cell stress. SKAP2 may be involved in B-cell and macrophage adhesion processes by coupling the B-cell receptor (BCR) to integrin activation.

## Storage

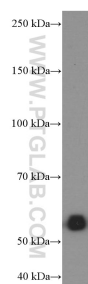
**Storage:**  
Store at -20°C. Stable for one year after shipment.  
**Storage Buffer:**  
PBS with 0.02% sodium azide and 50% glycerol pH 7.3.  
**Aliquoting is unnecessary for -20°C storage**

\*\*\* 20ul sizes contain 0.1% BSA

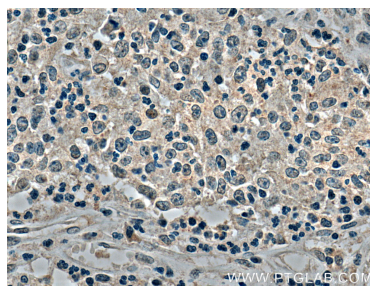
For technical support and original validation data for this product please contact:  
T: 1 (888) 4PTGLAB (1-888-478-4522) (toll free in USA), or 1(312) 455-8498 (outside USA)  
E: [proteintech@ptglab.com](mailto:proteintech@ptglab.com)  
W: [ptglab.com](http://ptglab.com)

This product is exclusively available under Proteintech Group brand and is not available to purchase from any other manufacturer.

## Selected Validation Data



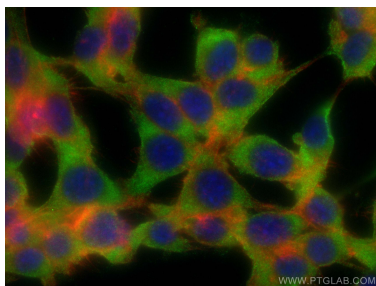
RAW 264.7 cells were subjected to SDS PAGE followed by western blot with 66367-1-Ig (SKAP2 Antibody) at dilution of 1:1000 incubated at room temperature for 1.5 hours.



Immunohistochemical analysis of paraffin-embedded human colon cancer tissue slide using 66367-1-Ig (SKAP2 Antibody) at dilution of 1:200 (under 40x lens). Heat mediated antigen retrieval with Tris-EDTA buffer (pH 9.0).



Immunohistochemical analysis of paraffin-embedded human colon cancer tissue slide using 66367-1-Ig (SKAP2 Antibody) at dilution of 1:200 (under 10x lens). Heat mediated antigen retrieval with Tris-EDTA buffer (pH 9.0).



Immunofluorescent analysis of (-20°C Ethanol) fixed NIH/3T3 cells using SKAP2 antibody (66367-1-Ig, Clone: 2G3G9) at dilution of 1:800 and CoraLite®488-Conjugated Goat Anti-Mouse IgG(H+L), CL594-phalloidin (red).