

For Research Use Only

PGRMC1 Monoclonal antibody

Catalog Number: 66372-1-Ig

Featured Product

1 Publications



Basic Information

Catalog Number: 66372-1-Ig	GenBank Accession Number: BC034238	Purification Method: Protein G purification
Size: 150ul, Concentration: 1400 ug/ml by Nanodrop and 1000 ug/ml by Bradford method using BSA as the standard;	GeneID (NCBI): 10857	CloneNo.: 1C10D11
Source: Mouse	UNIPROT ID: O00264	Recommended Dilutions: WB 1:5000-1:50000 IHC 1:50-1:500 IF-P 1:200-1:800 IF/ICC 1:1000-1:4000
Isotype: IgG1	Full Name: progesterone receptor membrane component 1	
Immunogen Catalog Number: AG3643	Calculated MW: 195 aa, 22 kDa	
	Observed MW: 25-27 kDa	

Applications

Tested Applications: WB, IHC, IF/ICC, IF-P, ELISA	Positive Controls:
Cited Applications: WB, IF	WB : A549 cells, fetal human brain tissue, MCF-7 cells, NIH/3T3 cells, HEK-293 cells, HeLa cells, Jurkat cells, K-562 cells, pig brain tissue, rat brain tissue, mouse brain tissue
Species Specificity: human, mouse, rat, pig	IHC : human ovary tumor tissue, human lung cancer tissue
Cited Species: human	IF-P : human ovary tumor tissue,
Note-IHC: suggested antigen retrieval with TE buffer pH 9.0; (*) Alternatively, antigen retrieval may be performed with citrate buffer pH 6.0	IF/ICC : A549 cells,

Background Information

Progesterone receptor membrane component 1 (PGRMC1) is a member of a multi-protein progesterone-binding complex. However, PGRMC1 shares homology with cytochrome b5-related proteins rather than hormone receptors (PMID: 18992768). It is a heme binding protein with binding sites for Src homology (SH2) and SH3 domain-containing proteins (PMID: 17583495). PGRMC1 is overexpressed in a variety of cancers, and thus represents an important biomarker for cancer progression and a potential target for anticancer drugs (PMID: 21730960). In nonmalignant tissues, PGRMC1 is highly expressed in the liver and kidney (PMID: 9705155; 20164297).

Notable Publications

Author	Pubmed ID	Journal	Application
Lihua Wang-Eckhardt	32924377	Biol Chem	IF, WB

Storage

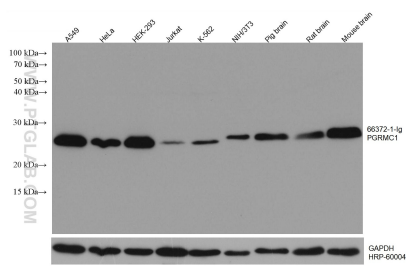
Storage:
Store at -20°C. Stable for one year after shipment.
Storage Buffer:
PBS with 0.02% sodium azide and 50% glycerol pH 7.3.
Aliquoting is unnecessary for -20°C storage

*** 20ul sizes contain 0.1% BSA

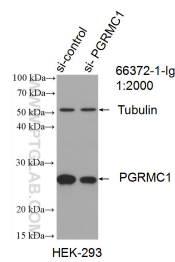
For technical support and original validation data for this product please contact:
T: 1 (888) 4PTGLAB (1-888-478-4522) (toll free in USA), or 1(312) 455-8498 (outside USA)
E: proteintech@ptglab.com
W: ptglab.com

This product is exclusively available under Proteintech Group brand and is not available to purchase from any other manufacturer.

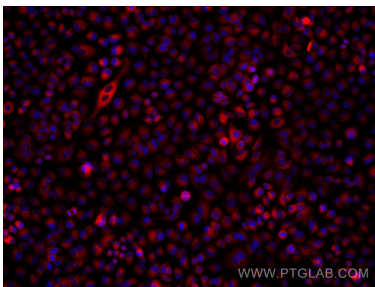
Selected Validation Data



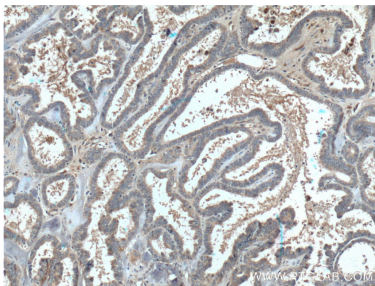
Various lysates were subjected to SDS PAGE followed by western blot with 66372-1-Ig (PGRMC1 antibody) at dilution of 1:10000 incubated at room temperature for 1.5 hours. The membrane was stripped and reblotted with HRP-conjugated GAPDH Monoclonal antibody (HRP-60004) as loading control.



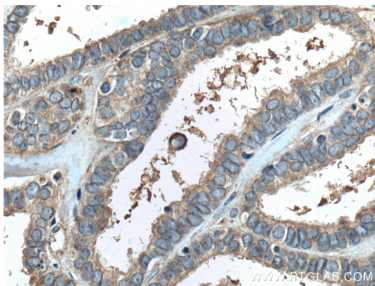
WB result of PGRMC1 antibody (66372-1-Ig; 1:2000; incubated at room temperature for 1.5 hours) with sh-Control and sh-PGRMC1 transfected HEK-293 cells.



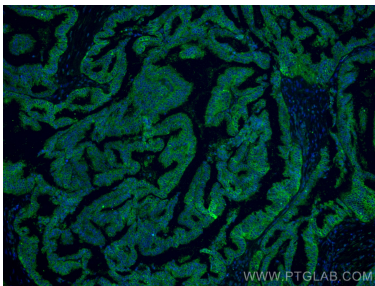
Immunofluorescent analysis of (4% PFA) fixed A549 cells using PGRMC1 antibody (66372-1-Ig, Clone: 1C10D11) at dilution of 1:2000 and Multi-rAb Coralite® Plus 594-Goat Anti-Mouse Recombinant Secondary Antibody (H+L) (Cat.NO. RGAM004).



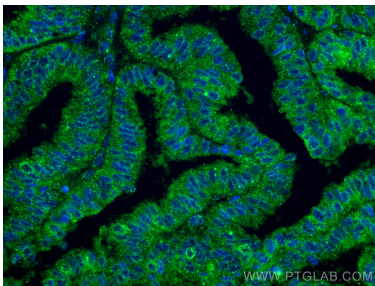
Immunohistochemical analysis of paraffin-embedded human ovary tumor tissue slide using 66372-1-Ig (PGRMC1 Antibody) at dilution of 1:400 (under 10x lens). Heat mediated antigen retrieval with Tris-EDTA buffer (pH 9.0).



Immunohistochemical analysis of paraffin-embedded human ovary tumor tissue slide using 66372-1-Ig (PGRMC1 Antibody) at dilution of 1:400 (under 40x lens). Heat mediated antigen retrieval with Tris-EDTA buffer (pH 9.0).



Immunofluorescent analysis of (4% PFA) fixed human ovary tumor tissue using PGRMC1 antibody (66372-1-Ig, Clone: 1C10D11) at dilution of 1:400 and Coralite®488-Conjugated AffiniPure Goat Anti-Mouse IgG(H+L).



Immunofluorescent analysis of (4% PFA) fixed human ovary tumor tissue using PGRMC1 antibody (66372-1-Ig, Clone: 1C10D11) at dilution of 1:400 and Coralite®488-Conjugated AffiniPure Goat Anti-Mouse IgG(H+L).