

For Research Use Only

G6PD Monoclonal antibody

Catalog Number: 66373-1-Ig

Featured Product

11 Publications



Basic Information

Catalog Number: 66373-1-Ig	GenBank Accession Number: BC000337	Purification Method: Protein A purification
Size: 150ul, Concentration: 2100 µg/ml by Nanodrop and 1000 µg/ml by Bradford method using BSA as the standard;	GeneID (NCBI): 2539	CloneNo.: 2A7B12
Source: Mouse	Full Name: glucose-6-phosphate dehydrogenase	Recommended Dilutions: WB 1:5000-1:50000 IHC 1:100-1:400 IF 1:50-1:200
Isotype: IgG2a	Calculated MW: 59 kDa	
Immunogen Catalog Number: AG21862	Observed MW: 60 kDa	

Applications

Tested Applications:

IF, IHC, WB, ELISA

Cited Applications:

IF, IHC, IP, WB

Species Specificity:

human, mouse, rat

Cited Species:

human, rat, mouse

Note-IHC: suggested antigen retrieval with TE buffer pH 9.0; (*) Alternatively, antigen retrieval may be performed with citrate buffer pH 6.0

Positive Controls:

WB: HepG2 cells, HeLa cells, rat spleen tissue, L02 cells, HEK-293 cells, NIH/3T3 cells

IHC: human liver cancer tissue,

IF: HeLa cells,

Background Information

G6PD (Glucose-6-phosphate 1-dehydrogenase) belongs to the glucose-6-phosphate dehydrogenase family. It is a housekeeping enzyme encoded in mammals by an X-linked gene. G6PD has important functions in intermediary metabolism because it catalyzes the first step in the pentose phosphate pathway and provides reductive potential in the form of NADPH. (PMID:7489710). This protein has 3 isoforms produced by alternative splicing.

Notable Publications

Author	Pubmed ID	Journal	Application
Hongshuo Zhang	33101047	Front Physiol	WB
Ramon Martinez	33109619	J Pharmacol Exp Ther	WB
Yang Zhang	33159852	Cell Metab	IHC, IF, IP

Storage

Storage:

Store at -20°C. Stable for one year after shipment.

Storage Buffer:

PBS with 0.02% sodium azide and 50% glycerol pH 7.3.

Aliquoting is unnecessary for -20°C storage

*** 20ul sizes contain 0.1% BSA

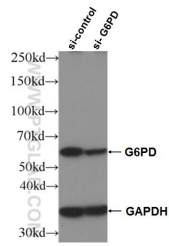
For technical support and original validation data for this product please contact:

T: 1 (888) 4PTGLAB (1-888-478-4522) (toll free in USA), or 1(312) 455-8498 (outside USA)

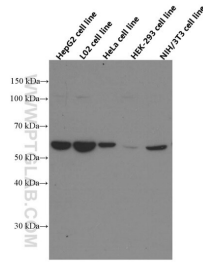
E: proteintech@ptglab.com
W: ptglab.com

This product is exclusively available under Proteintech Group brand and is not available to purchase from any other manufacturer.

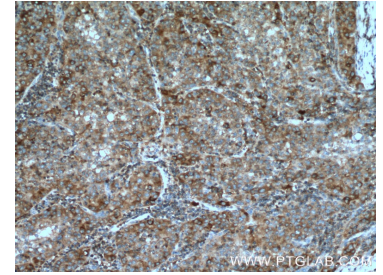
Selected Validation Data



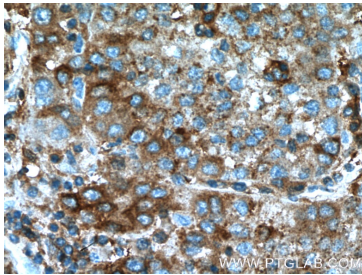
WB result of G6PD antibody (66373-1-Ig; 1:20000; incubated at room temperature for 1.5 hours) with sh-Control and sh-G6PD transfected HeLa cells.



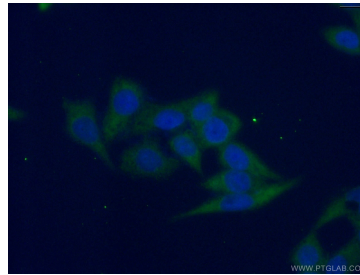
Several cell lines were subjected to SDS PAGE followed by western blot with 66373-1-Ig (G6PD Antibody) at dilution of 1:10000 incubated at room temperature for 1.5 hours.



Immunohistochemical analysis of paraffin-embedded human liver cancer tissue slide using 66373-1-Ig (G6PD Antibody) at dilution of 1:200 (under 10x lens). Heat mediated antigen retrieval with Tris-EDTA buffer (pH 9.0).



Immunohistochemical analysis of paraffin-embedded human liver cancer tissue slide using 66373-1-Ig (G6PD Antibody) at dilution of 1:200 (under 40x lens). Heat mediated antigen retrieval with Tris-EDTA buffer (pH 9.0).



Immunofluorescent analysis of (-20°C Ethanol) fixed HeLa cells using 66373-1-Ig (G6PD antibody) at dilution of 1:100 and Alexa Fluor 488-conjugated AffiniPure Goat Anti-Mouse IgG(H+L).