

For Research Use Only

G6PD Monoclonal antibody, PBS Only



Catalog Number: 66373-1-PBS

Featured Product

Basic Information

Catalog Number:

66373-1-PBS

Size:

100ug , Concentration: 1 mg/ml by Nanodrop;

Source:

Mouse

Isotype:

IgG2a

Immunogen Catalog Number:

AG21862

GenBank Accession Number:

BC000337

GeneID (NCBI):

2539

UNIPROT ID:

P11413

Full Name:

glucose-6-phosphate dehydrogenase

Calculated MW:

59 kDa

Observed MW:

60 kDa

Purification Method:

Protein A purification

CloneNo.:

2A7B12

Applications

Tested Applications:

WB, IF, IHC, ELISA

Species Specificity:

human, mouse, rat

Background Information

G6PD (Glucose-6-phosphate 1-dehydrogenase) belongs to the glucose-6-phosphate dehydrogenase family. It is a housekeeping enzyme encoded in mammals by an X-linked gene. G6PD has important functions in intermediary metabolism because it catalyzes the first step in the pentose phosphate pathway and provides reductive potential in the form of NADPH. (PMID:7489710). This protein has 3 isoforms produced by alternative splicing.

Storage

Storage:

Store at -80°C.

Storage Buffer:

PBS only

For technical support and original validation data for this product please contact:

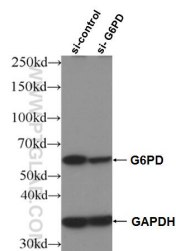
T: 1 (888) 4PTGLAB (1-888-478-4522) (toll free in USA), or 1(312) 455-8498 (outside USA)

E: proteintech@ptglab.com

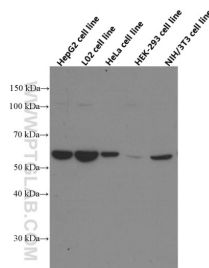
W: ptglab.com

This product is exclusively available under Proteintech Group brand and is not available to purchase from any other manufacturer.

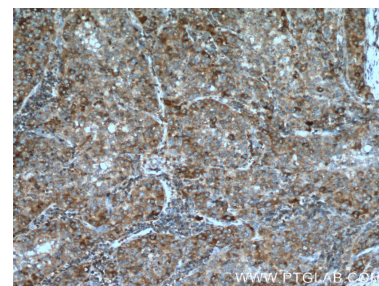
Selected Validation Data



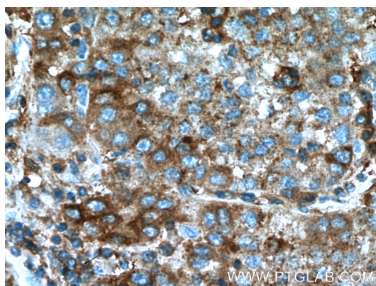
WB result of G6PD antibody (66373-1-Ig; 1:20000; incubated at room temperature for 1.5 hours) with sh-Control and sh-G6PD transfected HeLa cells. This data was developed using the same antibody clone with 66373-1-PBS in a different storage buffer formulation.



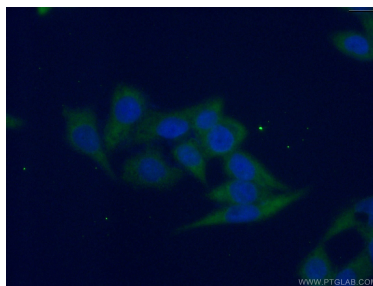
Several cell lines were subjected to SDS PAGE followed by western blot with 66373-1-Ig (G6PD Antibody) at dilution of 1:10000 incubated at room temperature for 1.5 hours. This data was developed using the same antibody clone with 66373-1-PBS in a different storage buffer formulation.



Immunohistochemical analysis of paraffin-embedded human liver cancer tissue slide using 66373-1-Ig (G6PD Antibody) at dilution of 1:200 (under 10x lens). Heat mediated antigen retrieval with Tris-EDTA buffer (pH 9.0). This data was developed using the same antibody clone with 66373-1-PBS in a different storage buffer formulation.



Immunohistochemical analysis of paraffin-embedded human liver cancer tissue slide using 66373-1-Ig (G6PD Antibody) at dilution of 1:200 (under 40x lens). Heat mediated antigen retrieval with Tris-EDTA buffer (pH 9.0). This data was developed using the same antibody clone with 66373-1-PBS in a different storage buffer formulation.



Immunofluorescent analysis of (-20°C Ethanol) fixed HeLa cells using 66373-1-Ig (G6PD antibody) at dilution of 1:100 and Alexa Fluor 488-conjugated AffiniPure Goat Anti-Mouse IgG(H+L). This data was developed using the same antibody clone with 66373-1-PBS in a different storage buffer formulation.