

TINP1 Monoclonal antibody

Catalog Number: 66374-1-Ig

Basic Information

Catalog Number: 66374-1-Ig	GenBank Accession Number: BC005288	Purification Method: Protein G purification
Size: 150ul , Concentration: 1500 ug/ml by Nanodrop and 1000 ug/ml by Bradford method using BSA as the standard;	GeneID (NCBI): 10412	CloneNo.: 1E3B11
Source: Mouse	UNIPROT ID: O95478	Recommended Dilutions: WB 1:1000-1:8000 IHC 1:50-1:500 IF/ICC 1:200-1:800
Isotype: IgG1	Full Name: TGF beta-inducible nuclear protein 1	
Immunogen Catalog Number: AG8822	Calculated MW: 260 aa, 30 kDa	
	Observed MW: 34 kDa	

Applications

Tested Applications: WB, IHC, IF/ICC, ELISA	Positive Controls:
Species Specificity: human	WB : L02 cells, HEK-293 cells, HepG2 cells
Note-IHC: suggested antigen retrieval with TE buffer pH 9.0; (*) Alternatively, antigen retrieval may be performed with citrate buffer pH 6.0	IHC : human breast cancer tissue,
	IF/ICC : HEK-293 cells,

Background Information

TINP1 (TGF beta inducible nuclear protein 1) was widely expressed in various cell lines. TINP1 overexpression significantly promoted tumor cell proliferation, which may be associated with the downregulation of p53 expression. Furthermore, TINP1 promoted a number of cell lines to the S phase of the cell cycle. TINP1 promotes cell proliferation and significantly reduces p53 and p21 expression.

Storage

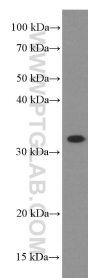
Storage:
Store at -20°C. Stable for one year after shipment.
Storage Buffer:
PBS with 0.02% sodium azide and 50% glycerol pH 7.3.
Aliquoting is unnecessary for -20°C storage

*** 20ul sizes contain 0.1% BSA

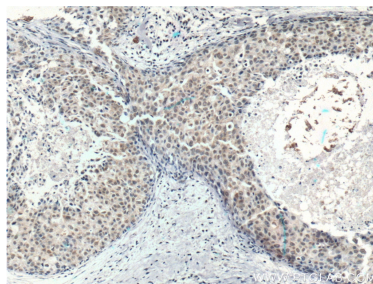
For technical support and original validation data for this product please contact:
T: 1 (888) 4PTGLAB (1-888-478-4522) (toll free in USA), or 1(312) 455-8498 (outside USA)
E: proteintech@ptglab.com
W: ptglab.com

This product is exclusively available under Proteintech Group brand and is not available to purchase from any other manufacturer.

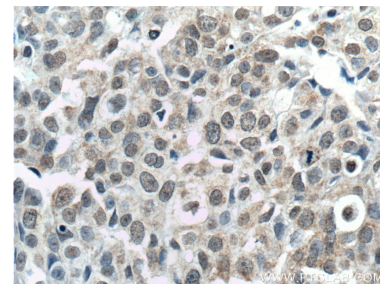
Selected Validation Data



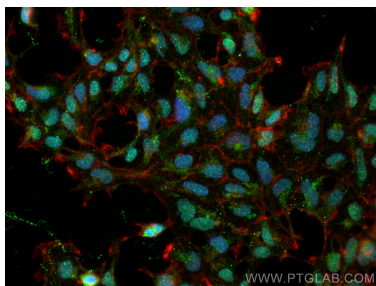
L02 cells were subjected to SDS PAGE followed by western blot with 66374-1-Ig (TINP1 Antibody) at dilution of 1:4000 incubated at room temperature for 1.5 hours.



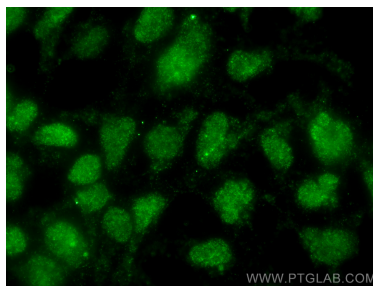
Immunohistochemical analysis of paraffin-embedded human breast cancer tissue slide using 66374-1-Ig (TINP1 Antibody) at dilution of 1:200 (under 10x lens). Heat mediated antigen retrieval with Tris-EDTA buffer (pH 9.0).



Immunohistochemical analysis of paraffin-embedded human breast cancer tissue slide using 66374-1-Ig (TINP1 Antibody) at dilution of 1:200 (under 40x lens). Heat mediated antigen retrieval with Tris-EDTA buffer (pH 9.0).



Immunofluorescent analysis of (4% PFA) fixed HEK-293 cells using TINP1 antibody (66374-1-Ig, Clone: 1E3B11) at dilution of 1:400 and Coralite®488-Conjugated AffiniPure Goat Anti-Mouse IgG(H+L).



Immunofluorescent analysis of (4% PFA) fixed HEK-293 cells using TINP1 antibody (66374-1-Ig, Clone: 1E3B11) at dilution of 1:400 and Coralite®488-Conjugated AffiniPure Goat Anti-Mouse IgG(H+L).