

For Research Use Only

Cardiac Troponin I Monoclonal antibody, PBS Only (Capture)

Catalog Number: 66376-2-PBS



Basic Information

Catalog Number: 66376-2-PBS	GenBank Accession Number: BC096165	Purification Method: Protein A purification
Size: 100ug , Concentration: 1 mg/ml by Nanodrop;	GeneID (NCBI): 7137	CloneNo.: 1C5E8
Source: Mouse	UNIPROT ID: P19429	
Isotype: IgG2b	Full Name: troponin I type 3 (cardiac)	
Immunogen Catalog Number: AG16758	Calculated MW: 210 aa, 24 kDa	

Applications

Tested Applications:
Cytometric bead array, Sandwich ELISA, Indirect ELISA, Sample test

Species Specificity:
human

Product Information

66376-2-PBS targets Cardiac Troponin I as part of a matched antibody pair:

MP51198-1: 66376-2-PBS capture and 66376-1-PBS detection (validated in Cytometric bead array, Sandwich ELISA)

Unconjugated mouse monoclonal antibody pair in PBS only (BSA and azide free) storage buffer at a concentration of 1 mg/mL, ready for conjugation.

This conjugation ready format makes antibodies ideal for use in many applications including: ELISAs, multiplex assays requiring matched pairs, mass cytometry, and multiplex imaging applications. Antibody use should be optimized by the end user for each application and assay.

Storage

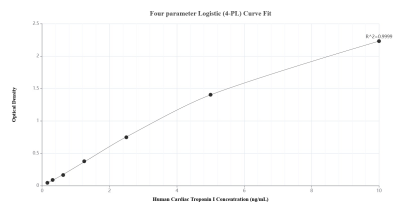
Storage:
Store at -80°C.

Storage Buffer:
PBS only, pH7.3

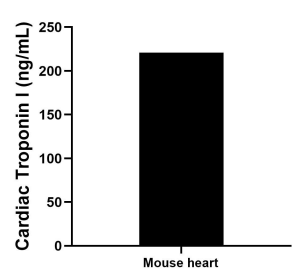
For technical support and original validation data for this product please contact:
T: 1 (888) 4PTGLAB (1-888-478-4522) (toll free in USA), or 1(312) 455-8498 (outside USA)
E: proteintech@ptglab.com
W: ptglab.com

This product is exclusively available under Proteintech Group brand and is not available to purchase from any other manufacturer.

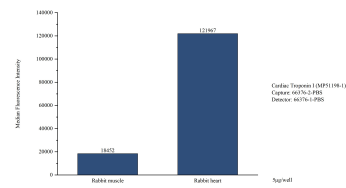
Selected Validation Data



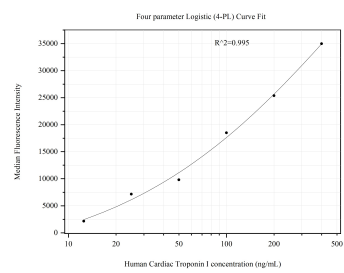
Sandwich ELISA standard curve of MP51198-1, Human Cardiac Troponin I Monoclonal Matched Antibody Pair - PBS only. 66376-2-PBS was coated to a plate as the capture antibody and incubated with serial dilutions of standard Ag16758. 66376-1-PBS was HRP conjugated as the detection antibody. Range: 0.156-10 ng/mL



The mean Cardiac Troponin I concentration was determined to be 220.78 ng/mL in mouse heart tissue extract based on a 7.10 mg/mL extract load.



Cytometric bead array in cell lysate using MP51198-1, Cardiac Troponin I Monoclonal Matched Antibody Pair, PBS Only. Capture antibody: 66376-2-PBS. Detection antibody: 66376-1-PBS. Cell lysate: Rabbit muscle, Rabbit heart.



Cytometric bead array standard curve of MP51198-1, Cardiac Troponin I Monoclonal Matched Antibody Pair, PBS Only. Capture antibody: 66376-2-PBS. Detection antibody: 66376-1-PBS. Standard:Ag16758. Range: 12.5-400 ng/mL