

For Research Use Only

# Occludin Monoclonal antibody, PBS Only



Catalog Number: 66378-1-PBS

Featured Product

## Basic Information

**Catalog Number:**

66378-1-PBS

**Size:**

100ug, Concentration: 1 mg/ml by Nanodrop;

**Source:**

Mouse

**Isotype:**

IgG1

**Immunogen Catalog Number:**

AG4057

**GenBank Accession Number:**

BC029886

**GeneID (NCBI):**

4950

**UNIPROT ID:**

Q16625

**Full Name:**

occludin

**Calculated MW:**

522 aa, 59 kDa

**Observed MW:**

59 kDa

**Purification Method:**

Protein G purification

**CloneNo.:**

1D3C4

## Applications

**Tested Applications:**

WB, IHC, Indirect ELISA

**Species Specificity:**

human, mouse, rat, pig

## Background Information

Occludin is an integral membrane protein located at the tight junction. It is a tetraspanin protein with four transmembrane domains, intracellular N and C termini and two extracellular loops. Occludin plays a role in the formation and regulation of the tight junction paracellular permeability barrier. Occludin can exist in different isoforms, owing to modifications at the posttranscriptional and posttranslational levels, the monomeric occludin migrates as 53-65 kDa on SDS-PAGE (PMID: 22083955; 19457074).

## Storage

**Storage:**

Store at -80°C.

**Storage Buffer:**

PBS Only

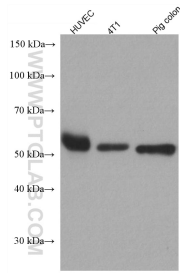
For technical support and original validation data for this product please contact:

T: 1 (888) 4PTGLAB (1-888-478-4522) (toll free in USA), or 1(312) 455-8498 (outside USA)

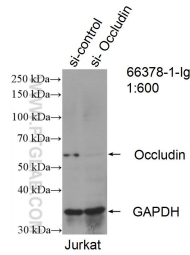
E: [proteintech@ptglab.com](mailto:proteintech@ptglab.com)  
W: [ptglab.com](http://ptglab.com)

This product is exclusively available under Proteintech Group brand and is not available to purchase from any other manufacturer.

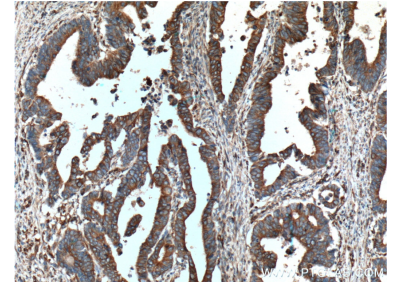
## Selected Validation Data



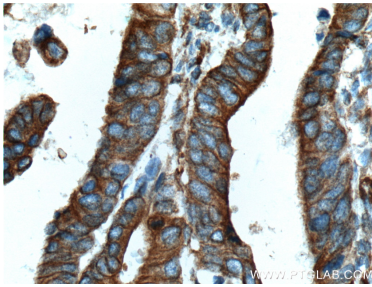
Various lysates were subjected to SDS PAGE followed by western blot with 66378-1-Ig (Occludin antibody) at dilution of 1:10000 incubated at room temperature for 1.5 hours. This data was developed using the same antibody clone with 66378-1-PBS in a different storage buffer formulation.



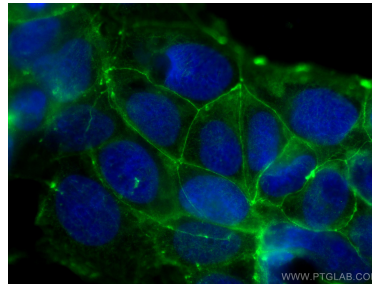
WB result of Occludin antibody (66378-1-Ig; 1:600; incubated at room temperature for 1.5 hours) with sh-Control and sh-Occludin transfected Jurkat cells. This data was developed using the same antibody clone with 66378-1-PBS in a different storage buffer formulation.



Immunohistochemical analysis of paraffin-embedded human colon cancer tissue slide using 66378-1-Ig (Occludin antibody) at dilution of 1:400 (under 10x lens. Heat mediated antigen retrieval with Tris-EDTA buffer (pH 9.0). This data was developed using the same antibody clone with 66378-1-PBS in a different storage buffer formulation.



Immunohistochemical analysis of paraffin-embedded human colon cancer tissue slide using 66378-1-Ig (Occludin antibody) at dilution of 1:400 (under 40x lens. Heat mediated antigen retrieval with Tris-EDTA buffer (pH 9.0). This data was developed using the same antibody clone with 66378-1-PBS in a different storage buffer formulation.



Immunofluorescent analysis of (-20°C Ethanol) fixed Caco-2 cells using Occludin antibody (66378-1-Ig, Clone: 1D3C4) at dilution of 1:1600 and Coralite® 488-Conjugated AffiniPure Goat Anti-Mouse IgG(H+L). This data was developed using the same antibody clone with 66378-1-PBS in a different storage buffer formulation.