

For Research Use Only

Osteoglycin Monoclonal antibody

Catalog Number: 66382-1-Ig



Basic Information

Catalog Number: 66382-1-Ig	GenBank Accession Number: BC037273	Purification Method: Protein G purification
Size: 150ul, Concentration: 1637 ug/ml by Nanodrop and 1000 ug/ml by Bradford method using BSA as the standard;	GeneID (NCBI): 4969	CloneNo.: 2A5F11
Source: Mouse	UNIPROT ID: P20774	Recommended Dilutions: WB 1:1000-1:6000 IHC 1:50-1:500
Isotype: IgG1	Full Name: osteoglycin	
Immunogen Catalog Number: AG3484	Calculated MW: 298 aa, 34 kDa	
	Observed MW: 30-40 kDa	

Applications

Tested Applications: WB, IHC, ELISA	Positive Controls:
Species Specificity: human, pig	WB : human artery tissue, pig artery tissue
Note-IHC: suggested antigen retrieval with TE buffer pH 9.0 ; (*) Alternatively, antigen retrieval may be performed with citrate buffer pH 6.0	IHC : human liver tissue, human lung tissue

Background Information

This gene encodes a member of the small leucine-rich proteoglycan (SLRP) family of proteins. The encoded protein induces ectopic bone formation in conjunction with transforming growth factor beta and may regulate osteoblast differentiation. High expression of the encoded protein may be associated with elevated heart left ventricular mass. Alternative splicing results in multiple transcript variants which forms proteins with different molecular weight.

Storage

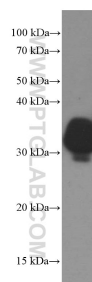
Storage:
Store at -20°C. Stable for one year after shipment.
Storage Buffer:
PBS with 0.02% sodium azide and 50% glycerol pH 7.3.
Aliquoting is unnecessary for -20°C storage

*** 20ul sizes contain 0.1% BSA

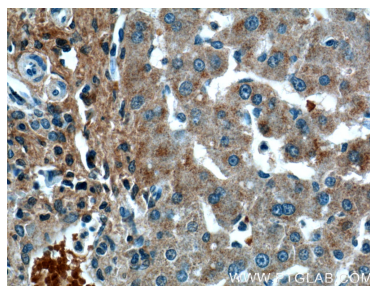
For technical support and original validation data for this product please contact:
T: 1 (888) 4PTGLAB (1-888-478-4522) (toll free in USA), or 1(312) 455-8498 (outside USA)
E: proteintech@ptglab.com
W: ptglab.com

This product is exclusively available under Proteintech Group brand and is not available to purchase from any other manufacturer.

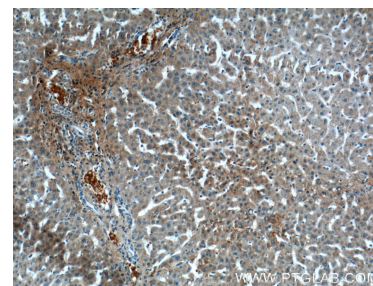
Selected Validation Data



Human artery tissue were subjected to SDS PAGE followed by western blot with 66382-1-Ig (Osteoglycin Antibody) at dilution of 1:3000 incubated at room temperature for 1.5 hours.



Immunohistochemical analysis of paraffin-embedded human liver tissue slide using 66382-1-Ig (Osteoglycin Antibody) at dilution of 1:200 (under 40x lens).



Immunohistochemical analysis of paraffin-embedded human liver tissue slide using 66382-1-Ig (Osteoglycin Antibody) at dilution of 1:200 (under 10x lens).