

For Research Use Only

# Osteoglycin Monoclonal antibody, PBS Only (Capture)

Catalog Number: 66382-1-PBS



## Basic Information

<b>Catalog Number:</b> 66382-1-PBS	<b>GenBank Accession Number:</b> BC037273	<b>Purification Method:</b> Protein G purification
<b>Size:</b> 100ug , Concentration: 1mg/ml by Nanodrop;	<b>GeneID (NCBI):</b> 4969	<b>CloneNo.:</b> 2A5F11
<b>Source:</b> Mouse	<b>UNIPROT ID:</b> P20774	
<b>Isotype:</b> IgG1	<b>Full Name:</b> osteoglycin	
<b>Immunogen Catalog Number:</b> AG3484	<b>Calculated MW:</b> 298 aa, 34 kDa	
	<b>Observed MW:</b> 30-40 kDa	

## Applications

**Tested Applications:**  
WB, IHC, Cytometric bead array, Sandwich ELISA, Indirect ELISA, Sample test

**Species Specificity:**  
human, pig

## Product Information

66382-1-PBS targets Osteoglycin as part of a matched antibody pair:

MP50723-1: 66382-1-PBS capture and 66382-2-PBS detection (validated in Cytometric bead array, Sandwich ELISA)

Unconjugated mouse monoclonal antibody pair in PBS only (BSA and azide free) storage buffer at a concentration of 1 mg/mL, ready for conjugation.

This conjugation ready format makes antibodies ideal for use in many applications including: ELISAs, multiplex assays requiring matched pairs, mass cytometry, and multiplex imaging applications. Antibody use should be optimized by the end user for each application and assay.

## Background Information

This gene encodes a member of the small leucine-rich proteoglycan (SLRP) family of proteins. The encoded protein induces ectopic bone formation in conjunction with transforming growth factor beta and may regulate osteoblast differentiation. High expression of the encoded protein may be associated with elevated heart left ventricular mass. Alternative splicing results in multiple transcript variants which forms proteins with different molecular weight.

## Storage

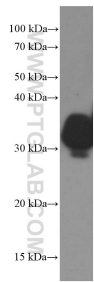
**Storage:**  
Store at -80°C.

**Storage Buffer:**  
PBS Only

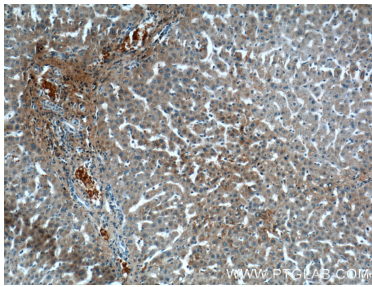
For technical support and original validation data for this product please contact:  
T: 1 (888) 4PTGLAB (1-888-478-4522) (toll free in USA), or 1(312) 455-8498 (outside USA)  
E: [proteintech@ptglab.com](mailto:proteintech@ptglab.com)  
W: [ptglab.com](http://ptglab.com)

This product is exclusively available under Proteintech Group brand and is not available to purchase from any other manufacturer.

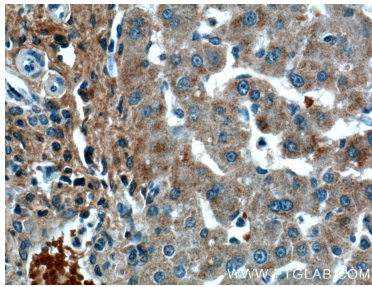
Selected Validation Data



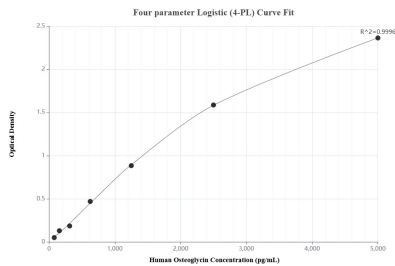
Human artery tissue were subjected to SDS PAGE followed by western blot with 66382-1-Ig (Osteoglycin Antibody) at dilution of 1:3000 incubated at room temperature for 1.5 hours. This data was developed using the same antibody clone with 66382-1-PBS in a different storage buffer formulation.



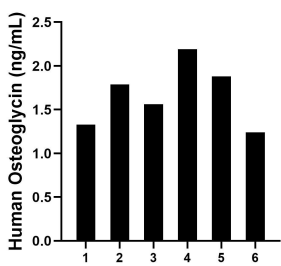
Immunohistochemical analysis of paraffin-embedded human liver tissue slide using 66382-1-Ig (Osteoglycin Antibody) at dilution of 1:200 (under 10x lens). This data was developed using the same antibody clone with 66382-1-PBS in a different storage buffer formulation.



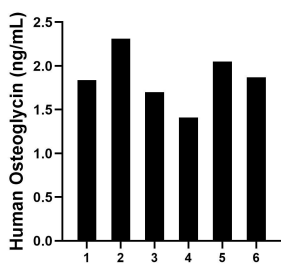
Immunohistochemical analysis of paraffin-embedded human liver tissue slide using 66382-1-Ig (Osteoglycin Antibody) at dilution of 1:200 (under 40x lens). This data was developed using the same antibody clone with 66382-1-PBS in a different storage buffer formulation.



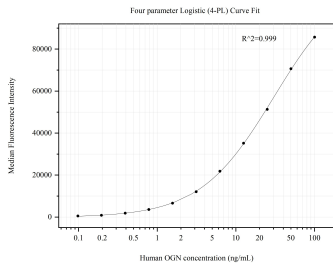
Sandwich ELISA standard curve of MP50723-1, Human Osteoglycin Monoclonal Matched Antibody Pair - PBS only. 66382-1-PBS was coated to a plate as the capture antibody and incubated with serial dilutions of standard Ag3484. 66382-2-PBS was HRP conjugated as the detection antibody. Range: 78.1-5000 pg/mL.



Plasma of six individual healthy human donors was measured. The Osteoglycin concentration of detected samples was determined to be 1.7 ng/mL with a range of 1.2-2.2 ng/mL.



Serum of six individual healthy human donors was measured. The Osteoglycin concentration of detected samples was determined to be 1.9 ng/mL with a range of 1.4-2.3 ng/mL.



Cytometric bead array standard curve of MP50723-1, OGN/Osteoglycin Monoclonal Matched Antibody Pair, PBS Only. Capture antibody: 66382-1-PBS. Detection antibody: 66382-2-PBS. Standard:Ag3484. Range: 0.098-100 ng/mL.