

For Research Use Only

# BMP2 Monoclonal antibody

Catalog Number: 66383-1-Ig **55 Publications**



## Basic Information

<b>Catalog Number:</b> 66383-1-Ig	<b>GenBank Accession Number:</b> BC069214	<b>Purification Method:</b> Protein A purification
<b>Size:</b> 150ul , Concentration: 1400 ug/ml by 650 Nanodrop and 1000 ug/ml by Bradford method using BSA as the standard;	<b>GeneID (NCBI):</b> UNIPROT ID: P12643	<b>CloneNo.:</b> 1C5C2
<b>Source:</b> Mouse	<b>Full Name:</b> bone morphogenetic protein 2	<b>Recommended Dilutions:</b> WB 1:1000-1:4000 IHC 1:50-1:500
<b>Isotype:</b> IgG2a	<b>Calculated MW:</b> 396 aa, 44 kDa	
<b>Immunogen Catalog Number:</b> AG13501	<b>Observed MW:</b> 45 kDa	

## Applications

<b>Tested Applications:</b> WB, IHC, ELISA	<b>Positive Controls:</b>
<b>Cited Applications:</b> WB, IHC, IF, Cell treatment	<b>WB :</b> pig bone marrow tissue, Caco-2 cells, HeLa cells, pig aorta tissue
<b>Species Specificity:</b> human, pig	<b>IHC :</b> human small intestine tissue,
<b>Cited Species:</b> human	
<b>Note-IHC: suggested antigen retrieval with TE buffer pH 9.0; (*) Alternatively, antigen retrieval may be performed with citrate buffer pH 6.0</b>	

## Background Information

Bone morphogenetic protein-2 (BMP-2) is a member of the transforming growth factor-beta (TGFB) superfamily. BMP2 is synthesized as a 60 kDa precursor that is processed in the secretory pathway to a small 18 kDa monomer; 2 monomers then associate to form the active 30 kDa homodimer, which binds to its receptor. There is also a 40-45 kDa form of BMP2, as an amino-terminal propeptide. BMP2 can induce bone formation and regeneration during early embryonic development. It is involved in the hedgehog pathway, TGF beta signaling pathway, and cytokine-cytokine receptor interaction. Two band isoforms of BMP2 are present (PMID: 35846837).

## Notable Publications

Author	Pubmed ID	Journal	Application
Hao Li	36123318	Phytother Res	WB
Xiangchang Cao	31493249	J Bone Miner Metab	WB,IHC
Xiaojing Chen	36356468	Biomater Adv	WB

## Storage

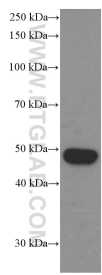
**Storage:**  
Store at -20°C. Stable for one year after shipment.  
**Storage Buffer:**  
PBS with 0.02% sodium azide and 50% glycerol pH 7.3.  
**Aliquoting is unnecessary for -20°C storage**

\*\*\* 20ul sizes contain 0.1% BSA

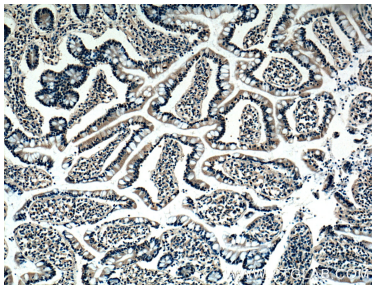
For technical support and original validation data for this product please contact:  
T: 1 (888) 4PTGLAB (1-888-478-4522) (toll free in USA), or 1(312) 455-8498 (outside USA)  
E: proteintech@ptglab.com  
W: ptglab.com

This product is exclusively available under Proteintech Group brand and is not available to purchase from any other manufacturer.

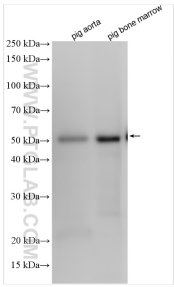
Selected Validation Data



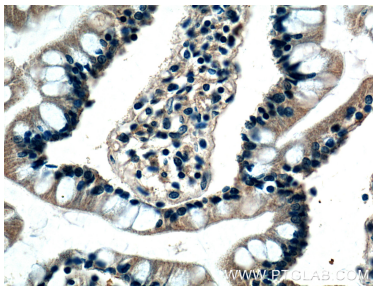
pig bone marrow tissue were subjected to SDS PAGE followed by western blot with 66383-1-Ig (BMP2 Antibody) at dilution of 1:2000 incubated at room temperature for 1.5 hours.



Immunohistochemical analysis of paraffin-embedded human small intestine tissue slide using 66383-1-Ig (BMP2 Antibody) at dilution of 1:200 (under 10x lens).



Various lysates were subjected to SDS PAGE followed by western blot with 66383-1-Ig (BMP2 antibody) at dilution of 1:600 incubated at room temperature for 1.5 hours.



Immunohistochemical analysis of paraffin-embedded human small intestine tissue slide using 66383-1-Ig (BMP2 Antibody) at dilution of 1:200 (under 40x lens).