

For Research Use Only

PADI2 Monoclonal antibody

Catalog Number: 66386-1-Ig

Featured Product

6 Publications



Basic Information

Catalog Number:

66386-1-Ig

GenBank Accession Number:

BC009701

Purification Method:

Protein A purification

Size:

150ul, Concentration: 1600 ug/ml by Nanodrop and 1000 ug/ml by Bradford method using BSA as the standard;

GeneID (NCBI):

11240

CloneNo.:

2D8C12

Source:

Mouse

UNIPROT ID:

Q9Y2J8

Recommended Dilutions:

WB 1:1000-1:6000

IHC 1:100-1:400

IF-P 1:50-1:500

Isotype:

IgG2b

Full Name:

peptidyl arginine deiminase, type II

Calculated MW:

665 aa, 75 kDa

Immunogen Catalog Number:

AG17612

Observed MW:

75 kDa

Applications

Tested Applications:

WB, IHC, IF-P, ELISA

Cited Applications:

WB, IHC, IF

Species Specificity:

human, mouse, rat, rabbit, pig

Cited Species:

human, mouse, rat

Note-IHC: suggested antigen retrieval with TE buffer pH 9.0; (*) Alternatively, antigen retrieval may be performed with citrate buffer pH 6.0

Positive Controls:

WB : human skeletal muscle tissue, HeLa cells, MCF-7 cells, pig brain tissue, rat brain tissue, mouse brain tissue, rat skeletal muscle tissue, mouse skeletal muscle tissue

IHC : human breast cancer tissue,

IF-P : human breast cancer tissue,

Background Information

PADI2, also named as KIAA0994, PDI2, PAD-H19 and PAD2(Peptidylarginine deiminase II), belongs to the protein arginine deiminase family. It catalyzes the deimination of arginine residues of proteins. PADI2 may play a regulatory role in the expression of lactation related genes via histone citrullination during diestrus (PMID:20668670). PADI2 has two isoforms with MW 75 kDa and 49 kDa.

Notable Publications

Author	Pubmed ID	Journal	Application
Alerie G de la Fuente	32434922	Mol Cell Proteomics	WB
Hiroyuki Katayama	34112737	J Immunother Cancer	IHC
Hyun-Jung Kim	35218410	Cell Mol Life Sci	WB,IF

Storage

Storage:

Store at -20°C. Stable for one year after shipment.

Storage Buffer:

PBS with 0.02% sodium azide and 50% glycerol pH 7.3.

Aliquoting is unnecessary for -20°C storage

*** 20ul sizes contain 0.1% BSA

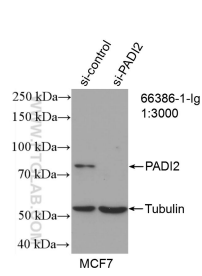
For technical support and original validation data for this product please contact:

T: 1 (888) 4PTGLAB (1-888-478-4522) (toll free in USA), or 1(312) 455-8498 (outside USA)

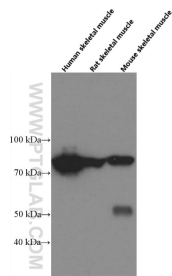
E: proteintech@ptglab.com
W: ptglab.com

This product is exclusively available under Proteintech Group brand and is not available to purchase from any other manufacturer.

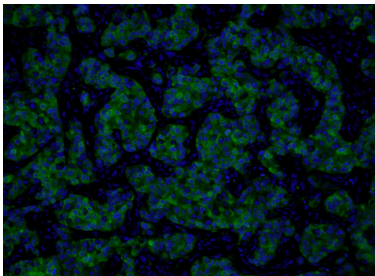
Selected Validation Data



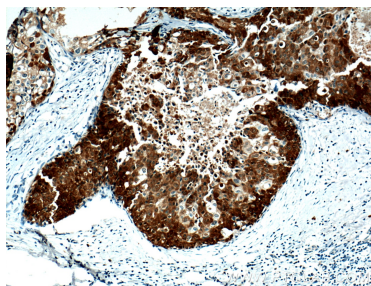
WB result of PADI2 antibody (66386-1-Ig; 1:3000; incubated at room temperature for 1.5 hours) with sh-Control and sh-PADI2 transfected MCF-7 cells.



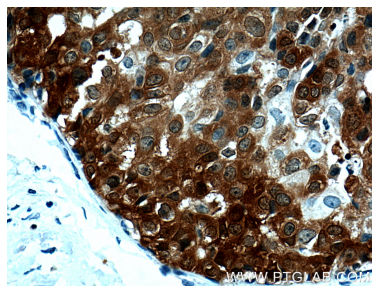
human skeletal muscle tissue, rat skeletal muscle tissue, mouse skeletal muscle tissue were subjected to SDS PAGE followed by western blot with 66386-1-Ig (PADI2 Antibody) at dilution of 1:3000 incubated at room temperature for 1.5 hours.



Immunofluorescent analysis of (4% PFA) fixed human breast cancer tissue using 66386-1-Ig (PADI2 antibody) at dilution of 1:100 and Alexa Fluor 488-Conjugated Goat Anti-Mouse IgG(H+L).



Immunohistochemical analysis of paraffin-embedded human breast cancer tissue slide using 66386-1-Ig (PADI2 Antibody) at dilution of 1:200 (under 10x lens). Heat mediated antigen retrieval with Tris-EDTA buffer (pH 9.0).



Immunohistochemical analysis of paraffin-embedded human breast cancer tissue slide using 66386-1-Ig (PADI2 Antibody) at dilution of 1:200 (under 40x lens). Heat mediated antigen retrieval with Tris-EDTA buffer (pH 9.0).