

For Research Use Only

PADI2 Monoclonal antibody

Catalog Number: 66386-1-Ig

Featured Product

5 Publications



Basic Information

Catalog Number: 66386-1-Ig	GenBank Accession Number: BC009701	Purification Method: Protein A purification
Size: 150ul, Concentration: 1600 µg/ml by Nanodrop and 1000 µg/ml by Bradford method using BSA as the standard;	GeneID (NCBI): 11240	CloneNo.: 2D8C12
Source: Mouse	Full Name: peptidyl arginine deiminase, type II	Recommended Dilutions: WB 1:1000-1:6000 IHC 1:100-1:400 IF 1:50-1:500
Isotype: IgG2b	Calculated MW: 665 aa, 75 kDa	
Immunogen Catalog Number: AG17612	Observed MW: 75 kDa	

Applications

Tested Applications:

IF, IHC, WB, ELISA

Cited Applications:

IF, IHC, WB

Species Specificity:

human, mouse, rat, rabbit, pig

Cited Species:

human, rat, mouse

Note-IHC: suggested antigen retrieval with TE buffer pH 9.0; (*) Alternatively, antigen retrieval may be performed with citrate buffer pH 6.0

Positive Controls:

WB: human skeletal muscle tissue, HeLa cells, MCF-7 cells, pig brain tissue, rat brain tissue, mouse brain tissue, rat skeletal muscle tissue, mouse skeletal muscle tissue

IHC: human breast cancer tissue,

IF: human breast cancer tissue,

Background Information

PADI2, also named as KIAA0994, PDI2, PAD-H19 and PAD2 (Peptidylarginine deiminase II), belongs to the protein arginine deiminase family. It catalyzes the deimination of arginine residues of proteins. PADI2 may play a regulatory role in the expression of lactation related genes via histone citrullination during diestrus (PMID:20668670). PADI2 has two isoforms with MW 75 kDa and 49 kDa.

Notable Publications

Author	Pubmed ID	Journal	Application
Alerie G de la Fuente	32434922	Mol Cell Proteomics	WB
Hiroyuki Katayama	34112737	J Immunother Cancer	IHC
Hyun-Jung Kim	35218410	Cell Mol Life Sci	WB, IF

Storage

Storage:

Store at -20°C. Stable for one year after shipment.

Storage Buffer:

PBS with 0.02% sodium azide and 50% glycerol pH 7.3.

Aliquoting is unnecessary for -20°C storage

*** 20ul sizes contain 0.1% BSA

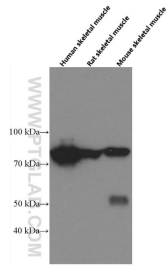
For technical support and original validation data for this product please contact:

T: 1 (888) 4PTGLAB (1-888-478-4522) (toll free in USA), or 1(312) 455-8498 (outside USA)

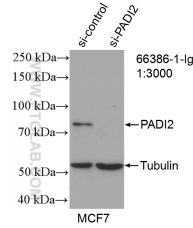
E: proteintech@ptglab.com
W: ptglab.com

This product is exclusively available under Proteintech Group brand and is not available to purchase from any other manufacturer.

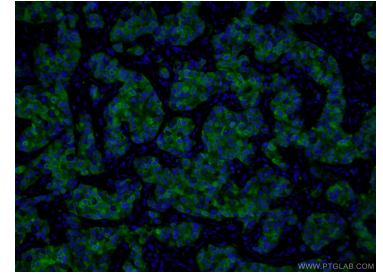
Selected Validation Data



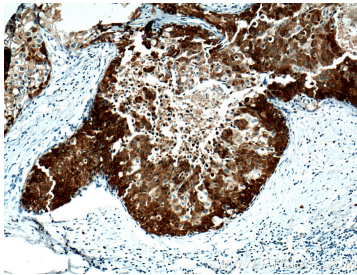
human skeletal muscle tissue, rat skeletal muscle tissue, mouse skeletal muscle tissue were subjected to SDS PAGE followed by western blot with 66386-1-Ig (PADI2 Antibody) at dilution of 1:3000 incubated at room temperature for 1.5 hours.



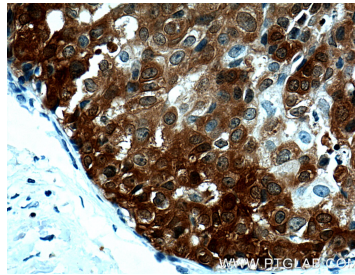
WB result of PADI2 antibody (66386-1-Ig; 1:3000; incubated at room temperature for 1.5 hours) with sh-Control and sh-PADI2 transfected MCF-7 cells.



Immunofluorescent analysis of (4% PFA) fixed human breast cancer tissue using 66386-1-Ig (PADI2 antibody) at dilution of 1:100 and Alexa Fluor 488-Conjugated AffiniPure Goat Anti-Mouse IgG(H+L).



Immunohistochemical analysis of paraffin-embedded human breast cancer tissue slide using 66386-1-Ig (PADI2 Antibody) at dilution of 1:200 (under 10x lens). Heat mediated antigen retrieval with Tris-EDTA buffer (pH 9.0).



Immunohistochemical analysis of paraffin-embedded human breast cancer tissue slide using 66386-1-Ig (PADI2 Antibody) at dilution of 1:200 (under 40x lens). Heat mediated antigen retrieval with Tris-EDTA buffer (pH 9.0).