

For Research Use Only

FKBPL Monoclonal antibody

Catalog Number: 66389-1-Ig 1 Publications



Basic Information

Catalog Number: 66389-1-Ig	GenBank Accession Number: BC004168	Purification Method: Protein A purification
Size: 150ul , Concentration: 1500 ug/ml by Nanodrop and 1000 ug/ml by Bradford method using BSA as the standard;	GeneID (NCBI): 63943	CloneNo.: 2H10B10
Source: Mouse	UNIPROT ID: Q9UIM3	Recommended Dilutions: WB 1:2000-1:10000 IHC 1:100-1:400 IF/ICC 1:400-1:1600
Isotype: IgG1	Full Name: FK506 binding protein like	
Immunogen Catalog Number: AG0112	Calculated MW: 349 aa, 38 kDa	
	Observed MW: 42 kDa	

Applications

Tested Applications: WB, IHC, IF/ICC, FC (Intra), ELISA	Positive Controls: WB : MCF-10A cells, HeLa cells, HEK-293 cells, Jurkat cells, Raji cells, HSC-T6 cells, NIH/3T3 cells, 4T1 cells, Calu-3 cells, Caco-2 cells, HepG2 cells, C6 cells IHC : human breast cancer tissue, human testis tissue IF/ICC : HeLa cells,
Cited Applications: WB	
Species Specificity: human, mouse, rat	
Cited Species: human	
Note-IHC: suggested antigen retrieval with TE buffer pH 9.0; (*) Alternatively, antigen retrieval may be performed with citrate buffer pH 6.0	

Background Information

FKBPL, also named as DIR1, NG7 and WISp39, has similarity to the immunophilin protein family, which plays a role in immunoregulation and basic cellular processes involving protein folding and trafficking. FKBPL levels may be a prognostic indicator and determinant of response to endocrine therapy(PMID:20103631, 15664193) .It can be detected the band between 38 kDa and 48 kDa by western blot.

Notable Publications

Author	Pubmed ID	Journal	Application
Sahar Masoumeh Ghorbanpour	36652019	Cell Mol Life Sci	WB

Storage

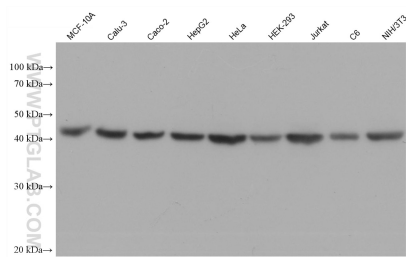
Storage:
Store at -20°C. Stable for one year after shipment.
Storage Buffer:
PBS with 0.02% sodium azide and 50% glycerol, pH7.3
Aliquoting is unnecessary for -20°C storage

*** 20ul sizes contain 0.1% BSA

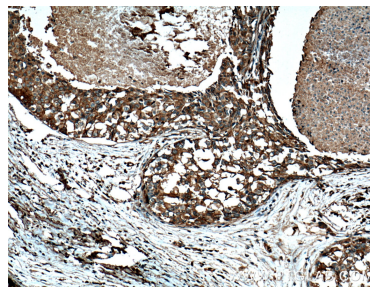
For technical support and original validation data for this product please contact:
T: 1 (888) 4PTGLAB (1-888-478-4522) (toll free in USA), or 1(312) 455-8498 (outside USA)
E: proteintech@ptglab.com
W: ptglab.com

This product is exclusively available under Proteintech Group brand and is not available to purchase from any other manufacturer.

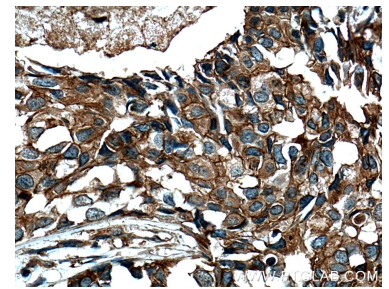
Selected Validation Data



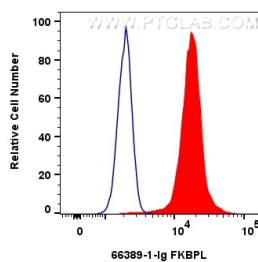
Various lysates were subjected to SDS PAGE followed by western blot with 66389-1-Ig (FKBPL antibody) at dilution of 1:5000 incubated at room temperature for 1.5 hours.



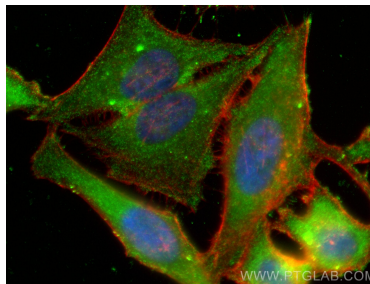
Immunohistochemical analysis of paraffin-embedded human breast cancer tissue slide using 66389-1-Ig (FKBPL Antibody) at dilution of 1:200 (under 10x lens). Heat mediated antigen retrieval with Tris-EDTA buffer (pH 9.0).



Immunohistochemical analysis of paraffin-embedded human breast cancer tissue slide using 66389-1-Ig (FKBPL Antibody) at dilution of 1:200 (under 40x lens). Heat mediated antigen retrieval with Tris-EDTA buffer (pH 9.0).



1x10⁶ HeLa cells were intracellularly stained with 0.4 ug FKBPL Monoclonal antibody (66389-1-Ig, Clone:2H10B10) and CoraLite®488-Conjugated AffiniPure Goat Anti-Mouse IgG(H+L) (SA00013-1) (red), or 0.4 ug Mouse IgG1 Isotype Control (MOPC-21) (65124-1-Ig, Clone: MOPC-21) (blue). Cells were fixed with 4% PFA and permeabilized with Flow Cytometry Perm Buffer (PF00011-C).



Immunofluorescent analysis of (-20°C Ethanol) fixed HeLa cells using FKBPL antibody (66389-1-Ig, Clone: 2H10B10) at dilution of 1:800 and CoraLite®488-Conjugated Goat Anti-Mouse IgG(H+L) (SA00013-1), CL594-Phalloidin (red).